

Questions

MathonGo

Q1 - 25 July - Shift 1

The photochemical smog does not generally contain :

- (A) NO (B) NO₂
(C) SO₂ (D) HCHO

Space for your notes:

Q2 - 26 July - Shift 2

Match List I with List II

List I Pollutant	List II Source
A. Microorganisms	I. Strip mining
B. Plant nutrients	II. Domestic sewage
C. Toxic heavy metals	III. Chemical fertilizer
D. Sediment	IV. Chemical factory

Space for your notes:

Choose the correct answer from the options given

below :

- (A) A-II, B-III, C-IV, D-I
(B) A-II, B-I, C-IV, D-III
(C) A-I, B-IV, C-II, D-III
(D) A-I, B-IV, C-III, D-II

Q3 - 27 July - Shift 1

#MathBoleTohMathonGo

Questions

MathonGo

Match List I with List II

List I Pollutant	List II Disease /sickness
A. Sulphate (>500 ppm)	I. Methemoglobinemia
B. Nitrate (>50 ppm)	II. Brown mottling of teeth
C. Lead (> 50 ppb)	III. Laxative effect
D. Fluoride (>2 ppm)	IV. Kidney damage

Space for your notes:

Choose the correct answer from the options given below:

- (A) A-IV, B -I, C-II, D-III
- (B) A-III, B -I, C-IV, D-II
- (C) A-II, B -IV, C-I, D-III
- (D) A-II, B -IV, C-III, D-I

Q4 - 27 July - Shift 2

#MathBoleTohMathonGo

Questions

MathonGo

Given below are two statements:

Statement I : The non bio-degradable fly ash and slag from steel industry can be used by cement industry.

Statement II : The fuel obtained from plastic waste is lead free.

In the light of the above statements, choose the **most appropriate** answer from the options given below:

- (A) Both **Statement I** and **Statement II** are correct
- (B) Both **Statement I** and **Statement II** are incorrect
- (C) **Statement I** is correct but **Statement II** is incorrect
- (D) **Statement I** is incorrect but **Statement II** is correct

Space for your notes:

Q5 - 28 July - Shift 1

Given below are two statements :

Statement I : In polluted water values of both dissolved oxygen and BOD are very low.

Statement II : Eutrophication results in decrease in the amount of dissolved oxygen.

In the light of the above statements, choose the most appropriate answer from the options given below :

- (A) Both Statement I and Statement II are true
- (B) Both Statement I and Statement II are false
- (C) Statement I is true but Statement II is false
- (D) Statement I is false but Statement II is true

Space for your notes:

#MathBoleTohMathonGo

Questions

MathonGo

Q6 - 29 July - Shift 1

Which among the following pairs has only herbicides ?

Space for your notes:

- (A) Aldrin and Dieldrin
- (B) Sodium chlorate and Aldrin
- (C) Sodium arsenate and Dieldrin
- (D) Sodium chlorate and sodium arsenite.

Q7 - 29 July - Shift 1

Which of the following compounds is an example of hypnotic drug ?

Space for your notes:

- (A) Seldane
- (B) Amytal
- (C) Aspartame
- (D) Prontosil

#MathBoleTohMathonGo

Questions

MathonGo

// mathongo // mathongo // mathongo // mathongo // mathongo // mathongo

Answer Key

// mathongo // mathongo // mathongo // mathongo // mathongo // mathongo

Q1 (C)**Q2 (A)****Q3 (B)****Q4 (A)**

// mathongo // mathongo // mathongo // mathongo // mathongo // mathongo

Q5 (D)**Q6 (D)****Q7 (B)**

// mathongo // mathongo // mathongo // mathongo // mathongo // mathongo

// mathongo // mathongo // mathongo // mathongo // mathongo // mathongo

// mathongo // mathongo // mathongo // mathongo // mathongo // mathongo

// mathongo // mathongo // mathongo // mathongo // mathongo // mathongo

// mathongo // mathongo // mathongo // mathongo // mathongo // mathongo

// mathongo // mathongo // mathongo // mathongo // mathongo // mathongo

// mathongo // mathongo // mathongo // mathongo // mathongo // mathongo

// mathongo // mathongo // mathongo // mathongo // mathongo // mathongo

// mathongo // mathongo // mathongo // mathongo // mathongo // mathongo

// mathongo // mathongo // mathongo // mathongo // mathongo // mathongo

// mathongo // mathongo // mathongo // mathongo // mathongo // mathongo

// mathongo // mathongo // mathongo // mathongo // mathongo // mathongo

// mathongo // mathongo // mathongo // mathongo // mathongo // mathongo

// mathongo // mathongo // mathongo // mathongo // mathongo // mathongo

// mathongo // mathongo // mathongo // mathongo // mathongo // mathongo

// mathongo // mathongo // mathongo // mathongo // mathongo // mathongo

// mathongo // mathongo // mathongo // mathongo // mathongo // mathongo

// mathongo // mathongo // mathongo // mathongo // mathongo // mathongo

#MathBoleTohMathonGo

Q1 (C)

Factual

Q2 (A)

List I Pollutant	List II Source
A. Microorganisms	Domestic sewage
B. Plant nutrients	Chemical fertilizer
C. Toxic heavy metals	Chemical factory
D. Sediment	Strip mining

Q3 (B)

A. Sulphate (>500 ppm) - Causes Laxative effect that leads to dehydration

B. Nitrate (>50 ppm) - Causes Methemoglobinemia, skin appears blue

C. Lead (> 50 ppb) – It damage kidney and RBC

D. Fluoride (>2 ppm) – It Causes Brown mottling of teeth

Q4 (A)

#MathBoleTohMathonGo

(I) Fly ash and slag from steel industry are utilised by cement industry.

(II) Fuel obtained from plastic waste has high octane rating. It contains no lead and it is known as green fuel.

Both statement (I) & (II) are correct.

Q5 (D)

Since eutrophication is result of excessive growth of weed in water bodies, which consume dissolved oxygen of water bodies.

∴ Eutrophication decreases amount of dissolved oxygen in water bodies.

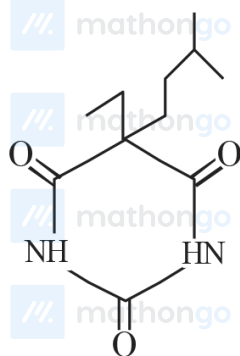
Polluted water has low value of dissolved oxygen, but high value of BOD (Biological oxygen demand), since chemical and organic matter requires dissolved oxygen to get decompose.

Q6 (D)

Both sodium chlorate and sodium arsenite behave as herbicide.

Q7 (B)

Amytal is hypnotic drug used to treat sleeping disorder.



Amytal