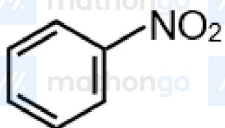


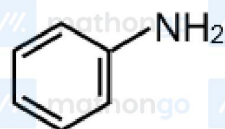
Q1 JEE Main 2020 - 8 January (Evening)

Kjeldahl's method cannot be used to estimate nitrogen for which of the following compounds?

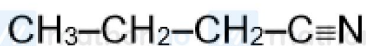
(A)



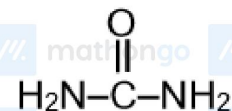
(B)



(C)

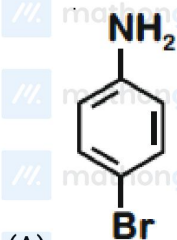


(D)



Q2 JEE Main 2020 - 2 September (Morning)

In Carius method of estimation of halogen, 0.172g of an organic compound showed presence of 0.08g of bromine. Which of these is the correct structure of the compound?



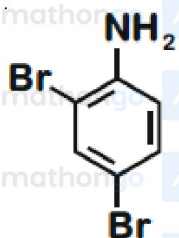
(A)

Purification Of Organic Compounds

JEE Main 2020 Chapterwise

Questions with Answer Keys

Chemistry



- (B) $\text{H}_3\text{C} - \text{Br}$
(C) $\text{H}_3\text{C} - \text{Br}$
(D) $\text{H}_3\text{C} - \text{CH}_2 - \text{Br}$

Q3 JEE Main 2020 - 3 September (Morning)

Glycerol is separated in soap industries by

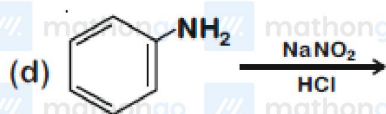
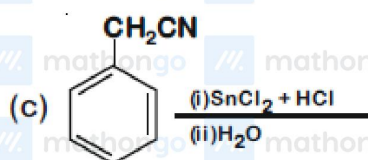
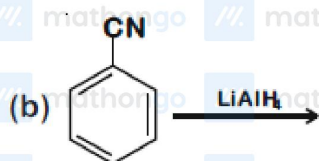
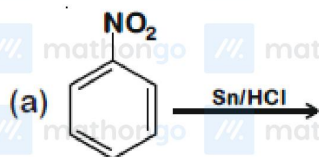
- (A) Fractional distillation
(B) Differential extraction
(C) Distillation under reduced pressure
(D) Steam distillation

Q4 JEE Main 2020 - 3 September (Morning)

#MathBoleTohMathonGo

www.mathongo.com

The Kjeldahl method of Nitrogen estimation fails for which of the following reaction products?



(A) (a), (c) and (d)

(B) (a) and (d)

(C) (c) and (d)

(D) (b) and (c)

Q5 JEE Main 2020 - 6 September (Morning)

In an estimation of bromine by Carius method, 1.6g of an organic compound gave 1.88g of AgBr. The mass percentage of bromine in the compound is (Atomic mass, $Ag = 108$, $Br = 80g\ mol^{-1}$)

Q6 JEE Main 2020 - 6 September (Evening)

Match the following:

Test/Method	Reagent
(i) Lucas Test	(a) $C_6H_5SO_2Cl$ / aq. KOH
(ii) Dumas method	(b) HNO_3 / $AgNO_3$
(iii) Kjeldahl's method	(c) CuO/CO_2
(iv) Hinsberg test	(d) Conc. HCl and $ZnCl_2$
	(e) H_2SO_4

(A) (i) – (b), (ii) – (d), (iii) – (e), (iv) – (a)

(B) (i) – (d), (ii) – (c), (iii) – (e), (iv) – (a)

(C) (i) – (b), (ii) – (a), (iii) – (c), (iv) – (d)

(D) (i) – (d), (ii) – (c), (iii) – (b), (iv) – (e)

Q7 JEE Main 2020 - 7 January (Evening)

A chromatography column, packed with silica gel as stationary phase, was used to separate a mixture of compounds consisting of (A) benzanilide (B) aniline and (C) acetophenone. When the column is eluted with a mixture of solvents, hexane : ethyl acetate (20 : 80), the sequence of obtained compounds is :

(A) (B), (C) and (A)

(B) (A), (B) and (C)

(C) (B), (A) and (C)

(D) (C), (A) and (B)

Answer Key

Q1 (A)

Q2 (A)

Q3 (C)

Q4 (C)

Q5 (50)

Q6 (B)

Q7 (D)