

Master Math for JEE Main & JEE Advanced

Crash Courses designed specifically for students who want to improve their percentile & score in upcoming JEE Main & JEE Advanced exam. **Tap on the banners to know more.**

For JEE Main 2020 April



JEE MAIN APRIL CRASH COURSE
TARGET 99+ PERCENTILE IN MATH

REGISTER NOW
Limited Seats!



For JEE Advanced 2020



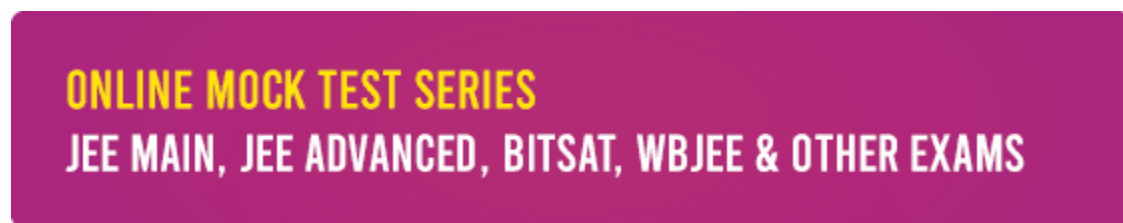
JEE ADVANCED CRASH COURSE
TARGET YOUR DREAM IIT

REGISTER NOW
Limited Seats!



Online Mock Test Series

Take online mock tests for a solid practice for your upcoming JEE Main, JEE Advanced, BITSAT & other competitive exams. All the subjects are included. **Tap on the banner.**



ONLINE MOCK TEST SERIES
JEE MAIN, JEE ADVANCED, BITSAT, WBEE & OTHER EXAMS

Free Study Materials

Download PDF of study materials like notes, formula sheets, practice questions, previous year question papers from our website. Visit www.mathongo.com now!

JEE Mains 2020 Jan Chapter wise Question Bank

Solutions and Colligative Properties

Q1

Vapour pressure of pure CS_2 and CH_3COCH_3 are 512 mm of Hg and 312 mm of Hg respectively. Total vapour pressure of mixture is 600 mm of Hg then find incorrect statement:

(1) $\left[\begin{array}{l} A \text{ --- } A \\ B \text{ --- } B \end{array} \right] > A \text{ --- } B$

- (2) Does not obey Raoult's law
- (3) Endothermic solution
- (4) after adding 100 ml of each, then net volume is less than 200 ml

7th Jan Morning

Sol

- (4)
Above mixture of liquids show positive deviation from Raoult's Law

Q2

There are two beakers (I) having pure volatile solvent and (II) having volatile solvent and non-volatile solute. If both beakers are placed together in a closed container then:

- (1) Volume of solvent beaker will decrease and solution beaker will increase
- (2) Volume of solvent beaker will increase and solution beaker will also increase
- (3) Volume of solvent beaker will decrease and solution beaker will also decrease
- (4) Volume of solvent beaker will increase and solution beaker will decrease

7th Jan Evening

Sol

- (1)
There will be lowering in vapour pressure in second beaker.

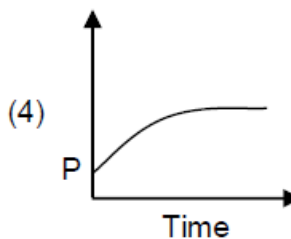
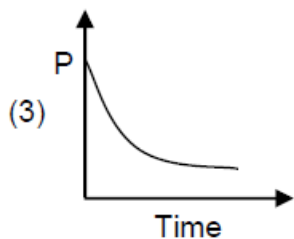
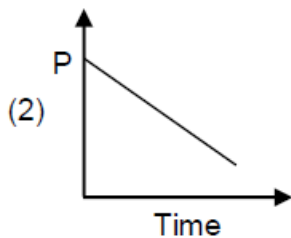
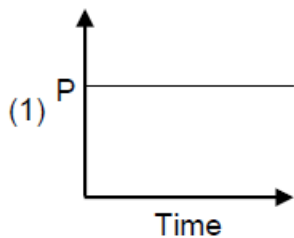
Q3

Solutions and Colligative Properties

JEE Mains 2020 Jan Chapter wise Question Bank

In a box a mixture containing H_2 , O_2 and CO along with charcoal is present then variation of pressure with the time will be as follows :

एक बॉक्स में चारकोल के साथ H_2 , O_2 तथा CO युक्त एक मिश्रण उपस्थित है तो समय के साथ दाब का अन्तर निम्न प्रकार होगा—



9th Jan Evening

Sol

(3)
Theory based.



mathongo

Master Math for JEE Main & JEE Advanced

Crash Courses designed specifically for students who want to improve their percentile & score in upcoming JEE Main & JEE Advanced exam. **Tap on the banners to know more.**

For JEE Main 2020 April



JEE MAIN APRIL CRASH COURSE
TARGET 99+ PERCENTILE IN MATH

REGISTER NOW
Limited Seats!



For JEE Advanced 2020



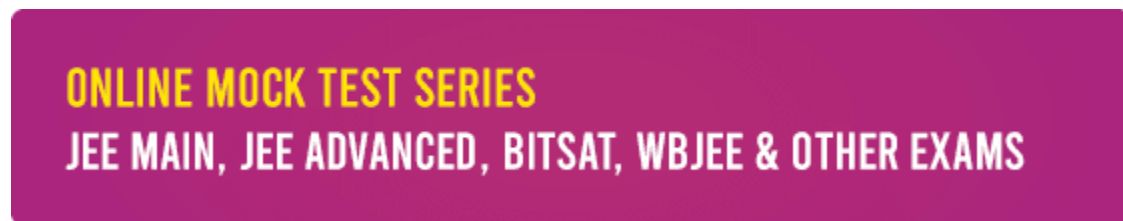
JEE ADVANCED CRASH COURSE
TARGET YOUR DREAM IIT

REGISTER NOW
Limited Seats!



Online Mock Test Series

Take online mock tests for a solid practice for your upcoming JEE Main, JEE Advanced, BITSAT & other competitive exams. All the subjects are included. **Tap on the banner.**



ONLINE MOCK TEST SERIES
JEE MAIN, JEE ADVANCED, BITSAT, WBEE & OTHER EXAMS

Free Study Materials

Download PDF of study materials like notes, formula sheets, practice questions, previous year question papers from our website. Visit www.mathongo.com now!