

**Half Yearly Examination - 2024**

**Class - IX**

**Time : 2 Hrs.**

**PHYSICS**

**M.M. : 80**

Note : You will not be allowed to write during the first fifteen minutes. This time is to be spent in reading the question paper. The time given at the head of this paper is the time allowed for writing the answers. The intended marks are given in bracket [ ].

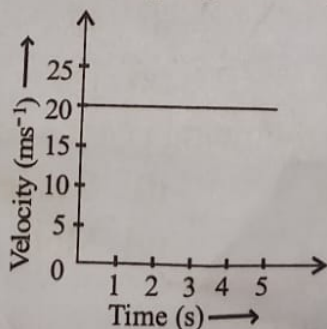
This question paper is divided into two sections. Section 'A' is compulsory. Attempt any four questions in Section 'B'.

**Section - A [40 Marks]**

**Attempt all questions from this section.**

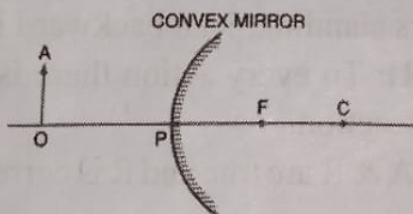
1. Choose the correct answers to the questions from the given options. (Do not copy the questions, write the correct answers only) [1×15=15]
- a) The laws of reflection hold good for
- i) Plane mirror only
  - ii) Concave mirror only
  - iii) Convex mirror only
  - iv) All mirrors irrespective of their shape.
- b) When a sound wave travels through air, the region of minimum density is called
- i) Compression
  - ii) Rarefaction
  - iii) Neutral zones
  - iv) Antinodes
- c) The gravitational force between two objects is  $F$ . If the masses of both the objects are doubled and the distance between them is also doubled, then the gravitational force would become :
- i)  $F/4$
  - ii)  $4F$
  - iii)  $F$
  - iv)  $16F$
- d) Which of the following is not a fundamental unit?
- i) Kilogram
  - ii) Candela
  - iii) Kilolitre
  - iv) Mole

- e) The numerical ratio of displacement to distance for a moving object is :
- Always less than 1
  - Always equal to 1
  - Always more than 1
  - Equal or less than 1
- f) Two balls of masses  $4m$  and  $8m$  are in motion with velocities  $2v$  and  $v$  respectively. The ratio of their momentum would be :
- 2:1
  - 1:2
  - 1:1
  - 1:4
- g) For a ray incident normally on a plane mirror, the angle of incidence is :
- $90^\circ$
  - $45^\circ$
  - $30^\circ$
  - $0^\circ$
- h) The number of oscillations made in one second is called :
- Amplitude
  - Time period
  - Frequency
  - None of these
- i) The properties of ultrasound that make it useful are :
- High power and high speed
  - High power and good directivity
  - High frequency and high speed
  - High speed and bending around the objects.
- j) The type of mirror used as a shaving mirror in daily life is :
- Plane mirror
  - Convex mirror
  - Concave mirror
  - Parabolic mirror
- k) The velocity-time graph given adjacent shows :



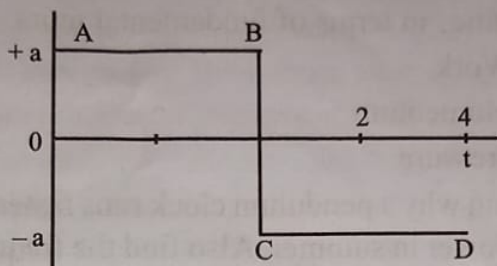
- i) Uniform acceleration
  - ii) Average speed
  - iii) Uniform velocity
  - iv) All of the above
- l) Velocity of sound in moist air is
- i) Same as that in dry air
  - ii) More than that in dry air
  - iii) Less than that in dry air
  - iv) None of the above
- m) Ratio between angle of incidence and angle of reflection is :
- i) 1 : 1
  - ii) 1 : 2
  - iii) 1 : 4
  - iv) 2 : 1
- n) When the screw of a micrometer is given 10 complete rotations, the screw moves forward by 5mm on the linear scale. The pitch of micrometer screw gauge is :
- i) 5mm
  - ii) 2mm
  - iii) 0.5mm
  - iv) 0.5cm
- o) **Assertion(A):** When a bus starts suddenly, the passengers standing, lean backward in the bus.  
**Reason(R):** To every action there is an equal and opposite reaction.
- i) Both A & R are true and R is correct explanation of A
  - ii) Both A & R are true but R is not correct explanation of A
  - iii) A is true but R is false.
  - iv) Both A & R are false.
2. a) **Complete the following by choosing the correct answers from the bracket :** [1×6=6]
- i) Working of rocket is based on Newton's \_\_\_\_\_ law of motion. [first/second/third]
  - ii) An incident ray passing through the \_\_\_\_\_ of a concave mirror retraces its path after reflection from the mirror. [focus/center of curvature/pole]

- iii) The distance between two consecutive compressions in a wave is called its \_\_\_\_\_.  
[wavelength/amplitude/frequency]
- iv) To measure the depth of a beaker \_\_\_\_\_ of a vernier callipers is used. [internal jaws/external jaws/tail]
- v) \_\_\_\_\_ is the vector quantity. [Temperature/Current/Acceleration]
- vi) For two plane mirrors placed parallel to each other, the number of images formed is \_\_\_\_\_.  
[5/0/infinite]
- b) A particle moves 3m north, then 4m east and finally 6m south. Calculate the magnitude of displacement. [2]
- c) A loaded truck A and a car B both moving with velocity of 60 kmph are supposed to be stopped. Which of them will require larger force to stop & why? [2]
3. a) Complete the ray diagram of image of object AO placed in front of a convex mirror. [2]



- b) A transverse wave of frequency 500Hz, is produced in a string, moves a distance of 4m in 0.02s. Calculate :[2]
- the velocity of the wave
  - wavelength of the transverse wave.
- c) What will happen to the weight of the body if it travel from city X situated at equator to city Y situated at pole. Justify your answer. [2]
- d) Calculate the ratio of time periods of pendulum A of length 50cm and pendulum B of length 2m. [2]

- e) A graph is plotted between velocity-time as shown below. State what does AB and CD represent? [2]



- f) Why a brittle material like glass break when it falls on a hard floor but remain undamaged when falls on carpet. [2]
- g) A ball which is thrown vertically upwards reaches the roof of a house 100m high. At the same time another similar ball is dropped freely from the roof of the house. At which height will the balls pass each other? ( $g=10\text{ms}^{-2}$ ) [3]

### Section - B [40 Marks]

*Attempt any FOUR questions from this section.*

4. a) When a concave mirror is placed facing the sun, the sun's ray converge to a point 10 cm from mirror. Now, an erect, 2cm long pin is placed 15cm away on the principal axis of the mirror. If you want to get the image of the pin on a card, where would you place the card? What would be the nature and height of the image? [3]
- b) What is lateral inversion? Draw a neat ray diagram to show the of letter 'P' when placed in front of plane mirror. [3]
- c) Give reason for the following : [4]
- i) When a gun is fired from a distance, an observer sees the flash of firing a gun a bit earlier and listens the sound of fire later.

ii) Sound travel faster during summer than during winter.

✓ 5. a) Derive the SI unit of the following physical quantities in terms of fundamental units. [3]

i) Work

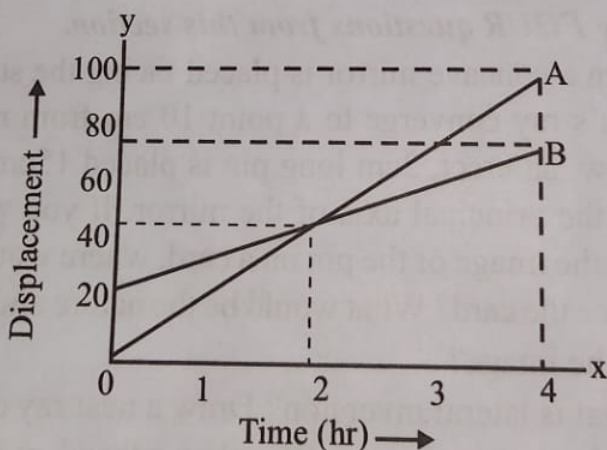
ii) Momentum

iii) Pressure

b) Explain why a pendulum clock runs faster in winter and slower in summer. Also find the frequency of a second's pendulum. [3]

c) The mass of the earth is  $6 \times 10^{24}$  kg and that of the moon is  $7.4 \times 10^{22}$  kg. If the distance between the earth and the moon is  $3.84 \times 10^5$  km, calculate the force exerted by the earth on the moon. ( $G = 6.67 \times 10^{-11} \text{ Nm}^2\text{kg}^{-2}$ ) [4]

3. 6. a) The diagram below shows the sketch of displacement-time graph of the motion of two moving bodies A and B. Find : [3]



- The distance by which B was ahead of A.
- Velocity of body A
- Time in which A catches B.

b) Name the law responsible for the following observations : [3]

i) When a striker hits the bottom of the pile of coins placed at the centre of a carom board, only the lowest coin is removed.

ii) When people jump from boat near the shore, boat moves in opposite direction.

iii) An athlete lands on a sand or foam after taking a high jump.

c) The pitch of screw gauge is 1mm and number of divisions on head scale is 100. While measuring the diameter of a thin wire, main scale read 3mm and 53<sup>rd</sup> division of circular scale coincides with base line of main scale. Find the least count and diameter of the wire. [4]

7. a) Give three differences between transverse wave and longitudinal wave. [3]

b) An observer sitting in line of two tanks, watches the flashes of the two tanks firing at each other at the same time, but he hears the sounds of two shots 2s and 3.5s after seeing the flashes. If distance between the two tanks is 510m, find the speed of sound. [3]

c) Name the kind of mirror used to obtain : [4]

i) real and enlarged image.

ii) virtual and enlarge image

iii) virtual and same size image

iv) real and diminished image.

8. a) State two characteristics of non-contact force. Also give an example. [3]

b) A cricketer brought a ball of mass 200g moving with velocity  $60\text{ms}^{-1}$  to rest in 0.06s. Find the : [3]

i) change in momentum of the ball

ii) average force applied by the cricketer.

c) Draw a diagram to show the use of concave mirror as a reflector in headlight of automobiles. Also state the at what position the bulb should be placed? [4]

9. a) Define zero error of vernier callipers? Give mathematical expression for finding the two types of zero errors. [3]

b) Can you hear the sound produced due to vibration of a second's pendulum? Give reason for your answer. Also state the category in which this frequency lie. [3]

c) A body starts from rest and accelerates uniformly for 30s to a speed 72kmph. It then moves with a uniform velocity and is finally brought to rest by travelling further 50m with a constant retardation. If the total distance travelled is 950m, find : [4]

i) the total time taken

ii) the acceleration

iii) the retardation.

□□□



vi) Two sides of a triangle are of lengths 4 cm and 10 cm. If the length of the third side is 'a' cm, then,

- a)  $a > 5$                       b)  $6 \leq a \leq 12$   
c)  $a < 6$                       d)  $6 \leq a \leq 14$

vii) If  $x - 2y = 11$  and  $xy = 8$ , then the value of  $x^3 - 8y^3$  is

- a) 1860                      b) 1600  
c) 2000                      d) 1859

viii) Two numbers are in the ratio 2 : 3. If 9 is added to each number, they will be in the ratio 3 : 4. What is the product of two numbers?

- a) 360                      b) 480  
c) 486                      d) 512

ix) Which of the following is not a criterion for congruency of triangle?

- a) SAS                      b) ASA  
c) SSA                      d) SSS

x) A girl walks 200m towards east and then 150m towards North. The distance of the girl from the starting point is :

- a) 350 m                      b) 250 m  
c) 300 m                      d) 225 m

xi) One diagonal and perimeter of a rhombus are 24 cm and 52 cm respectively. The other diagonal is

- a) 13 cm                      b) 12 cm  
c) 10 cm                      d) 15 cm

xii) A wire is in the form of a circle of radius 42 cm. If it is bent into a square, then what is the side of the square?

- a) 66 cm                      b) 42 cm  
c) 36 cm                      d) 33 cm

xiii) The distance between the points  $(6, -2)$  and  $(2, -6)$  is

- a)  $4\sqrt{5}$  units      b) 4 units  
 c) 6 units      d)  $4\sqrt{2}$

xiv) If  $M(x, y)$  is equidistant from point  $A(-3, 2)$  and  $B(2, -3)$ , then

- a)  $2x = y$       b)  $x = 2y$   
 c)  $x = y$       d)  $x = -y$

xv) If  $x + y = 5$  and  $x - y = 3$  value of  $x^2 + y^2$  is :

- a) 15      b) 16  
 c) 8      d) 25

2. a) Rationalise the denominator of  $\frac{1}{\sqrt{2} + \sqrt{3} + \sqrt{5}}$  [4]

b) Find the value of  $x^3 - \frac{1}{x^3}$  if  $x + \frac{1}{x} = \sqrt{29}$  [4]

c) ABCD is a parallelogram. The sides AB, AD and produced to E, F so that  $AB = BE$  and  $AD = DF$ .

Prove that -

[4]

i)  $\triangle BEC \cong \triangle DCF$

ii)  $CF = CE$

3. a) On what sum of money will the difference between the simple interest and compound interest for 2 years at 5% per annum be equal to ₹ 50. [4]

b) ABCD is a kite having  $AB = AD$  and  $BC = CD$ . Prove that the figure formed by joining the mid-points of the sides, in order is a rectangle. [4]

c) Factorise the following: [5]

i)  $(2a + b)^3 + (a + 2b)^3$

ii)  $x^2 + \frac{1}{x^2} - 11$

**Section-B [40 Marks]**

*Attempt any four questions from this Section.*

4. a) Solve the following pair of equations by the method of cross-multiplication. [3]

$$11x + 15y + 23 = 0; \quad 7x - 2y - 20 = 0$$

- b) How many times will the wheel of a car rotate in a journey of 88 km if it is known that the diameter of the wheel is 56cm? [3]

- c) In  $\triangle ABC$ ,  $\angle B = 90^\circ$  and D is the mid-point of BC. Prove that : [4]

i)  $AC^2 = AD^2 + 3CD^2$

ii)  $BC^2 = 4(AD^2 - AB^2)$

- ✓ 5. a) Find the value of p for which the points  $(-1, 3)$ ,  $(2, p)$  and  $(5, -1)$  are collinear. [3]

- b) The base of an isosceles triangle measures 80 cm and its area is  $360 \text{ cm}^2$ . Find the perimeter of the triangle. [3]

- c) Using a scale of  $1 \text{ cm} = 1 \text{ unit}$  for both the axes, draw the graph of the following equations.  $6y = 5x + 10$ ,  $y = 5x - 15$ . Find the coordinates of point where two lines intersect each other. [4]

6. a) The inner circumference of a circular track is 440m. The track is 14m wide. Find the diameter of the outer circle of the track. [3]

- b) PQRS is a convex quadrilateral. Prove that  $PQ + QR + RS > PS$  [3]

- c) A sailor goes 8 km downstream in 40 minutes and returns in 1 hour. Determine the speed of the sailor in still water and the speed of the current. [4]

7. a) Find the value of  $a$  and  $b$  if  $\frac{5+2\sqrt{3}}{7+4\sqrt{3}} = a + b\sqrt{3}$  [3]

b) D, E and F are respectively the mid-points of the sides BC, CA and AB of an equilateral triangle ABC. Prove that  $\triangle DEF$  is also an equilateral triangle. [3]

c) The parallel sides of a trapezium are 7.5 cm, 3.9 cm; and the other sides are each 2.6 cm. Find its area. [4]

8. a) If  $x^3 + y^3 + z^3 = 3xyz$  and  $x + y + z = 0$ , find the value of  $\frac{(x+y)^2}{xy} + \frac{(y+z)^2}{yz} + \frac{(z+x)^2}{zx}$ . [3]

b) If  $a^4 + b^4 = a^2 b^2$ , show that  $a^6 + b^6 = 0$  [3]

c) AD is an altitude of  $\triangle ABC$  and AD is 12 cm, BD = 9 cm and DC = 16 cm long respectively. Prove that the angle BAC is a right angle. [4]

9. a) The present price of a scooter is ₹ 7290. If its value decreases every year by 10%, then what was its value 3 years ago? [3]

b) Factorise :  $8a^3 - b^3 + 12a^2b - 6ab^2$  [3]

c) In a quadrilateral ABCD, the diagonals AC, BD intersect at right angles. Prove that : [4]

$$AB^2 + CD^2 = BC^2 + DA^2$$

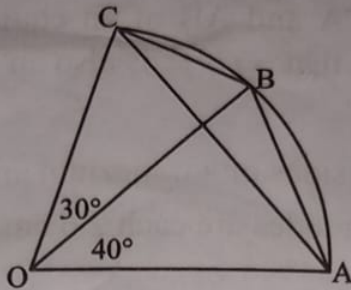
10. a) Solve for  $x$  and  $y$ ; [3]

$$3 - (x - 5) = y + 2, \quad 2(x + y) = 4 - 3y$$

b) Show that  $\sqrt{5}$  is not a rational number by contradiction method. [3]

- c) In the given figure, O is the centre of the circular arc ABC. Find the angles of  $\triangle ABC$ .

[4]



□□□

**Note :**

- You will not be allowed to write during the first 15 minutes. This time is to be spent in reading the question paper.
- The paper has four sections. Section A is compulsory. All questions in section A must be answered. You must attempt one question from each of the sections B, C and D and one other question from any section of your choice.

**SECTION - A**

(Attempt all questions from this section)

1. Read the following questions and choose the most appropriate response from the choices given below. [16]
- i) Which quality of the common man is reflected in this scene?
- a) Admiration for Caesar
  - b) Fickleness
  - c) Hatred for Caesar
  - d) Fear of Caesar
- ii) What did the cobbler say to show that he is a master craftsman?
- a) He is a surgeon of old shoes
  - b) He mends soles
  - c) Every shoe wearing gentleman has worn his handiwork
  - d) He needed more work
- iii) What reason did Brutus give for being unfriendly towards Cassius?
- a) Triumphant return of Caesar
  - b) Fear of losing his freedom
  - c) His own conflicting emotions
  - d) None of the above
- iv) According to Brutus, which trait of Antony does he lack?
- a) Bravery
  - b) Liveliness
  - c) Tactfulness
  - d) None of the above

- v) For whom does Casca say that "he sits high in all the people's hearts?"
- a) Antony
  - b) Brutus
  - c) Caesar
  - d) Cassius
- vi) How would Brutus' joining the conspirators change their crime?
- a) It will give them moral support
  - b) It will make their group strong
  - c) It will convert their crime into a noble act
  - d) None of the above
- vii) The journey of the Night Mail symbolises, which of the following?
- a) Journey of life
  - b) Journey of a woman
  - c) Journey of postal services
  - d) None of the above
- viii) How is the Night Mail different from other trains?
- a) She is always late
  - b) She carries both letters and passengers
  - c) She makes a lot of noise
  - d) She doesn't have human passengers
- ix) How does Skimbleshanks establish his absolute control?
- a) By speaking to the station master
  - b) By a regular patrol
  - c) By following the guard
  - d) By talking to the passengers
- x) When Skimbleshanks is aboard
- a) No one could play pranks
  - b) All the passengers are tense
  - c) By following the guard
  - d) By talking to the passengers
- xi) What is the mood of the poem 'Remember I Remember'?
- a) Cheerful
  - b) Regretful
  - c) Nostalgic
  - d) Jolly

- xii) The poet wishes to go back to his childhood days because
- His present is painful
  - He was happy when he was a child
  - He did not worry when he was a child
  - All of the above
- xiii) Who among the following was a good storyteller?
- Nidhu Babu
  - Bhairav Chakravarty
  - Bonku Babu
  - Sripati Majumdar
- xiv) Who was Mr Sowerberry?
- A cook in the work house
  - A coffin maker for the work house
  - A friend of Mr. Bumble
  - A member of the board
- xv) What made Alan Trevor give Hughie, a permanent entry to his studio?
- His indifference towards the family
  - His pauperism
  - Hughie's sprits and kindness
  - His bright ideas
- xvi) According to Trevor where is an artist's heart?
- In his chest
  - In his stomach
  - In his work
  - In his mind

### SECTION - B

*(Answer one or more question from this section)*

#### DRAMA (Julius Caesar)

2. Read the extract given below and answer the questions that follow:

**Marullus :**

And when you saw his chariot but appear  
 Have you not made an universal shout,  
 That Tiber trembled underneath her banks,  
 To hear the replication of your sounds,  
 Made in her concave shores?

And do you now put on your best attire?

- i) Whose chariot was seen? When? What did "you" do on seeing the chariot?

- ii) What is meant by "universal shout"? State in your own words what happened as a consequence of the shout. [3]
- iii) What is meant by "Pompey's blood"? Who comes now in triumph? [3]
- iv) How do the people now prepare for the triumphal entry of the person? [3]
- v) What does the speaker want to achieve by his speech given in the extract. [4]
3. **Read the extract given below and answer the questions that follow:**

**Brutus**

Cassius, Be not deceived if I have veiled my look,  
Merely upon myself. Vexed I am of late with passion of  
some difference,

Conceptions only proper to myself,  
Which give some soil perhaps to my behaviour

- i) Where are Brutus and Cassius at this time? What does Cassius observe about Brutus? [3]
- ii) Why does Brutus not go along with Caesar to the games? With whom does Brutus contrast himself? How? [3]
- iii) What does Cassius accuse Brutus of? What reply does Brutus give? [3]
- iv) Give the meaning of : [3]
- a) You bear too stubborn and too strange a hand.
- b) Vexed I am/of late with passion of some difference.
- v) What, do you think, is the motive of Cassius in professing friendship to Brutus. What type of person is Cassius? [4]

**SECTION - C**

*(Answer one or more questions from this section)*

**PROSE - SHORT STORIES**

4. **Read the extract given below and answer the questions that follow:**

That particular evening, Bonku Babu was the first to

spot the strange light. Then he called Nidhu Babu and showed it to him. However, when he arrived at the meeting, he found that Nidhu Babu has coolly claimed full credit for Being the first person to see it.

- [3] i) Why did Nidhu Babu say that he was the first person to spot the strange light? What does it show about his character? [3]
- [3] ii) What does Bonku's silence show about his character? [3]
- [4] iii) Later, why did they change the topic of satellites? [3]
- iv) What did Ramkanai say about human achievement? [3]
- v) What is the prospect of a rocket landing in the village? Why? What was Bonku Babu's view on this? [4]

5. **Read the extract given below and answer the questions that follow:**

Oliver was a prisoner in that cold, dark room for a whole week. Every morning, he was taken outside to wash and Mr. Bumble beat him with a stick.

- i) Who shut Oliver in the cold dark room? Where was Oliver imprisoned for a whole week and why? [3]
- ii) What forced Oliver to make that offence? Why was he chosen to commit that offence? [3]
- iii) Was it proper for Mr. Bumble to beat Oliver in front of everyone? Why did he do so? [3]
- iv) What are your feelings for Mr. Bumble and the workhouse culture of Victorian Times? [3]
- v) Why could Oliver not sleep at night? What does it show about the condition of children in Victorian England? [4]

**SECTION - D**

*(Answer one or more questions from this section)*

**POETRY**

6. **Read the extract given below and answer the questions that follow:**

Asleep in granite Aberdeen  
They continue their dreams

But shall wake soon and hope for letters  
 And none will hear the postman's knock  
 Without a quickening of the heart.

- i) What were people doing while the Night Mail was travelling through different cities? [3]
  - ii) What sort of dreams do these people have? What are these dreams symbolic of? [3]
  - iii) What would happen to their heart beat on hearing the postman's knock? Why [3]
  - iv) If the postman does not bring them letters, what would be the feeling of the people? [3]
  - v) Explain how does the Night Mail help to promote human relations? [4]
7. **Read the extract given below and answer the questions that follow:**

I remember, I remember  
 The fir trees dark and high  
 I used to think their slender tops  
 Were close against the sky  
 It was a childish ignorance  
 But now 'tis little joy  
 To know I am farther off from heaven  
 Then when I was a boy.

- i) What did the poet think about fir trees as a child? [3]
- ii) Identify any two literary devices used in this extract. [3]
- iii) What does he refer to as "Childish ignorance"? What is the 'Joy' referred to in this extract? [3]
- iv) Why did the poet feel closer to heaven earlier? Why does he feel farther off from the heaven now? [3]
- v) The last three lines suggest that the poet has lost his youthful joy and optimism. Do you agree? Elaborate with reference to the poem? [4]

**Half Yearly Examination - 2024**

**Class - IX**

**Time : 2 Hrs.**

**HISTORY & CIVICS**

**M.M. : 80**

**Note :** You will not be allowed to write during the first 15 minutes. This time is to be spent in reading the question paper.

- The time given at the head of this paper is the time allowed for writing the answers.
- Attempt all questions from Part I are (Compulsory). A total of five questions are to be attempted from Part II, two out of three questions from Section A and three out of five questions from Section B.
- The intended marks for questions or parts of questions are given in brackets [ ].

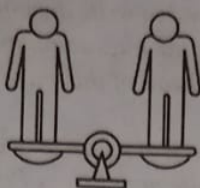
**PART-I [30 Marks]**

*Attempt all questions from this Part*

**1. Choose the correct answers to the questions from the given options:** **[16]**

- a) Arrange the following events in chronological order.
- I) The Constitution was adopted and passed.
  - II) It took almost three years to pass the Constitution.
  - III) The Constitution came into force with effect.
  - IV) The draft of the Constitution underwent three readings.
- i) I, II, III, IV                      ii) IV, III, II, I  
iii) IV, I, II, III                      iv) III, II, I, IV
- b) Identify the odd one out of the following :
- i) Article - 14 - Right against exploitation
  - ii) Article - 16 - Equality of opportunity
  - iii) Article - 17 - Abolition of untouchability
  - iv) Article - 19 - Right to freedom of speech and expression
- c) Directive Principles: Not justiciable: Fundamental Rights : \_\_\_\_\_
- i) Mandatory                      ii) Enforceable by courts
  - iii) Obligatory                      iv) Compulsory

- d) Which Fundamental Right has been highlighted in the picture given below:



- i) Right to Freedom of Religion.  
 ii) Right to Equality before law.  
 iii) Right to Freedom of Speech and Expression.  
 iv) Right against Exploitation.
- e) The picture below shows one of the Vedas which is also termed as 'the first testament of mankind'. Identify it.



- i) Atharva Veda      ii) Sama Veda  
 iii) Rig Veda      iv) Yajur Veda
- f) The first tirthankara of Jainism was
- i) Mahavira      ii) Rishabhadev  
 iii) Gautama      iv) Parshvanath
- g) Read the statements (A) and (B) and select the correct relationship between (A) and (B).
- A) Bali was a religious tribute in the Mauryan Period.  
 B) Bhaga was levied on agricultural produce
- i) (B) contradicts (A)  
 ii) (B) is the reason for (A)  
 iii) (A) is true but (B) is false  
 iv) (A) and (B) are independent of each other
- h) It was the capital of Chera Kingdom
- i) Vanji      ii) Uraiyyur  
 iii) Madurai      iv) Ramanathapuram

- i) Which Gupta ruler was given the title of Sakari?
- i) Chandragupta I      ii) Chandragupta II  
 iii) Samudragupta      iv) Skandgupta
- j) He established the Chola rule in Tamil Nadu
- i) Rajendra Chola      ii) Rajaraja I  
 iii) Parantaka      iv) Vijayalaya
- k) Read the two statements (A) and (B) and select the correct relationships between (A) and (B)
- A) About 2000 Harappan seals have been discovered.  
 B) The seals were mainly used for trading purposes.
- i) (B) contradicts (A)  
 ii) (B) is the reason for (A)  
 iii) (A) is true but (B) is false  
 iv) (A) and (B) are independent of each other
- l) It was the most important occupation of the Later Vedic Period
- i) Cattle rearing      ii) Agriculture  
 iii) Traded      iv) Domestication of animals
- m) Chandragupta Maurya established a vast empire overthrowing
- i) Guptas and Chalukyas  
 ii) Guptas and Greek Satraps  
 iii) Rashtrakutas and Nandas  
 iv) Nandas and Greeks
- n) According to Fa Hien, which of the following city was a major city in the Gupta Period
- i) Rajagriha      ii) Vaishali  
 iii) Mathura      iv) Pataliputra

- o) Which of the following territories did not form a part of the Chola empire?
- i) Malayasia                      ii) Mysore  
iii) Sri Lanka                      iv) Odisha
- p) Buddhist texts were mainly composed in
- i) Pali                                  ii) Sanskrit  
iii) Prakrit                          iv) All of the above

**2. Answer the following questions:**

[14]

- i) How are Fundamental Rights justiciable?
- ii) In which part of the Constitution are the Directive Principles incorporated?
- iii) State two features of the internal trade in the Indus Valley Civilisation?
- iv) What is known as Bhagwad Gita?
- v) Mention two causes for the spread of Jainism.
- vi) What are Megaliths?
- vii) Name two dramas written by Kalidas.

**PART-II**

**Section-A [20 Marks]**

*Attempt any two questions from this section*

**3. With reference to the 'Objectives Resolution', answer the following questions :**

- a) Who proposed the Resolution? When was the Resolution passed by the Constituent Assembly? Name the Act that gave legal sanctity to the Constituent Assembly. [3]
- b) State any three points of the Objectives Resolution. [3]
- c) List four principles that Babasaheb Ambedkar incorporated in the Constitution. [4]

**4. With reference to the Fundamental Duties, answer the following questions:**

- a) What are known as Fundamental Duties? In which part of the Constitution are they incorporated? [3]
- b) Give any three Fundamental Duties. [3]
- c) What is the importance of these Duties? [4]

5. There is a difference of opinion about the Directive Principles and Fundamental Rights. In this context explain the following:

- a) Differentiate (any 3) between Fundamental Rights and Directive Principles. [3]
- b) How do the Directive Principles complement Fundamental Rights? [3]
- c) What is the importance of Directive Principles? [4]

### Section-B [30 Marks]

*Attempt any three questions from this Section*

6. Study the picture and answer the following questions:



- a) Identify the picture. List any two of its characteristic features. [3]
- b) State the importance of this structure. [3]
- c) Name another structure of this period. How does the structure show that Harappan Civilisation was highly developed? [4]
7. With reference to Buddhism, answer the following questions:
- a) Who was Gautam Buddha? How did he achieve Enlightenment? [3]
- b) How did Buddha have a large following? [3]
- c) What is the Eightfold Path in Buddhism? [4]

8. **With reference to the Mauryan administration, write short notes on the following:**
- a) The Central Government [3]
  - b) District Administration [3]
  - c) Explain the Pan Indian Character of Mauryan Empire. [4]
9. **With reference to the Gupta Age, write short notes on the following:**
- a) Account of Fa-hien [3]
  - b) The Allahabad Pillar Inscription. [3]
  - c) Nalanda University. [4]
10. **With reference to the Vedic Period, answer the following questions:**
- a) Explain the class divisions in the society. [3]
  - b) State the position of women in the Vedic Period. [3]
  - c) Explain the four stages in the life of an Aryan. [4]

□□□

*Half Yearly Examination - 2024*

**Class - IX**

**Time : 2 Hrs.**

**ENGLISH LANGUAGE**

**M.M. : 80**

*Note : Answers to this Paper must be written on the paper provided separately.*

*You will not be allowed to write during the first 15 minutes. This time is to be spent in reading the question paper. The time given at the head of this Paper is the time allowed for writing the answers. The intended marks for questions or parts of questions are given in brackets [ ].*

- Attempt all five questions.

- You are advised to spend not more than 30 minutes in answering Question 1 and 20 minutes in answering Question 2.

**1. Write a composition (300 - 350 words) on any ONE of the following : [20]**

*(Do not spend more than 30 minutes on this question.)*

- a) You have recently been to a holiday resort and found the service to be excellent. Describe your experience at the resort, the surroundings, its natural beauty, the games you played and what you liked best in and around the resort.
- b) Narrate an incident in detail where you found yourself in great difficulty when a miracle helped you come out of it.
- c) Home food can never replace hotel food or fast food. Give your views either for **OR** against the statement.
- d) Write an original short story which begins with the line:  
It happened that at dusk we were passing the deserted house when .....
- e) Study the picture given below. Write a story or an account of what the picture suggests to you. Your composition may be directly about the subject of the picture or you



may take suggestions from it but there must be some clear connection between the picture and the composition.

**2. Attempt any ONE of the following: [10]**

*(Do not spend more than 20 minutes on this question)*

- a) An open space in your locality used by the children as a playground is being turned into a rubbish dump. Write a letter to the Mayor of your city pointing out the nuisance, danger and health hazards of this. Request that action be taken to stop this immediately.
- b) Your friend has not fared well in recent examinations. Write a letter to him or her expressing your concern. Give him /her some advice on how to score better marks and offer to help him/her to improve his/her performance.
3. a) You are the Head Girl/Head Boy of your school. Write a Notice to students inviting them to join the Summer Camp to be held in your school - for drama, cricket and swimming during the summer holidays. Give all other necessary details. [5]
- b) Write an email for the same summer camp to your Principal, updating him / her with details of the plans that have been chalked out. [5]
4. **Read carefully the passage given below and then answer, as far as possible, in your own words, the questions (a), (b) and (c) that follow.**

A little girl went to her bedroom and pulled a glass jelly jar from its hiding place in the closet. She poured the change out on the floor and counted carefully. Three times, even. The total had to be exactly perfect. No chance here for mistakes. Carefully placing the coins back in the jar and<sup>(5)</sup> twisting on the cap, she slipped out from the back door and made her way 6 blocks to Rexall's Drug Store with the big Red Indian Chief sign above the door. She waited patiently for the pharmacist to give her some attention but he was too busy at this moment. (10)

Tess shifted her feet to make a scuffing noise. Nothing. She cleared her throat with the most disgusting sound she could muster. No good. Finally, she took a quarter from her jar and clanged it on the glass counter. That did it!

"And what do you want?" the pharmacist asked in an *(15)* **annoyed** tone of voice. "I am talking to my brother from Chicago whom I haven't seen in ages," he said without waiting for a reply to his question. "Well, I want to talk to you about my brother," Tess answered back in the same annoyed tone. "He's really, really sick ..... and I want to *(20)* buy a miracle."

"I beg your pardon?" said the pharmacist.

"His name is Andrew and he has something bad growing inside his head and my Daddy says only a miracle can save him now. So, how much does a miracle cost?" *(25)*

"We don't sell miracles here, little girl. I'm sorry but I can't help you," the pharmacist said, softening a little. "Listen, I have the money to pay for it. If it isn't enough, I will get the rest. Just tell me how much it costs."

The pharmacist's brother was a well - dressed man. *(30)* He stooped down and asked the little girl, "What kind of a miracle does your brother need?"

I don't know," Tess replied with her eyes welling up. I just know he is really sick and Mommy says he needs an operation. But my Daddy can't pay for it, so I want to use *(35)* my money."

"How much do you have? asked the man from Chicago. "One dollar and eleven cents," Tess answered **barely** audibly.

"And it's all the money I have but I can get some more *(40)* if I need to."

"Well, what a coincidence," smiled the man. "A dollar and eleven cents the exact price of a miracle for little brothers." He took her money in one hand and with the other he clasped her hand and said, "Take me to where you *(45)* live. I want to see your brother and meet your parents. Let's see if I have the miracle you need."

That well-dressed man was Dr. Carlton Armstrong, a surgeon, specializing in neuro-surgery. The operation was completely free of charge and it wasn't long until Andrew *(50)* was home again and doing well.

Mom and Dad were happily talking about the chain of events that had led them to this place.

"That surgery," her Mom whispered, "was a real miracle. I wonder how much it would have cost?" (55)

Tess smiled. She knew exactly how much a miracle cost ..... one dollar and eleven cents ..... plus the faith of a little child.

- a) For each word given below choose the correct meaning (as used in the passage) from the options provided : [2]
- i) muster (Line 13)
- |            |             |
|------------|-------------|
| a) gather  | b) summon   |
| c) collect | d) assemble |
- ii) barely (Line 39)
- |                 |            |
|-----------------|------------|
| a) sufficiently | b) hardly  |
| c) weakly       | d) faintly |
- b) The word annoyed in the passage can be substituted by which word from among the following: [1]
- |               |              |
|---------------|--------------|
| a) frustrated | b) irritated |
| c) vexed      | d) envied    |
- c) Answer the following questions briefly in your own words: -
- i) Where was the glass jelly jar and what did it contain? Where did Tess go straight? [2]
- ii) What were the efforts made by Tess to attract the attention of the pharmacist? [2]
- iii) Who was the man from Chicago? [2]
- iv) What miracle did the man from Chicago perform? What happened as a result? [2]
- v) What was the cost of the miracle? [1]
- d) In not more than 50 words, summarize the given passage. [8]
5. a) Fill in each of the numbered blanks with the correct form of the word given in brackets. Do not copy the passage but write in the correct serial order the word or phrase appropriate to the blank space: [4]
- Example: (0) was

One of the world's greatest music composers, George Frederick Handel, (0) (be) the son of a man who (1) (disapprove) music. Handel, however had an aunt, who (2) (teach) him to sing and gave him a clavichord, a musical instrument like piano, to play secretly in the attic. In due course of time, Handel's father (3) (appoint) as a surgeon to the court of Duke John Adolph I.

One day (4) (learn) that Handel played his musical instrument, the Duke's organist invited him (5) (play) the great court organ. The organist (6) (amaze) to hear what young Handel could do and (7) (take) him to play for the Duke. At the end of the (8) (perform), the Duke called in Handel's father and suggested that his son should study music. A suggestion from the Duke was very much a command. Thus, the composer of The Messiah began a great career in music.

- b) Fill in the blanks with an appropriate word: [4]
- i) She was the heir \_\_\_\_\_ the throne.
  - ii) He was bent \_\_\_\_\_ coming first in the examination.
  - iii) Sam was \_\_\_\_\_ pressure to perform well.
  - iv) The revolt was put \_\_\_\_\_ with a strong hand.
  - v) The brothers fell \_\_\_\_\_ over their property dispute.
  - vi) The Municipality pulled \_\_\_\_\_ the illegal constructions along the road.
  - vii) The children crawled \_\_\_\_\_ a cave.
  - viii) Heavy penalties deter drivers \_\_\_\_\_ speeding.
- c) Join the following sentences to make one complete sentence without using **and**, **but** or **so**. Choose the correct option. [4]
- i) Lata is innocent. This is my belief.
    - a) That Lata was innocent is my belief.
    - b) I believe in Lata's innocence.
    - c) Lata being innocent is my belief.
    - d) My belief is that Lata is innocent.

- ii) This is the garden. The finest roses grow here.
- This is the garden of finest roses.
  - This is the garden where the finest roses grow.
  - The finest roses grow here in this garden.
  - This is the garden where the finest roses grow here.
- iii) Karmu was fined. He was jailed for one year.
- Karmu was not only fined but also jailed for one year.
  - Karmu was either fined or jailed for one year.
  - Karmu was fined for he was jailed for one year.
  - Besides being fined, Karmu was jailed for one year.
- iv) He cannot die in peace. He is a sinner.
- He cannot die in peace for being a sinner.
  - He, being a sinner, cannot die in peace.
  - He can die in peace if he is not a sinner.
  - He is a sinner and so, cannot die in peace.
- d) Choose the correct option to rewrite the following sentences according to the instructions given after each sentence.
- i) The teacher said to Tom, "Why did you act in this manner yesterday?" (*Begin with: The teacher asked \_\_\_\_\_*)
- The teacher asked Tom why he acted in this manner yesterday.
  - The teacher asked Tom why he acted in that manner yesterday.
  - The teacher asked Tom why he had acted in this manner the day before.
  - The teacher asked Tom why he had acted in that manner the previous day.

- ii) The lady is very honourable. She will not break her promise. (*End with: \_\_\_\_\_ to break her promise.*)
- The lady is so honourable to break her promise.
  - It is difficult for the honourable lady to break her promise.
  - The lady is too honourable to break her promise.
  - The lady is very honourable and therefore will not break her promise.
- iii) No sooner did she hear the shocking news than she fainted. (*Begin with: Hardly \_\_\_\_\_*)
- Hardly had she heard the shocking news when she fainted.
  - Hardly when she heard the shocking news, she fainted.
  - Hardly did she heard the shocking news when she fainted.
  - Hardly as the shocking news was heard, she fainted.
- iv) Anil is one of the swiftest runners in the school. (*Begin with: Very few runners*)
- Very few runners in the school are as swift as Anil.
  - Very few runners in the school were as swift as Anil.
  - Very few runners are as swift as Anil.
  - Very few runners in the school ran as swiftly as Anil.
- v) Cut the cake. (*Use Let and rewrite.*)
- Let us cut the cake.
  - Let the cake be cut.
  - Let him cut the cake.
  - Let the cake be cut by them.

- vi) He is successful in business but he is not helpful.  
(Begin with: *Despite* \_\_\_\_\_ )
- Despite of being successful in business, he is not helpful.
  - Despite not being helpful, he is successful in business.
  - Despite his success in business, he is helpful.
  - Despite being successful in business, he is not helpful.
- vii) We parked our car and went in. (*Begin with: Having* \_\_\_\_\_ )
- Having parked our car, we went in.
  - Having parking the car, we went in.
  - Having been parked our car, we went in.
  - Having had our car parked, we went in.
- viii) One should be kind to the poor. (*Use the noun form of kind.*)
- Be kind to the poor.
  - One should show kindness to the poor.
  - One should treat the poor kindly.
  - People should show kindness to the poor.

□□□

9451

**Half Yearly Examination - 2024**

**Class - IX - E**

**Time : 2 Hrs.**

**BIOLOGY**

**M.M. : 80**

**Note :** You will not be allowed to write during the first 15 minutes. This time is to be spent in reading the question paper. The time given at the head of this paper is the time allowed for writing the answer. The intended marks for questions or parts of questions are given in [ ] brackets.

**Section - A (Attempt all questions)**

1. Choose the correct answers to the questions from the given options. (Do not copy the questions, write the correct answers only.)

[15]

i) The cell organelle known as the delivery system of the cell

- a) Golgi apparatus    b) endoplasmic reticulum  
c) lysosome            d) ribosomes

ii) Plant tissue made of cells which are elongated and thickened at the corners

- a) parenchyma            b) collenchyma  
c) sclerenchyma        d) xylem

iii) Assertion (A) : Androecium and gynoecium are accessory parts of a flower.

Reason (R) : Accessory parts protect the reproductive parts of the flower or help them in pollination

- a) A is true and R is false  
b) A is false and R is true  
c) Both A and R are true  
d) Both A and R are false

iv) The kind of pollination in which the pollen of the same flower falls on its stigma

- a) geitonogamy          b) autogamy  
c) homogamy            d) allogamy

v) Hypocotyl elongates faster in this type of germination

- a) viviparous            b) epigeal  
c) hypogeal              d) oviparous

- vi) Product formed during anaerobic respiration in plants is
- a) soda lime
  - b) lactic acid
  - c) lime water
  - d) ethyl alcohol
- vii) Malaria is caused by a protozoan (A)\_\_\_\_\_ and is spread to humans through the bite of a female (B)\_\_\_\_\_ mosquito.
- a) A- plasmodium, B- culex
  - b) A- bacteria, B- anopheles
  - c) A- virus, B- culex
  - c) A- plasmodium, B- anopheles
- viii) Assertion (A): Non-infectious diseases cannot be spread from patient to another person.  
Reason (R): Non-infectious diseases are caused by germs.
- a) A is true and R is false
  - b) A is false and R is true
  - c) Both A and R are true
  - d) Both A and R are false
- ix) Vacuoles are covered by a covering called
- a) tonoplast
  - b) cell membrane
  - c) capsule
  - d) cell wall
- x) Assertion (A): On ripening, green chili becomes red.  
Reason (R): During ripening, the leucoplast degenerates and the carotene takes over.
- a) A is true and R is false
  - b) A is false and R is true
  - c) Both A and R are true
  - d) Both A and R are false
- xi) A teacher asked her students to name 2 places where striated muscles are found
- Mike said : arms and legs  
Will said : arms and skin  
Lucas said : Legs and urinary bladder  
Dustin said : face and neck

Who were correct?

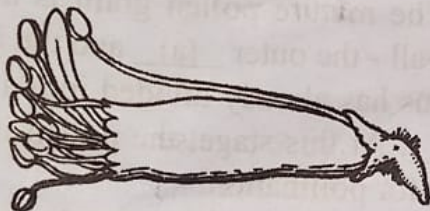
- a) Mike and Lucas    b) Will and Dustin  
c) Mike and Dustin    d) Will and Lucas

xii) Assertion (A): The stigmas of entomophilous flowers are feathery.

Reason (R): This is to trap pollen grains.

- a) A is true and R is false  
b) A is false and R is true  
c) Both A and R are true  
d) Both A and R are false

xiii) A type of androecium is shown in the figure. Name the type with an example.



- a) Monadelphous - cotton  
b) Diadelphous - pea  
c) Polyadelphous - pea  
d) Polyandrous - bombax

xiv) Bob tried to match the function of structure in a seed to its function. He tabulated the pairs as follows.

Cellular Element	Function
X	Protects the inner parts of the seed
Y	Absorbs water for embryo for germination

- a) X - seed coat, Y- hilum  
b) X - seed coat, Y- micropyle  
c) X - testa, Y- tegmen  
d) X - micropyle, Y- hilum
- xv) When a flower arises in the axil of a leaf-like structure, it is called
- a) perianth                      b) bract  
c) sepal                            d) pedicel

2. i) Name the following :

[5]

- The cell organelle which initiates cell division.
- Connective tissue which joins muscle to bone.
- A nitrogen fixing bacteria.
- A common phase in both aerobic and anaerobic respiration.
- A chemical that absorbs oxygen.

ii) Read the information about pollination and fill in the blanks :

[5]

Each stamen of a flower consists of a long filament and an anther. The anther is usually bilobed. Each lobe has two pollen sacs which contain pollen grains. The mature pollen grain is a cell with a double wall - the outer (a) and the inner (b). Its nucleus has already divided into a (c) and a (d). At this stage, the pollen is transferred to (e) for pollination.

iii) Arrange and rewrite the terms in each group in the correct order so as to be in a logical sequence beginning with the term that is underlined :

[5]

- cell membrane, nuclear membrane, nucleoplasm, cytoplasm
- stamen, carpel, sepal, corolla
- zygote, embryo, seed, allogamy
- Cnidaria, Arthropoda, Echinodermata, Mollusca
- 1st male gamete, micropyle, zygote, egg cell

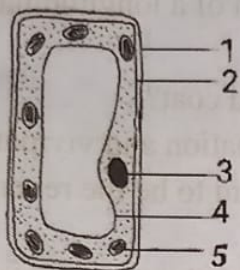
iv) Read the explanations given below and name the structure :

[5]

- Cell organelle that gives supportive framework to the cell.
- Whitish oval scar on the concave side of the bean seed.
- Protective covering of each ovule.
- Group of nectar secreting cells.
- Plastid that stores starch.

- v) Given below is a structure of the plant cell. Match the structures marked (a) to (e) with their correct functions : [5]

Plant cell



Function

- Contains pigments like anthocyanins.
- Regulates the entry of selective substances.
- Traps solar energy.
- Gives shape.
- Regulates cell functions.

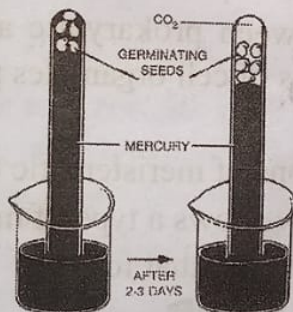
### Section-B (Attempt four)

- State the location of cartilage. [1]
  - Do you think the cells of a tiger will be larger than the cells of a rat? Explain briefly. [2]
  - Distinguish between prokaryotic and eukaryotic cells on the basis of cell organelles present and absent. [2]
  - State the functions of meristematic tissue. [2]
  - The figure below shows a type of muscle fibre. Answer the questions that follow. [3]



- Identify the muscle fibre.
  - State the function of these muscle fibres.
  - Are these muscle fibres voluntary or involuntary? [1]
- Define: emasculation [1]
  - Mention any two contrivances in flowers which favor cross pollination. [2]
  - Write one advantage and one disadvantage of cross pollination. [2]

- iv) Give reasons for the following: [2]
- Protruding and easily movable anthers are present in wind pollinated flowers.
  - Ray florets of a sunflower is termed as a neuter.
- v) Draw a well labelled diagram of a longitudinal section of a maize grain. [3]
5. i) What is the function of a seed coat? [1]
- ii) Differentiate between germination and vivipary. [2]
- iii) Explain why respiration is said to be the reverse of photosynthesis. [2]
- iv) Seeds sown very deep in soil fail to germinate. Why? [2]
- v) The following experiment was set-up to study a physiological process in plants. Answer the following questions: [3]



- What is the aim of the experiment?
  - Draw a control set-up for this experiment.
  - How will you test  $\text{CO}_2$ ?
6. i) Explain the term moulting. [1]
- ii) State two differences between flatworms and roundworms. [2]
- iii) Justify the statement that earthworms are good friends of farmers. [2]
- iv) Write two characteristic features of the division of Kingdom Plantae to which mosses and liverworts belong. [2]
- v) Given below is the diagram of an animal. Answer the questions that follow. [3]



- a) Name the phylum to which it belongs.
- b) Name its locomotory organ.
- c) Does starfish belong to this same phylum? Justify.

7. i) What are toxoids? [1]
- ii) Give reasons for the following : [2]
- a) Every room in the house should get direct sunlight at least for a short time.
  - b) Tinned and sealed food is not always safe to eat.
- iii) State two economic importance of fungi. [2]
- iv) What is vaccination? Name a vaccine for tuberculosis. [2]
- v) The diagram given below is of the roots of a certain plant. Answer the questions that follow: [3]



- a) Name the type of plant shown in the diagram.
- b) What are the swollen structures present in the root called?
- c) Name the bacteria present in the swollen structures.

8. i) What is incubation period? [1]  
ii) How is AIDS transmitted? [2]  
iii) Jon drank contaminated water. He had symptoms like body ache, yellowish eyes and yellowish urination. Name the disease he is suffering from and a vaccine to prevent it. [2]  
iv) Give suitable explanations for the following : [2]  
a) One should breathe by the nose and never by the mouth.  
b) Hands should be washed before eating.  
v) The figures given below shows two disease carriers. Answer the questions. [3]



A



B

- a) Identify A and B.  
b) What is the biological method of controlling insect A.  
c) How does insect B spread diseases.

9451

## Half Yearly Examination - 2024

Class - IX - E

Time : 2 Hrs.

GEOGRAPHY

M.M. : 80

*Note : You will not be allowed to write first fifteen minutes. This time is to be spent in reading the question paper. The time given at the head of this paper is the time allowed for writing the answers. The intended marks for questions are given in brackets [ ]. Attempt 'eight' questions in all. Part - I is compulsory. All questions from part - I are to be attempted. A total of 'five' questions are to be attempted from part - II.*

**Section-A [30 Marks]**

*Attempt all questions from this part.*

1.  a) What is Exfoliation? [5×2=10]
  - b) What is the difference between dormant volcano and extinct volcano?
  - c) Why are the line of longitudes also called meridians?
  - d) What do you mean by 'Pacific ring of fire'?
  - e) Give two examples of active volcano.
  
2. On an outline map of the world fill in the following: [10]

a) Black Sea	b) Caribbean Sea
c) Strait of Mallacea	d) Hudson Bay
e) Orange river	f) Persian gulf
g) Straight of Gibraltar	h) Gulf of Mexico
i) Bering Strait	j) Aral Sea
  
3. Choose the correct option : [10×1=10]

a) Which of these statements are correct?

  - I. Earth is the fourth largest planet of the solar system.
  - II. Earth's circumference is about 45000 km
  - III. Earth's polar diameter is about 43 km shorter than its equatorial diameter.
  - IV. Earth has a total surface area of 510 million sq.km

i) (I) and (II)	ii) (III) and (IV)
iii) (II) and (III)	iv) (I) and (IV)

- b) Consider the following statements regarding the Standard Time Zones?
- Every country calculates its Standard Meridian as the angular distance from the Greenwich Meridian.
  - Every country has only one Standard Meridian Time.
  - Indian Standard time is 5:30 hours ahead of Greenwich Meridian Time.
  - Both (i) and (iii)
- c) There are two statements marked as *Assertion (A)* and *Reason (R)*. Mark your answer  
*Assertion*: Longitudes are  $360^\circ$  and not  $361^\circ$  even though prime meridian the  $0^\circ$  longitude is included.  
*Reason*:  $180^\circ$  east and west longitudes are one and the same.
- Both A and R are true and R is the correct explanation of A
  - Both A and R are true and R is the not correct explanation of A
  - A is true but R is false.
  - A is false but R is true.
- d) The forces arising from the interior of the earth
- Endogenic forces
  - Exogenic forces
  - Interior forces
  - Plutonic forces
- e) Fossils are found in
- Sedimentary rocks
  - Volcanic rocks
  - Metamorphic rocks
  - None of the above
- f) The displacement of rocks by agent like wind water or ice
- Deposition
  - Transportation
  - Mass wasting
  - Erosion

- g) The total number of the parallels of latitude are  
 i) 180                                      ii) 182  
 iii) 183                                      iv) 181
- h) Dissolving, Oxidation, and Acid Rain are examples of what kind of weathering?  
 i) Mechanical Weathering  
 ii) Abrasion  
 iii) Chemical Weathering  
 iv) Erosion
- i) What refers to a self regulating and self sustaining unit of the biosphere  
 i) Ecosystem                              ii) Fort cycle  
 iii) Biome                                      iv) Ecology
- j) The entire core is about kilometre in diameter  
 i) 5000                                      ii) 6000  
 iii) 7000                                      iv) 8000

### Section-B [50Marks]

*Attempt any five questions from this part.*

4. a) State the main five lines of latitude. [2]  
 b) State the meaning of the International Date line. [2]  
 c) Give geographical reason for each of the following: [3]  
 i) Lines of longitude are called meridians of longitude.  
 ii) Lines of longitude are of same length.  
 iii) Diametrically opposite lines of longitude and the Equator are called Great Circles.
- d) Draw a well labelled diagram showing the different heat Zones of the earth. [3]
5. a) What is meant by rotation of the earth? State two effects of the rotation of the earth. [2]  
 b) What is the effect of the inclined axis of the earth on day and night? [2]

- c) Give a geographical reason for each of the following: [3]
- Kuala Lumpur rotates faster on the earth's axis than London.
  - We always see the sun rising in the east.
  - Norway is called the land of the Midnight Sun.
- d) Draw a well labelled diagram to show inclination of the earth on its axis. [3]
6. a) Distinguish between rocks and minerals. [2]
- b) Describe how igneous rocks are formed. State their main characteristics. [2]
- c) Give a geographical reason for each of the following : [3]
- Nife is so called.
  - The core of the earth is the most inaccessible part of the earth.
  - The earth's crust undergoes many changes.
- d) Draw a well labelled diagram to show the interior of the earth. [3]
7. a) Describe the two causes of volcanic eruptions. [2]
- b) Describe the two types of volcanoes, giving an example of each type. [2]
- c) Explain the following terms : [3]
- Volcanic Cone
  - Caldera
  - Geyser
- d) Draw a well labelled diagram showing the different parts of a volcano and the products erupted by it. [3]
8. a) Define weathering and describe the chief characteristics of weathering. [2]
- b) Distinguish between physical and chemical weathering. [2]

- c) Give a technical term for each of the following: [3]
- Disintegration or decomposition of rocks.
  - Peeling off of the outer layer of rock through contraction and expansion.
  - Expansion of minerals in rocks on coming into contact with rainwater.
- d) Draw a well labelled diagram to show the process of physical weathering. [3]

9. a) Describing the two types of ocean currents based on their temperature. [2]
- b) State any two factors responsible for causing the currents. [2]
- c) Describe one effect of each of the following three ocean currents. [3]
- Labrador Current of the Atlantic Ocean
  - The Kuroshio current.
  - Oyashio current of the Pacific Ocean.
- d) Draw a well labelled diagram showing the formation of 'spring tide and neap tide'. [3]

10. a) How is waterfall formed? [2]
- b) State the difference between weathering and denudation. [2]
- c) Give a geographical reason for each of the following: [3]
- Erosion is the dominant activity of a river in its upper course.
  - All the river do not form deltas.
  - Migratory sand dunes are uncertain and dangerous.
- d) Describe the three stages of a river? [3]

11. a) What is biological weathering? State the main agents of biological weathering. [2]

b) Distinguish between carbonation and solution? [2]

c) Give a geographical reason for each of the following : [3]

i) Vegetation prevents disintegration of rocks.

ii) Chemical weathering occurs in moist and cold climates.

iii) Physical weathering is more rapid in desert climate.

d) Describe the chief characteristics of weathering in different climates? [3]

✓ 12. a) What are tide? Name one factor that causes tides. [2]

b) State the origin and flow of the Gulf Stream. [2]

c) Give a geographical reason for each of the following : [3]

i) The eastern coast of USA are comparatively cold.

ii) Warm current produce a milder climate.

iii) There is heavy rainfall in Queensland but the Atacama desert is arid.

d) Write the factors which are responsible for circulation / motion of oceanic current (Any three point) [3]

□□□

9141

Half Yearly Examination - 2024

Class - IX *Applications*

Time : 2 Hrs.

COMMERCIAL ~~APPS~~

M.M. : 100

*Note : Answers to this Paper must be written on the paper provided separately. You will not be allowed to write during the first 15 minutes. This time is to be spent in reading the question paper. The time given at the head of this Paper is the time allowed for writing the answers. Attempt all questions from Section A and any FOUR questions from Section B. The intended marks for questions or parts of questions are given in brackets [ ].*

**SECTION- A [40 MARKS]**

1. Choose the correct answer to the questions from the given options [Do not copy the question. Write the correct answer only]. [20]
- i) Which industry produces immovable products
    - a) Tertiary industry
    - b) Extractive industry
    - c) Construction industry
    - d) Genetic industry
  - ii) These organization are engaged in buying and selling of goods
    - a) Banking and finance organization
    - b) Trading organization
    - c) Transport organization
    - d) Manufacturing organization
  - iii) Joint Hindu family business enjoys these advantages
    - a) Ease of formation
    - b) Freedom of action
    - c) Personal contact
    - d) All of these
  - iv) Which of the following is NOT a feature of sole proprietorship
    - a) No legal formalities
    - b) No profit sharing
    - c) No separate legal entity
    - d) Limited liability
  - v) The partner who simply contributes capital
    - a) Sleeping partner
    - b) Active partner
    - c) Secret partner
    - d) Limited partner
  - vi) Which of the following is /are a type of partner
    - a) Sleeping partner
    - b) Secret partner
    - c) Minor partner
    - d) All of these



- xv) Cause of depletion of resources are  
 a) Deforestation  
 b) Overgrazing  
 c) Mining  
 d) All of these
- xvi) Of the total water in the world, about 97% is  
 a) Fresh water  
 b) Salty water  
 c) Ice, caps and glaciers  
 d) None of these
- xvii) CNG stands for  
 a) Compressed natural gas  
 b) Combined natural gas  
 c) Common natural gas  
 d) None of these
- xviii) Which of the following is not a non-conventional resource of energy?  
 a) Coal energy  
 b) Solar energy  
 c) Wind energy  
 d) Hydropower energy
- xix) Control of gaseous contaminants can be done through  
 a) Combustion  
 b) Absorption  
 c) Adsorption  
 d) All of these
- xx) Industrial pollution accelerated rapidly due to  
 a) White revolution  
 b) Green revolution  
 c) Industrial revolution  
 d) None of these
2. i) Distinguish between: [5×2]  
 a) Private sector enterprise and Public sector enterprise.  
 b) Limited liability partnership and general partnership.
- ii) Justify either for or against the following statements:  
 a) Partnership is not very stable form of business.  
 b) A political party is a profit making organization.  
 c) Population growth is the cause of depletion of resources

3. Answer the following questions: [5×2]  
 i) Write any two merits of sole trading concern.  
 ii) Write short note on Health organization.  
 iii) What is a greenhouse effect?  
 iv) Mention the two techniques of conservation of soil.  
 v) What is a statutory corporation?

## SECTION B

*(Answer any four questions from this Section.)*

[60]

4. i) What are features of Joint Hindu Family Business? [5]  
 ii) Explain the role of commerce. [5]  
 iii) Explain different types of partners. [5]
5. i) Discuss five merits of joint stock company. [5]  
 ii) Discuss objectives of public enterprises. [5]  
 iii) Explain five demerits of cooperative society. [5]
6. i) Explain the importance of water. [5]  
 ii) Explain the impact of depletion of resources. [5]  
 iii) Explain different types of nonconventional resources of energy. [5]
7. i) Explain the various forms of industrial pollution. [5]  
 ii) Differentiate between trade and industry. [5]  
 iii) Explain five demerits of sole trading concern. [5]
8. i) Differentiate between partnership and company. [5]  
 ii) Explain any two types of cooperative society. [5]  
 iii) Differentiate between private limited company and public company. [5]
9. Technological inputs and industrial development leads to the depletion of resources at a faster rate. Using improved seeds, irrigation facilities, pesticides, etc., increased the production of agriculture but overusing these technological inputs degrades soil fertility. Deforestation for establishing industries endangers the wildlife and disturbs the ecology system. Using advance machines for mining which increased its output, but it also lead to overmined.
- i) Explain steps to be taken for conservation of resources. [5]  
 ii) Explain measures to control air pollution. [5]  
 iii) Explain benefits of recycling of materials. [5]

# Half Yearly Examination - 2024

## Class - IX

Time : 2 Hrs.

COMPUTER APPS.

M.M. : 100

*Note : Answers to this Paper must be written on the paper provided separately. You will not be allowed to write during the first 15 minutes. This time is to be spent in reading the question paper. The time given at the head of this Paper is the time allowed for writing the answers. Attempt all questions from Section A and any FOUR questions from Section B. The intended marks for questions or parts of questions are given in brackets [ ].*

### Section-A

Attempt all questions.

1. Choose the correct answer and write the correct option. [20]

- a) Name the characteristics of Object-Oriented Programming that is applied for overloading and over-riding.
- i) Encapsulation      ii) Polymorphism
  - iii) Abstraction      iv) Inheritance
- b) Which among the following is a runtime error?
- i) Missing semicolon
  - ii) Mismatched braces in classes and methods.
  - iii) Division by zero.
  - iv) Addition is required but subtraction is performed.
- c) Find the odd one out :
- i)  $> =$       ii)  $< =$
  - iii)  $=$       iv)  $==$
- (d)** An instance variable is defined:
- i) Before a method.
  - ii) Within a method.
  - iii) Is different for different objects of same class.
  - iv) All of these
- e) The code executed by JVM is :
- i) Source code      ii) Object code
  - iii) Byte code      iv) None of these

- f) If `s = "123456.0f"`, which among the following will be the correct datatype?
- i) `int`
  - ii) `float`
  - iii) `double`
  - iv) `String`
- g) Name the package that contains `BufferedReader` and `InputStreamReader` classes
- i) `java.util.*`
  - ii) `java.lang.*`
  - iii) `java.awt.*`
  - iv) `java.io.*`
- h) Which of these coding types is used for data type characters in java?
- i) `ASCII`
  - ii) `ISO - LATIN - 1`
  - iii) `UNICODE`
  - iv) `All of the above`
- i) The correct if statement for the following ternary operation statement is: `System.out.println (n%2 == 0 ? "true" : "false");`
- i) 

```
if(n%2==0)
    return true;
else
    return false;
```
  - ii) 

```
if(n%2==0)
    return "true";
else
    return "false";
```
  - iii) 

```
if(n%2==0)
    System.out.println("true");
else
    System.out.println("false");
```
  - iv) 

```
if(n%2==0)
    return 'true';
else
    return 'false';
```
- j) An example of a double line branching statement in java.
- i) `if()`
  - ii) `if .... else`
  - iii) `if else if ()`
  - iv) `switch case`

- k) Name the composite data type from the following.
- i) array[ ]
  - ii) int
  - iii) char
  - iv) float
- l) What is the range of int data type in java?
- i) -128 to 127
  - ii) -32768 to 32767
  - iii)  $-2^{31}$  to  $2^{31} - 1$
  - iv)  $-2^{63}$  to  $2^{63} - 1$
- m) Which of these classes contains the methods print( ) and println( )?
- i) System
  - ii) System.out
  - iii) PrintStream
  - iv) String
- n) Incrementing operator '+ +' increases the value of the variable by what number?
- i) 1
  - ii) 2
  - iii) 3
  - iv) 4
- o) An abstraction that brings in or brings out data:
- i) A class
  - ii) Stream
  - iii) An object
  - iv) All of the above
- p) A unary operator.
- i) \*=
  - ii) /
  - iii) --
  - iv) ==
- q) An expression in java can be.
- i) logical
  - ii) mathematical
  - iii) relational
  - iv) All of these
- r) A conditional operator is:
- i) Compound Assignment operator
  - ii) Arithmetic operator
  - iii) Ternary operator
  - iv) Logical operator
- s) Which of these values a Boolean variable can contain?
- i) true and false
  - ii) 0 and 1
  - iii) Any integer value
  - iv) Both (i) and (ii)

- t) In a switch ... case statement, when the switch expression does not respond to any case values then the execution transfers to:
- A break statement
  - a default case
  - a loop
  - none
2. a) Write two differences between break and continue [2]
- b) Write a keyword to convert a variable into a constant. [2]
- c) Give the output of the following: [2]
- ```

if(1 > 2)
{
System.out.println("1 is greater than 2");
}
else
{
System.out.println("2 is greater than 1");
}

```
- d) Write the differences between `a = 15` and `a == 15`. [2]
- e) Consider the following expression and find the output : [2]
- ```

int x = 10;
x -= (--x) + x * (x++) + x % 4 * x--;

```
- f) What do you mean by the term Instance Method? Give an example. [2]
- g) Define "Dangling Else condition" in java. [2]
- h) Write java expression for- [2]
- $$\frac{1}{f} = \frac{1}{u} + \frac{1}{v}$$
- i) What are Escape sequence? Give two examples. [2]
- j) Explain Implicit conversion with an example. [2]

**Section-B**

(Answer any four questions from this Section.)

The answers in this section should consist of the programs in either BlueJ environment or any program environment with Java as the base. Each program should be written using variable description / mnemonic codes so that the logic of the program is clearly depicted. Flowcharts and algorithms are not required in Section-B.

3. Write a program to pass a character as parameter and check if it is a vowel or not.  
Use switch ..... case statement.  
Example: 'A'  
It is a vowel [15]
4. Write a program to input two numbers using Scanner class and swap them using a third variable. [15]  
Hint: Before swapping: X = 50 , Y=40  
After swapping: X=40 , Y=50
5. Compute the taxi fare for the following data. [15]
- | <i>Distance travelled by TAXI</i> | <i>FARES</i>  |
|-----------------------------------|---------------|
| First 1 Km                        | Rs. 30        |
| Next 4 Km                         | Rs. 11 per Km |
| Next 10 Km                        | Rs. 12 per Km |
| Above 15 Km                       | Rs. 13 per Km |
6. a) Write a program to pass a year as parameter and check if it is a Leap year or not. [7]  
*Hint:* A Leap year is a year which has 366 days and is divisible by 4.  
Example: 2016  
It is divisible by 4. Hence 2016 is a leap year
- b) Write a program to pass three numbers as parameter and display the smallest among them. [8]

7. Write a program to calculate the commission of a salesman depending on the following conditions. [15]

<i>Sales Amount</i>	<i>Commission</i>
< 100000	NIL
100000 to <200000	10%
200000 to 300000	15%
300000 and above	20%

8. Write a menu driven program to solve the following options. The menu should display the given options. [15]
- To check integer n is positive or negative
  - To check the integer n is odd or even
  - To exit the program



9141

Half Yearly Examination : 2024-25

Class - IX

Time : 3 Hrs.

HINDI

M.M. : 80

Note : You will not be allowed to write during the first 15 minutes. This time is to be spent in reading this question paper. The time given at the head of the paper is the time allowed for writing the answer.

खण्ड- (क)

(40)

1. निम्नलिखित विषयों में से किसी एक विषय पर 250 शब्दों में रोचक निबंध लिखिए-

(15)

क) 'राष्ट्रभाषा किसी भी देश की सभ्यता व संस्कृति की पहचान होती है।' इस कथन के आलोक में भारत की राष्ट्रभाषा की स्थिति पर विचार कीजिए।

ख) आपकी प्रिय ऋतु कौन सी है और क्यों? इस ऋतु में मनाए जाने वाले त्योहारों का महत्व बताइए।

ग) कंप्यूटर आज के युग की अनिवार्यता बन गया है। कंप्यूटर के लाभों तथा इसके दुष्परिणामों की भी चर्चा कीजिए।

घ) 'खोदा पहाड़ निकली चुहिया उक्ति पर कोई मौलिक कहानी लिखिए।

ङ) नीचे दिए गए चित्र को ध्यान से देखिए और चित्र को आधार बनाकर वर्णन कीजिए अथवा कहानी लिखिए जिसका सीधा व स्पष्ट संबंध चित्र से होना चाहिए।



2. निम्नलिखित में से किसी एक विषय पर हिंदी में लगभग 120 शब्दों में पत्र लिखिए :- पूछो

क) सार्वजनिक ~~पार्कों~~ की समुचित सफाई न होने के पर सफाई कर्मचारियों की शिकायत करते हुए नगर-निगम के मुख्य अधिकारी को पत्र लिखिए।

(7)

(अथवा)

ख) अपने अनुज को पत्र लिखिए, जिसमें अनुशासन का महत्त्व बताया गया हो।

3. निम्नलिखित गद्यांश को ध्यान से पढ़िए और उसके नीचे लिखे प्रश्नों के उत्तर अपने शब्दों में लिखिए :-

(10)

प्रधानमंत्री लाल बहादुर शास्त्री जी ने एक कारखाने में साड़ियाँ देखते हुए कहा, 'साड़ियाँ तो बहुत बढ़िया हैं। क्या मूल्य है इनका?' कारखाने के मालिक ने कहा, 'जी यह आठ सौ रुपये की है और यह पूरे एक हजार दो सौ रुपये की है और यह एक हजार पाँच सौ रुपये में पड़ेगी।'

शास्त्री जी ने तुरंत उसके कान में कहा, 'ये तो सभी बहुत कीमती हैं। मुझे जैसे गरीब व्यक्ति के लिए कोई कम मूल्य की साड़ी दिखाइए ताकि मैं उसे खरीद सकूँ।'

शास्त्री जी के इस भोले उत्तर को सुनकर कारखाने के मालिक ने हँसना शुरू कर दिया। हँसते-हँसते एक क्षण बीत गया तो वह आगे कहने लगा, 'वाह सरकार ! गरीब की भी खूब कही आपने। हुजूर आप तो हमारे प्रधानमंत्री हैं। आप पूरे देश के मालिक हैं। गरीबी की बात न करें सरकार, ये साड़ियाँ तो हम आपको भेंट करने वाले हैं।' 'नहीं भाई, मैं आपसे तो क्या किसी से भी भेंट नहीं लेता।' शास्त्री जी ने गंभीरतापूर्वक कहा। 'क्यों, आप तो हमारे प्रधानमंत्री हैं। हमें यह अधिकार है कि हम अपने प्रधानमंत्री को भेंट दें।' कारखानेदार ने ऊँचे स्वर में कहा। 'हाँ, मैं प्रधानमंत्री हूँ, परंतु इसका यह अर्थ कदापि नहीं है कि जो चीज़ मैं खरीद सकने में असमर्थ हूँ, वह भेंट में लेकर अपनी पत्नी को पहनाऊँ। यह ठीक है कि मैं प्रधानमंत्री हूँ, पर हूँ तो गरीब ही। मैं तो अपनी हैसियत की साड़ियाँ खरीदना चाहता हूँ। आप कृपया मुझे कोई सस्ते से दाम वाली साड़ी बताइए, यदि हो तो।'

इस प्रकार रेशम की उत्तम व आकर्षक साड़ियों के कारखाने वाले की सारी विनय-अनुनय बेकार सिद्ध हो गई। विवश होकर उसे सस्ते दामों वाली साड़ियाँ दिखानी पड़ीं। उनमें से शास्त्री जी ने अपने घर के लिए साड़ियाँ खरीद लीं।

क) कीमती साड़ियाँ देखकर शास्त्री जी ने क्या कहा ?

ख) कारखाने वाला शास्त्री जी को साड़ियाँ किस रूप में देना चाहता था और क्यों ?

ग) शास्त्री जी ने कारखाने वाले की इच्छा को क्यों ठुकरा दिया ?

घ) शास्त्री जी ने अंततः कैसी साड़ियाँ खरीदीं ?

ङ) शास्त्री जी के उत्तर को सुनकर कारखाने के मालिक ने क्यों हँसना शुरू कर दिया तथा उसने बाद में क्या कहा ?

4. निम्नलिखित प्रश्नों के उत्तर निर्देशानुसार लिखिए : (8)

क) 'दुर्बुद्धि' शब्द का विलोम शब्द लिखिए :

अ) सम्बुद्ध

ब) सदाचार

स) सुबुद्धि

द) सदबुद्धि

ख) 'गंगा' शब्द का पर्यायवाची शब्द लिखिए :

अ) सरिता-तरिनी

ब) सुरसरि-मंदाकिनी

स) अमी-अमिय

द) तनया-तनुजा

ग) 'ईश्वर' शब्द की भाववाचक संज्ञा लिखिए :

अ) ईश्वरत्व

ब) ईश्वरीय

स) ईश्वरता

द) ऐश्वर्यता

घ) 'सम्मान' शब्द का विशेषण शब्द लिखिए :

अ) सामानित

ब) सम्मानिता

स) सम्मानित

द) समानता

ङ) शुद्ध रूप लिखिए :

अ) ओद्योगिक

ब) उद्योगिक

स) औद्योगिक

द) औद्योगिक

- च) 'आम के आम, गुठलियों के दाम' मुहावरे का अर्थ लिखिए :
- अ) अत्यधिक लाभ होना    ब) दोहरा लाभ होना  
 स) बहुत कम लाभ होना    द) साधारण लाभ होना
- छ) जानने की इच्छा रखने वाला व्यक्ति बहुत ज्ञानी होता है।  
 (रेखांकित वाक्यांश हेतु एक शब्द का प्रयोग करें)
- अ) अल्पज्ञ व्यक्ति बहुत अधिक ज्ञानी होता है।  
 ब) बहुज्ञ व्यक्ति बहुत अधिक ज्ञानी होता है।  
 स) अज्ञ व्यक्ति बहुत अधिक ज्ञानी होता है।  
 द) जिज्ञासु व्यक्ति बहुत अधिक ज्ञानी होता है।
- ज) वह दुश्मन की सेना पर टूट पड़ा। ('टूट पड़ा' के स्थान पर  
 'हमला किया' का प्रयोग कीजिए।)
- अ) दुश्मन की सेना पर उसने हमला किया।  
 ब) उसने दुश्मन की सेना पर हमला किया।  
 स) वह ने दुश्मन की सेना पर हमला किया।  
 द) उन्होंने दुश्मन की सेना पर हमला किया।

### खण्ड-ख

(साहित्य सागर गद्य)

निम्नलिखित प्रश्नों में से किन्हीं चार के उत्तर लिखिए। गद्य एवं पद्य  
 भाग में से एक-एक प्रश्न करना अनिवार्य है।

5. असत्य के आवरण में सत्य बहुत समय तक छिपा न रह सका।
- क) कौन-सी बात असत्य थी ? (2)
- ख) सत्य का पता किसे तथा कैसे चला ? (2)
- ग) श्यामू के व्यवहार में क्या परिवर्तन आ गया था ? (3)
- घ) एक दिन क्या देखकर, न जाने क्या सोचकर उसका हृदय खिल  
 उठा ? (3)

6. 'भैया गुनाह का फल मिलेगा या नहीं, यह तो भगवान जाने, पर ऐसी ही कमाई से कोठियों में रहते हैं और एक हम हैं कि परिश्रम करने पर भी हाथ में कुछ नहीं आता।'

क) उपर्युक्त कथन किसने, किससे कहा है? (2)

ख) वक्ता का संकेत किसकी ओर है? (2)

ग) 'ऐसी ही कमाई' से वक्ता का क्या आशय है? (3)

घ) वक्ता का उपर्युक्त कथन सुनकर श्रोता के मन में कौन-सा विचार आया ? (3)

7. उन दिनों एक प्रथा प्रचलित थी। यज्ञों के फल का क्रय-विक्रय हुआ करता था।

क) यज्ञों के क्रय-विक्रय से क्या आशय है? (2)

ख) यज्ञ बेचने के लिए सेठ जी कहाँ गए? (2)

ग) सेठ जी ने कहाँ भोजन और विश्राम करने की सोची? (3)

घ) सेठानी द्वारा अपना यज्ञ बेचने का सुझाव दिए जाने पर सेठ की क्या प्रतिक्रिया हुई? (3)

(साहित्य सागर पद्य)

निम्नलिखित पंक्तियों को पढ़िए और दिए गए प्रश्नों के उत्तर लिखिए :

8. पाहन पूजे हरि मिले, तो मैं पूजूँ पहार।

ताते ये चाकी भली, पीस खाय संसार।।

सात समंद की मसि करौं, लेखनि सब बनराय।

सब धरती कागद करौं, हरि गुन लिखा न जाय।।

क) पत्थर पूजने से यदि भगवान की प्राप्ति होती है, तो इसके लिए कबीर क्या करने को तैयार हैं तथा क्यों? (2)

ख) 'सात समंद की मसि करूँ' शीर्षक साखी से कबीर क्या संदेश देना चाहते हैं ? (2)

ग) 'ताते ये चाकी भली' पंक्ति द्वारा कबीर क्या व्यंग्य कर रहे हैं? (3)

घ) शब्दों के अर्थ लिखिए-

पाहन, ताते, समंद, मसि, लेखनि, कागद

(3)

9. गुन के गाहक सहस नर, बिनु गुन लहै न कोय।  
जैसे कागा कोकिला, शब्द सुनै सब कोय।।

शब्द सुनै सब कोय, कोकिला सबै सुहावन।

दोऊ को एक रंग, काग सब भये अपावन ।।

कह 'गिरिधर कविराय', सुनो हो ठाकुर मन के।

बिनु गुन लहै न कोय, सहस नर गाहक गुन के।

क) उपर्युक्त कुंडलियों का प्रसंग स्पष्ट कीजिए ?

(2)

ख) कौए और कोयल के उदाहरण द्वारा कवि क्या स्पष्ट कर रहा है? (2)

ग) कौए और कोयल में क्या-क्या समानता और असमानताएँ हैं? (3)

घ) उपर्युक्त कुंडलियों का केन्द्रीय भाव लिखिए।

(3)

10. जब तक मनुज-मनुज का यह सुख भाग नहीं सम होगा,  
शमित न होगा कोलाहल, संघर्ष नहीं कम होगा।

उसे भूल वह फँसा परस्पर ही शंका में, भय में,  
लगा हुआ केवल अपने में और भोग संचय में।

क) 'जब तक मनुज-मनुज का यह सुख भाग नहीं सम होगा इस  
पंक्ति में किस 'सुख भाग' का उल्लेख किया गया है? (2)

ख) 'कोलाहल शांत होने' और 'संघर्ष कम होने के लिए क्या होना  
आवश्यक है ? (2)

ग) 'उसे भूल' शब्द का प्रयोग कवि ने किस संदर्भ में किया है? (3)

घ) आज के मनुष्य की किस प्रवृत्ति का उल्लेख किया गया है? (3)

Peritha Geyiati

Half Yearly Examination - 2024-25

Class - IX

Time : 1 Hr.

Moral Science

M.M. : 50

*Note : reading the question paper. The time given at the head of this paper is the time allowed for writing the answers. The intended marks are given in the bracket [ ]*

1. Answer the following questions : [30]

- a) Why are children influenced by peer pressure.
- b) List any four tips that help you to study better.
- c) List the difference between needs and wants.
- d) How are educated people different from the uneducated ones.
- e) How can gender equality be promoted?
- f) What does body language refer to?

2. Write 'True' or 'False' : [10]

- a) Attentive body language shows lack of interest
- b) People do not become anxious, situations do.
- c) Men and women complement each other.
- d) Today, many women are working in collaboration with men.
- e) Difference in attitude is psyche related.
- f) Life is meant to be lived, not survived.
- g) Needs are things that you want to have.
- h) You should study sporadically and whimsically.
- i) You should make friendship with bad children.
- j) The world is biased against girls and women.

3. Write the Pledge. [10]

□□□

9141

## Half Yearly Examination - 2024

IX\_Chem

Class - IX

CHEMISTRY

M.M. : 80

Time : 2 Hrs.

*Note : Answers to this paper must be written on the paper separately. You will not be allowed to write during the first 15 minutes. This time is to be spent in reading the question paper. The time given at the head of this paper is the time allowed for writing the answers. Section A is compulsory. Attempt any four questions from section B. The intended marks for questions or parts of questions are given in brackets [ ].*

## Section-A [40 Marks]

Attempt all questions from this section.

1. Choose the most appropriate answer for each of the following :

[15]

- a) Which of the following is ionic compound ?  
i) Sodium chloride    ii) Carbon tetrachloride  
iii) Methane            iv) Ammonia
- b) The salt that undergoes photochemical decomposition is  
i) Copper sulphate    ii) Zinc carbonate  
iii) Lead bromide      iv) Silver nitrate
- c) A substance that gives reddish brown precipitate during a reaction between an Iron salt and alkali is  
i) Iron(II) hydroxide  
ii) Iron(II) sulphate  
iii) Iron(III) hydroxide  
iv) Iron(III) chloride
- d) With the rise in temperature, solubility of which substance decreases?  
i)  $\text{KNO}_3$                       ii)  $\text{NaCl}$   
iii)  $\text{CuSO}_4$                     iv)  $\text{CaSO}_4$
- e) The absolute temperature value corresponding to  $35^\circ \text{C}$  is  
i) 273 K                      ii) 318 K  
iii) 308 K                     iv) 390 K
- f) A gas evolved when Calcium bicarbonate is heated:  
i) Carbon dioxide    ii) Oxygen  
iii) Carbon monoxide iv) Hydrogen

- g) The molecular formula of Aluminium sulphate is
- $\text{Al}_2(\text{SO}_4)_3$
  - $\text{Al}(\text{SO}_4)_3$
  - $\text{AlSO}_4$
  - $\text{Al}_3(\text{SO}_4)$
- h) A basic gas formed when nitrogen combines with hydrogen under high pressure:
- Chlorine
  - Ammonia
  - Oxygen
  - Nitrogen dioxide
- i) The reaction  $\text{BaCl}_2 + \text{H}_2\text{SO}_4 \rightarrow \text{BaSO}_4 + 2\text{HCl}$  is
- Displacement reaction
  - Neutralisation reaction
  - Decomposition reaction
  - Double decomposition reaction
- j) Which of the following is the correct electronic configuration of Potassium
- 2, 8, 3
  - 2, 8, 1
  - 2, 8, 8, 1
  - 2, 8, 8, 2
- k) The value of standard pressure is
- 1 atm.
  - 760 atm.
  - 760 cm Hg
  - 100 mm Hg
- l) The valency of nitrogen in nitrogen dioxide ( $\text{NO}_2$ ) is
- One
  - Two
  - Three
  - Four
- m) A carbonate that does not decompose on heating is
- $\text{K}_2\text{CO}_3$
  - $\text{CaCO}_3$
  - $\text{ZnCO}_3$
  - $\text{PbCO}_3$
- n) A substance that does not contain water of crystallization is:
- Blue vitriol
  - Common salt
  - Glauber's salt
  - Washing soda crystals
- o) An element without neutron is
- Sodium
  - Helium
  - Neon
  - Hydrogen

2. a) State one relevant observation for each of the following reactions: [5]
- Water is added to anhydrous Copper sulphate.
  - When Copper (II) nitrate is heated.
  - When Lead nitrate and Sodium chloride reacts.
  - When Copper (II) sulphate and Sodium hydroxide reacts.
  - When  $\text{NO}_2$  gas is passed over acidified  $\text{FeSO}_4$  solution.
- b) Atomic numbers of following elements are given below: [5]
- A = 8, B = 7, C = 17, D = 11, E = 20
- State which of the above is a divalent metal.
  - State which of the above is a non metal with valency-1.
  - State the type of bonding between C and D.
  - Which element has 5 Valence electrons?
  - A gaseous element with valency-2.
- c) Write a balanced chemical equation for each of the following: [5]
- Action of heat on Potassium nitrate.
  - Action of dilute  $\text{H}_2\text{SO}_4$  on  $\text{CuO}$ .
  - A direct combination reaction between Phosphorus and Oxygen.
  - When vapours of Ammonia combines with  $\text{HCl}$  gas.
  - Iron (II) sulphate reacts with  $\text{NaOH}$ .
- d) Write chemical formula of following compounds: [5]
- Sodium sulphate
  - Ferrous hydroxide
  - Potassium dichromate
  - Zinc oxide
  - Magnesium nitrate

- e) i) Calculate the molecular mass of Ammonium sulphate  $[(\text{NH}_4)_2\text{SO}_4]$ . [5]  
ii) Find the percentage of Nitrogen in Ammonium carbonate  $[(\text{NH}_4)_2\text{CO}_3]$ .  
[H = 1, C = 12, N = 14, O = 16, S = 32]

**Section-B [40 Marks]**

Answer any four questions.

3. a) An element A has mass number 23 and atomic number 11. State the [3]  
i) Number of electrons in it.  
ii) Number of neutrons in it.  
iii) Electronic configuration of A.
- b) i) What causes temporary hardness in water? [3]  
ii) State one disadvantage of using hard water?  
iii) Give one way for the removal of temporary hardness in water.
- c) Fill in the blanks: [2]  
By increasing the temperature of an enclosed gas at constant (i), the volume of the gas (ii). This is given by Charle's law.
- d) Given mass of a gas occupies a volume of 200 ml at  $37^\circ\text{C}$ . To what temperature must the gas be heated to make its final volume as 500 ml. Assume that pressure of the gas remains constant. [2]
4. a) Draw the orbital diagram for the following: [3]  
i) Sodium Chloride molecule  
ii) Oxygen atom  
iii) Ammonia molecule
- b) Define : [3]  
i) Relative Atomic mass  
ii) Boyle's Law  
iii) Hygroscopic substance

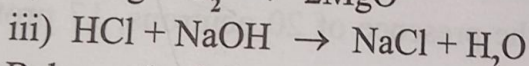
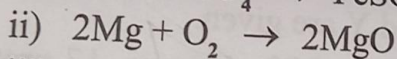
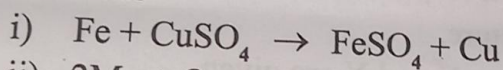
- c) Give reason : [2]
- Gases have lower densities compared to solids and liquids.
  - Noble gases do not react.

- d) Define Isotopes. Give reason why isotopes have same chemical properties but different physical properties ?

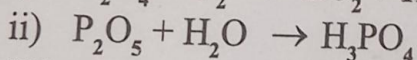
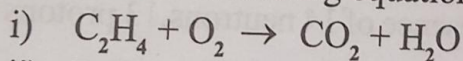
5. a) Differentiate between the following according to instruction given in bracket: [2]

- Atomic number and Mass number ( in terms of electrons, protons and neutrons) [3]
- Sodium atom and Calcium atom ( In terms of valence electrons )
- HCl and Ammonia gas ( In terms of nature )

- b) Classify the following reactions as Direct combination, Neutralisation, Displacement reactions [3]



- c) Balance the following equations : [2]



- d) When Zinc carbonate is heated, Name [2]

i) The gas evolved.

ii) The solid residue left.

6. a) Fill in the blanks with the correct word from the bracket: [3]

i) In covalent compounds, the bond is formed due to \_\_\_\_\_ (sharing/transfer) of electrons.

ii) A molecule of \_\_\_\_\_ (Ammonia/Nitrogen) contains triple bond.

iii) Neon gas has \_\_\_\_\_ (8/2) electrons in its outermost shell.

- b) Explain the following terms: [3]
- Efflorescence
  - Deliquescence
  - Exothermic reaction
- c) Write the chemical formula of the following compounds: [2]
- Sodium zincate
  - Magnesium sulphate
- d) What volume will a gas occupy at 740 mm pressure, which at 1480mm, occupies 500c.c. [2]
7. a) Explain : [3]
- Volume of gases are converted to S.T.P. conditions and then compared.
  - Nitrogen atom needs three electrons to be stable.
  - Common salt turns moist on exposure to air,
- b) Name three isotopes of Hydrogen and draw their orbital structure. [3]
- c) Two elements X and Y are given. [2]
- X shows the presence of 20 neutrons, 17 protons and 17 electrons.
- Y shows the presence of 14 neutrons, 13 protons and 13 electrons.
- Which element will form:
- A cation
  - An anion
- d) Write balanced chemical equation for the following word equation: [2]
- Aluminium + Oxygen  $\rightarrow$  Aluminium oxide
8. a) i) Give the chemical formula of blue vitriol. [3]
- What is the name given to the water molecule present in the salt?
  - Calculate the percentage of water molecule in it.

b) Identify the gases in each case:

i) A colourless odourless gas that rekindles a glowing splint.

ii) A gas that turns orange potassium dichromate paper green.

iii) A gas which gives dense white fumes with ammonia solution.

c) Choose the correct option for the following:

Washing Soda, Iron (III) chloride, Sulphuric acid

i) Efflorescent substance

ii) Dehydrating agent

d) A gas occupies 700ml at S.T.P. Find the volume occupied by the gas when its pressure is 400 mm of Hg and its temperature is  $15^{\circ}\text{C}$ .

[3]

[2]

[2]

Shruti Agrawal 9th - E 9451

(65) Annual Examination - 2024-25

Class - IX

Time : 2 Hrs.

ENGLISH - I

M.M. : 80

- i) Answers to this Paper must be written on the paper provided separately.
- ii) You will not be allowed to write during the first 15 minutes.
- iii) This time is to be spent in reading the question paper.
- iv) The time given at the head of this Paper is the time allowed for writing the answers.
- v) Attempt all five questions.
- vi) The intended marks for questions or parts of questions are given in brackets [ ].
- vii) You are advised to spend not more than 30 minutes in answering Question 1 and 20 minutes in answering Question 2.

1. (Do not spend more than 30 minutes on this question.)

Write a composition (300-350 words) on anyone of the following :

[20]

- a) Write a story having the main theme as, 'Nothing has more strength than necessity.'
- b) It is said that the best way to learn about life is to listen to the advice of family and friends. Narrate how the advice given by your grandmother helped you in the time of adversity.
- c) Animals have the same basic rights as humans. Express your views either for or against this statement.
- d) Relatives are a tedious and curious pack of people. Describe an experience, when many relatives visited your home and made you realize the truth of the above statement.
- e) Study the picture given below. Write a story or a description or an account of what it suggests to you. Your composition may be about the subject of the picture or you may take suggestions from it; however, there must be a clear connection between the picture and your composition.

[6]

[2]



2. (Do not spend more than 20 minutes on this question.)

Select any one of the following :

[10]

- a) As the President of the Sports Club of your school, write a letter to a famous sports person requesting him/her to be the Chief Guest on the occasion of Sports Day of your school. Your letter should give all the information that a guest speaker, unfamiliar with the events of the Sports Day, would require.
- b) You have gone for two weeks to a village located in the hilly region. Here you lived in a cottage without any modern amenities. You went for long treks and learnt skills of mountaineering and river rafting. Write a letter to your cousin telling him/her about your trip.
3. a) You are the President of the Students' Wing of the RWA of your colony. You and your team will be organising a cultural program on the eve of India's Republic Day. Write a notice, to be put up outside the RWA office, informing the residents about the event.
- b) Write an email to the Secretary of the RWA of your colony informing him/her about the proposed event and seeking his/her help to successfully organise the event.

[5]

[5]

ENG. - I

8451

4. Read the following passage and answer the questions that follow:

Long ago there lived a man with his wife and a young son with their little son. The man had a small farm, which produced sweet potatoes to eat. Sometimes the man used to sell the produce of the larger field of ten miles. But every week for his family.

Time went on, the son died of poor quality of food. The father gradually became poor and died after some time. The man left almost destitute. He had a strong character, a habit of making up her mind. Soon a scheme came into the mind of her life, which she did not know.

After selling her land, she moved to a suburb outside the city. She wore simple attire and dressed herself. She supported herself by doing odd jobs. She was under great stress to earn her own living. She had to carry as heavy a load as she could. The years went by. She had a fine young man who should be a scholar. He was in an excited mood. "Father," he cried, "I have found a mine has been discovered. That too with gold at the top of the list. And now, my

9451

4. **Read the following passage carefully and answer the questions that follow:**

Long ago there lived in a village a man and his wife with their little son. They were extremely poor. They had a small farm, which could produce barely enough sweet potatoes to keep body and soul together. Sometimes the man used to work as a porter to carry the produce of the larger farmers to the market at a distance of ten miles. But even then he could earn only for a week for his family.

Time went on, the severe strain of his labour and the poor quality of food told upon the health of over worked father. Gradually he became a confirmed invalid and died after some time. After the funeral, the widow was left almost destitute. She was a woman, however, with a strong character, and she realised the absolute necessity of making up her mind at once as to her course of action. Soon a scheme came to her mind. It must be the secret of her life, which not even her own son should ever know.

After selling her cottage, she moved away to a quiet suburb outside the city. Then she discarded her woman's attire and dressed herself as a man. In no other way could she support herself and her child: for in China, a woman was under great disadvantage in the way of earning her own living. She took up the job of a porter and used to carry as heavy a load as any of the men.

The years went by, and her little son grew up to be a fine young man. The mother had determined that he should be a scholar. One day her son came back home in an excited mood.

"Father," he cried, "the great desire of your heart and of mine has been granted to us today. I have passed, and that too with honours, for my name stands at the very top of the list of those who had been adjudged successful. And now, my beloved father there will be no more hard

[10]

[5]

[5]

9451

[ 4 ]

work for you. My name will soon be flashed throughout the Province. My fortune has indeed been made, and it is entirely due to the hardship you have endured."

All the time her son was talking, the mother's face shone with delight, for the hopes and wish time her son was talking, there with a rush that almost overpowered her. The youngfellow did not notice the deadly pallor that spread over his mother's face as he was speaking. She would be noticed as a noble woman, with a high ideal of what a woman's life ought to be, and she dared not to face the opinion of the world when it would be discovered that she had lived as a man. Next morning, at sunrise, when the son entered his father's room, he found him lying upon his bed, dead, but dressed in a woman's clothes. The story spread rapidly in every home, gentle and simple. The universal feeling was one of intense admiration for the devotion and heroism which had caused the mother to sacrifice her life for her son. The Emperor issued an edict with an inscription carved upon the arch with the words: "The Wonderful Man."

a) For each word given below choose the correct meaning (as used in the passage) from the options provided:

- i) told (line 10)
  - a) gave information
  - b) had a noticeable effect
  - c) did not keep a secret
  - d) ordered
- ii) endured (line 37)
  - a) persisted
  - b) borne
  - c) continued
  - d) lasted

b) Which word in the passage means the opposite of the word rich?

- a) strain
- b) invalid
- c) destitute
- d) secret

[2]

[1]

[ 5 ]

c) Answer the following questions in not more than 50 words.

- i) How did the man earn his money?
  - ii) What was the secret of the man's success? Why did she marry him?
  - iii) To whom did the son inherit the property?
  - iv) What was the reason for the mother's death?
  - v) What did the son do with the money?
- d) In not more than 50 words, write a short story on the topic 'The Honorable Man'.

5. a) Fill in each of the blanks with the correct form of the word given in brackets. Do not copy the passage. Write the word or phrase in the blank space.

Example: (0) received a large donation from the town. He made (make) a plan that you make 500,000 dollars. 2 (give) a pen to the boy. 3 (begin) his studies. 4 (help) the children. "Did your research show that extremely expensive? 5 (mumble) that he is blind and not his sister's husband. 6 (break) with four kids. The banker, "if I do not, would I give any to

[ 5 ]

- c) Answer the following questions briefly in your own words.
- i) How did the man earn a living for his family? [2]
  - ii) What was the secret scheme planned by the lady? Why did she make such plan? [2]
  - iii) To whom did the son attribute his success? [1]
  - iv) What was the reason for the deadly pallor on the mother's face? [2]
  - v) What did the son see when he entered his father's room? [2]
- d) In not more than 50 words, summarise how the mother received the honour of being 'The Wonderful Man'.
5. a) Fill in each of the numbered blanks with the correct form of the word given in brackets. Do not copy the passage but write in correct serial order the word or phrase appropriate to the blank space. [4]

Example: (0) received

A local charity had never   0   (receive) a donation from the town's banker, so the director   1   (make) a phone call. "Our records show you make 500,000 dollars a year, yet you have not   2   (give) a penny to charity," the director   3   (begin). "Would you not like   4   (help) the community?" The banker replied, "Did your research show that my mother is ill, with extremely expensive medical bills?" "Um, no,"   5   (mumble) the director. "Or that my brother is blind and not   6   (employ)? Or that my sister's husband   7   (die)   8   (leave) her broke with four kids?" "I had no idea." "So," said the banker, "if I do not give them any money, why would I give any to you?"

b) **Fill in the blanks with appropriate words.** [4]

- i) The doctors managed to bring the patient \_\_\_\_\_.
- ii) The scheme has fallen \_\_\_\_\_ for want of funds.
- iii) The cat was run \_\_\_\_\_ by a car.
- iv) He is trying to cut \_\_\_\_\_ on smoking.
- v) The old dog passed \_\_\_\_\_ in his sleep.
- vi) My cousin has given \_\_\_\_\_ his claim to the property.
- vii) The enemy blew \_\_\_\_\_ the bridge.
- viii) He takes \_\_\_\_\_ his father.

c) **Join the following sentences to make one complete sentence without using and, but or so. Choose the correct option.** [4]

- i) There is something in store for Sam. He does not know it.
  - a) Sam does not know what is stored for him.
  - b) Sam does not know that something is in store for him.
  - c) Sam does not know that something is stored for him.
  - d) Sam will not know that something is in store for him.
- ii) She came to the school. She had high fever today.
  - a) She came to the school today though she had high fever.
  - b) She came to the school today due to high fever.
  - c) She came to the school today at high/ever.
  - d) She came to the school today when she had high fever.
- iii) I have completed my studies. I am looking for a job.
  - a) I have completed my studies because I am looking for a job.
  - b) I have completed my studies to look for a job.
  - c) Having completed my studies, I am looking for a job.

- d) Upon completing at my studies, I will be looking for a job.
- iv) What happened at the match? Nobody has an idea.
- Nobody knows what happened at the match.
  - Nobody has an idea of what happened at the match.
  - Nobody had an idea of what happened to the match.
  - What happened at the match nobody knew.

**d) Choose the correct option to rewrite the following according to the instructions given after each sentence.**

[ 8 ]

- He did not know where Judy was and I did not either. (Begin with: Neither ... )
  - Neither he or I know where Judy was.
  - Neither did he nor I know where Judy was.
  - Neither he and I knew where Judy was.
  - Neither he nor I knew where Judy was.
- The witness agreed to sign the document only after much persuasion. (Begin with: Only ... )
  - Only the witness agreed to sign the document after much persuasion.
  - Only after much persuasion did the witness agree to sign the document.
  - Only document was signed by the witness after much persuasion.
  - Only the persuaded witness signed the document.
- He has not seen his parents for ages. (Begin with: It is ages ... )
  - It is ages when he has seen his parents.
  - It is ages since he has seen his parents.
  - It is ages during which he has not seen his parents.
  - It is ages/or he has not seen his parents.

iv) "How clear the sky looks today!" said Rahul.  
(Begin with: Rahul exclaimed ... )

- a) Rahul exclaimed that the sky looked clear that day.
- b) Rahul exclaimed the sky looks clear today.
- c) Rahul exclaimed how clear the sky looks today.
- d) Rahul exclaimed how clear the sky looked that day.

v) No one could have taken the responsibility.  
(Begin with: Anyone ... )

- a) Anyone could not have taken the responsibility.
- b) Anyone could not took the responsibility.
- c) Anyone could not take responsibility.
- d) Anyone does not want to take the responsibility.

vi) Do you mean to go abroad? (Use: intention)

- a) Do you have any intention to going abroad?
- b) Do you have the intention of going abroad?
- c) Do you have the intention for going abroad?
- d) Do you have your intention for going abroad?

vii) Think before you leap. (Begin with: You should leap ... )

- a) You should leap then think.
- b) You should leap after you think.
- c) You should leap so that you could think.
- d) You should leap with thinking.

viii) In spite of being fat, he runs very fast. (Begin with: Although ... )

- a) Although he is fat, but he runs very fast.
- b) Although fat, he run very fast.
- c) Although he is fat, yet he runs very fast.
- d) Although he is fat, he runs very fast.

9451

## Annual Examination - 2024-25

Class - IX

Time : 2 Hrs.

GEOGRAPHY

M.M. : 80

**Note:** You will not be allowed to write first fifteen minutes. This time is to be spent in reading the question paper. The time given at the head of this paper is the time allowed for writing the answers. The intended marks for questions are given in brackets ( ).

Attempt 'Eight' questions in all. Part - I is compulsory. All questions from part - I are to be attempted. A total of 'five' questions are to be attempted from part - II.

## PART - I

[30]

Attempt all questions from this part

1. Answer the following questions briefly : [5×2=10]

- Why are the lines of longitudes also called meridians?
- What is meant by the inclination of the Earth's axis?
  - At what angle is the Earth's axis inclined?
- State two differences between rocks and minerals.
- Explain the following terms :
  - Exfoliation
  - Oxidation
- What are the Jet streams?
  - State anyone importance of Jet streams.

2. On an outline map of the world fill in the following : [10]

- ~~The Rockies~~
- ~~The Brazilian Highland~~
- ~~River Volga~~
- ~~Gulf of Mexico~~
- ~~Strait of Gibraltar~~
- ~~The Great Dividing Range~~
- ~~South China Sea~~
- ~~The Canadian Shield~~
- ~~River Amazon~~
- Shade and label the Equatorial region in the continent of Africa

3. Choose the correct option.

[10×1=10]

- The Earth has been divided into how many Time Zones?
  - 48
  - 20
  - 12
  - 24

- b) Name the two broad divisions the earth crust is divided depending on chemical composition.
- Lithosphere, hydrosphere
  - SIAL, SIMA
  - Core, Mantle
  - Crust, Asthenosphere
- c) Apogee : Earth-moon distance \_\_\_\_\_ :: Perigee: Earth-moon distance \_\_\_\_\_.
- maximum, minimum
  - minimum, maximum
  - equal, equal
  - All of the above.
- d) The forces arising from the interior of the earth
- Endogenic forces
  - Exogenic forces
  - Interior forces
  - Plutonic forces
- e) Fossils are found in
- Sedimentary rocks
  - Volcanic rocks
  - Metamorphic rocks
  - None of the above
- f) The displacement of rocks by agent like wind water or ice
- Deposition
  - Transportation
  - Mass wasting
  - Erosion
- g) The heat radiated by the earth in the form of long waves is called :
- Terrestrial radiation
  - Heat balance
  - Conduction
  - Convection
- h) Horizontal movement: \_\_\_\_\_ : Vertical movement: air current
- Conduction
  - convection
  - winds
  - coriolis

- i) Any change in the natural quality of the environment brought about chemical, physical or biological factors :
- i) Pollution                      ii) Dust  
iii) Humidity                      iv) Pollutants
- j) A part of Earth's surface which has a comparatively high degree of uniformity of structure, surface form and climate within it :
- i) Earth Region              ii) Surface Region  
iii) Climate Region      iv) Natural Region

## PART - II

[50]

Attempt any five questions from this part.

4. a) i) Why are latitudes also called parallels of latitude? [2]  
ii) Why are all the lines of longitude of the same length?
- b) State two effects of the rotation of the earth. [2]
- c) Give a geographical reason for each of the following: [3]  
i) Great circles are the shortest routes between two places.  
ii) The Earth is a habitable planet.  
iii) Kuala Lumpur rotates faster on the Earth's axis than London.
- d) Draw a neat labelled diagram showing the position of the Earth during summer solstice. [3]
5. a) Where is Asthenosphere found? In which form does it exist? [2]
- b) i) Differentiate between intermontane plateau and volcanic plateau. [2]  
ii) Give an example of residual mountain and an example of depositional plain.

GEO.

[ 4 ]

- c) Draw a neat well labelled diagram of the Fold fountain. Mountain [3]
- d) Give a reason for each of the following: [3]
  - i) Igneous rocks are also called Primary rocks.
  - ii) Rocks like peat and anthracite are called carbonaceous rocks.
  - iii) The core of the Earth is in a semi-solid state.
- 6. a) Name any two types of volcanoes giving one example of each type. [2]
- b) Define the following terms: [2]
  - i) Epicentre
  - ii) Focus
- c) Give a geographical reason for each of the following: [3]
  - i) Volcanic activity and earthquakes occur in the same belt.
  - ii) All rivers do not form a delta.
  - iii) Chemical weathering is more common in the tropical regions.
- d) Explain the meaning of the following terms : [3]
  - i) Deflation hollow
  - ii) River meander
  - iii) Block disintegration.
- a) State four factors that affect the movement of ocean current. [2]
- b) Draw a neat and well labelled diagram showing Spring Tides. [2]
- c) Give a reason for each of the following : [3]
  - i) Newfoundland has rich fishing grounds.
  - ii) The eastern coast of Japan is warm even in January.
  - iii) The tidal range differs from one water body to the other.
- d) State three major effects of Ocean Currents. [3]
- 8. a) "Higher the latitude, lower is the temperature." [2]  
Justify the statement with an example.

- b) i) What is the cause of ozone depletion? [2]  
 ii) State the impact of ozone depletion on human life .
- c) Give a reason for each of the following. [3]  
 i) The snow on the slope of Himalayas in Nepal melt faster than that on the slope towards Tibet.  
 ii) Tropical deserts have a large daily range of temperatures.  
 iii) The temperature of Delhi is less than that of Chennai in December.
- d) Draw a neat labelled diagram of the structure of the Earth's atmosphere. [3]

9. a) Name the local winds with the region where they blow. [2]

- b) i) What are 'doldrums'? [2]  
 ii) Why is it so called?
- c) Draw a well labelled diagram of sea breeze and land breeze. [3]
- d) Give a reason for each of the following : [3]  
 i) The Westerlies in the Southern Hemisphere blow with great speed than those in Northern Hemisphere.  
 ii) There is seasonal shifting of pressure belt.  
 iii) As we go higher, Atmospheric pressure decrease.

10. a) Distinguish between absolute and relative humidity. [2]

- b) i) Name the type of rainfall experienced in the Equatorial region. [2]  
 ii) State two characteristic features of the rainfall mentioned by you.
- c) i) How is dew formed? [3]  
 ii) How is frost different from dew?  
 iii) Why is fog commonly formed in the winter season?

d) Give a reason for each of the following : [3]

- i) A rain shadow area is generally dry.
- ii) Frontal rain is common in mid latitude.
- iii) Total volume of water in the ocean and sea remains constant.

11. a) Explain how industrial waste and vehicular emission act as the source of air pollution. [2]

b) Which health hazards are associated with radioactive waste? [2]

c) i) What is organic farming.

ii) Why is this form of farming gaining popularity in recent times? [3]

d) Discuss how individuals may reduce energy consumption to create a cleaner and eco-friendly world. [3]

12. a) Why are tropical deserts found along the western margins of the continents? [2]

b) Name the economic activities practiced in the tropical grasslands. [2]

c) Give a reason for each of the following: [3]

i) "The Equatorial region is also called the lungs of the world."

ii) The trees found in the Mediterranean region have long roots and thick barks.

iii) Tundra region has a low annual range of temperature.

d) i) What type of climate is experienced in the north-western part of Europe? [3]

ii) What is the human response to the typical climate of this region?

Shouli Agrawal

9451

Annual Examination - 2024-25

Class - IX  
PHYSICS

Time : 2 Hrs.

M.M. : 80

Note :

You will not be allowed to write during the first 15 minutes. This time is to be spent in reading the question paper. The time given at the head of this paper is the time allowed for writing the answers. This question paper is divided into two sections. SECTION-A is Compulsory. Attempt any Four questions from SECTION-B.

SECTION - A

[40]

Attempt all the questions.

1. Choose the correct answers to the question from the given options. [1×15=15]

- a) The unit of time is :
- i) light year
  - ii) parsec
  - iii) leap year
  - iv) angstrom
- b) The unit of mass in S. I. System
- i) kg
  - ii) metre
  - iii) parsec
  - iv) ampere
- c) According to the third law of motion, action and reaction
- i) always act on the same body
  - ii) always act on different bodies in opposite directions
  - iii) have same magnitude and directions
  - iv) act on either body at normal to each other.
- d) A man can hear the sound of frequency :
- i) 1 Hz
  - ii) 1000 Hz
  - iii) 200 KHz
  - iv) 5 MHz
- e) A goalkeeper in a game of football pulls his hands backwards after holding the ball shot at the goal. This enables the goalkeeper to
- i) exert larger force on the ball
  - ii) reduce the force exerted by the balls on the hands
  - iii) increase the rate of change of momentum
  - iv) decrease the rate of change of momentum

- f) The inertia of an object tends to cause the object
- to increase its speed
  - to decrease its speed
  - to resist any change in its state of motion
  - to decelerate due to friction
- g) A passenger in a moving train tosses a coin which falls behind him. It means that motion of the train is
- accelerated
  - uniform
  - retarded
  - along circular tracks
- h) The unit of current is :
- ampere
  - volt
  - ohm
  - coulomb
- i) A ray of light falls normally on the plane mirror. Angle of incidence is :
- 90 degree
  - 0 degree
  - both 90 and 0 degree
  - none
- j) What is the focal-length of a spherical mirror whose radius of curvature is 30 cm?
- 15 cm
  - 60 cm
  - 40 cm
  - 30 cm
- k) If the mass of a body is doubled and its velocity becomes half, then the linear momentum of the body will
- remain same
  - become double
  - become half
  - become four times.
- l) The radius of curvature of a convex mirror is 40 cm. Find it's focal length.
- 40 cm
  - 10 cm
  - 80 cm
  - 20 cm
- m) An electric cell works :
- As a source of electrons
  - On deficit of electrons
  - As a source of protons
  - None of the above

- n) A man is standing on a boat in still water. If he walks towards the shore, then the boat will
- move away from the shore
  - move towards the shore
  - remain stationary
  - none of these
- o) Given below is an assertion and reason.
- Both assertion and reason are true and reason is the correct explanation
  - Both assertion and reason are true but reason is not the correct explanation
  - Assertion is true, but reason is wrong
  - Both assertion and reason are wrong

Assertion: All sounds are audible to us.

Reason: The audible range of the human ear is 20 kHz to 20 MHz.

2. a) **Complete the following by choosing correct answers from the bracket :** [1×6=6]

- Velocity is the rate of change of \_\_\_\_\_  
[distance/displacement]
- Acceleration is a \_\_\_\_\_ quantity. [Scalar/Vector]
- During free fall, the acceleration of the object will be \_\_\_\_\_ [Constant/zero]
- The unit of pressure is \_\_\_\_\_ [Pascal/Newton]
- The ray of light which falls on the mirror surface is called the \_\_\_\_\_ [Incident ray/reflected ray]
- Atmospheric pressure is measured using \_\_\_\_\_ [Barometer/speedometer]

b) State and define S.I. unit of resistance. [2]

c) **Select the scalar and vector from the following :**

- |                       |                    |     |
|-----------------------|--------------------|-----|
| i) Velocity           | ii) Distance       |     |
| iii) Electric current | iv) Magnetic field | [2] |

3. a) Calculate the number of seconds in a year. Take 1 year = 365 days. [2]

- b) Calculate the frequency of oscillation of Second's pendulum. Does it depend upon amplitude of oscillation? [2]
- c) Name the S.I. unit of force and define it. [2]
- d) How  $g$  and  $G$  related? [2]
- e) Name two greenhouse gases. Will these gases increase or decrease the average temperature of the earth? [2]
- f) Define linear momentum and state it's S. I. unit. [2]
- g) Write one difference between concave and convex mirror. State the two convenient rays that are chosen to construct the image by a spherical mirror for a given object? [3]

## SECTION - B

[40]

Attempt any four questions from this section.

4. a) A wooden block floats on surface of water with it's  $\frac{3}{7}$ th of volume above the surface of water. Calculate the density of wood. [3]
- b) Calculate the weight of a body of mass 10 kg in [3]
- i) kgf                      ii) newton                      iii) gf ( $g = 10 \text{ ms}^{-2}$ )
- c) Deduce an expression for the pressure at a depth inside a liquid. [4]
5. a) State three laws of liquid pressure. [3]
- b) Explain the following
- i) An egg sink in fresh water, but floats in a strong salt solution.
- ii) An iron nail floats on mercury, but it sinks in water.
- iii) The floating ice less submerged in brine than in water. [3]
- c) When brakes are applied to a bus, the retardation produced is  $25 \text{ cm s}^{-2}$  and the bus takes 20 sec to stop calculates. [3]
- i) The initial velocity of bus.
- ii) The distance travelled by bus during this time. [4]

6. a) What causes sound? State two properties of medium on which the speed of sound in it depends. [3]
- b) A solid of density 'p' has weight W. Show that its apparent weight will be  $W[1-(p_L/p)]$ , when it is completely immersed in a liquid of density  $P_L$ . [3]
- c) A ball is thrown vertically upwards. It returns 6 sec later calculate. [4]
- The greatest height reached by the ball.
  - The initial velocity of the ball. (Take  $g=10\text{ms}^{-2}$ )
7. a) Can two magnetic field lines intersect each other? Give reason to your answer. [3]
- b) The sound of an explosion on the surface of a lake is heard by a boat man 100 m away and by a diver 100 m below the point of explosion,
- Who would hear the sound first: boat man or diver?
  - Give a reason for your answer in part (i).
  - If sound takes time 't' to reach the boat man, how much time approximately does it take to reach the diver? ( $V_{\text{air}}=330\text{ms}^{-1}$ ,  $V_{\text{water}}=1450\text{ms}^{-1}$ ) [3]
- c) The area of base of a cylindrical vessel is  $300\text{cm}^2$ . Water (density =  $1000\text{kgm}^{-3}$ ) is poured it up to a depth of 6 cm calculate :
- The pressure
  - The thrust of water on the base. ( $g = 10\text{ms}^{-2}$ ) [4]
8. a) State any three ways for the judicious use of energy. [3]
- b) Define temperature and write its S.I. unit. What do you mean by anomalous expansion of water? [3]
- c) When an object is placed at a distance of 40 cm from a concave mirror, the size of image is one fourth that of the object.
- Calculate the distance of image from the mirror
  - What will be the focal length of the mirror? [4]

9. a) Show that :

rate of change of momentum = (mass)\*  
(acceleration) Under what condition does this  
relation hold ?

[3]

b) Name and state the action and reaction in the  
following cases:

i) hammering a nail

ii) a moving rocket

iii) a book lying on a table.

[3]

c) i) What is an electromagnet?

ii) State any three differences between an  
electromagnet and a permanent magnet.

[4]



Note : You will not be allowed to write during the first fifteen minutes. This time is to be spent in reading the question paper. The time given at the head of this paper is the time allowed for writing the answers. The intended marks for questions are given in brackets [ ].

प्रश्न-पत्र दो भागों में विभक्त है। खण्ड 'क' के सभी प्रश्नों के उत्तर दीजिए। खण्ड 'ख' से केवल चार प्रश्नों के उत्तर देने हैं। साहित्य सागर (गद्य) व साहित्य सागर (पद्य) से एक-एक प्रश्न करना अनिवार्य है।

खण्ड - क [40]

1. निम्नलिखित विषयों में से किसी एक विषय पर हिन्दी में लगभग 250 शब्दों में संक्षिप्त लेख लिखिए : (15)

- क) काम को कल पर टालने से मन का भारीपन बढ़ता है। जबकि कल करने वाले काम को आज ही पूरा कर लेने से हमारी कार्यक्षमता बढ़ती है और मानसिक संतोष भी प्राप्त होता है। बताइए कि एक विद्यार्थी के लिए समय का क्या महत्व है?
- ख) आज का युग विज्ञापन का युग है। कुछ उदाहरण देकर समझाइए कि विज्ञापन हमारे जीवन को कैसे प्रभावित करते हैं?
- ग) 'वन है तो भविष्य है', आज हम उसी भविष्य को नष्ट कर रहे हैं, कैसे? कथन को स्पष्ट करते हुए जीवन में वनों के महत्व पर अपने विचार लिखिए।
- घ) 'साँच को आँच नहीं', इस उक्ति को आधार बनाकर कोई मौलिक कहानी लिखिए।
- ङ) नीचे दिये गए चित्र को ध्यान से देखिए और चित्र को आधार बनाकर वर्णन कीजिए अथवा कहानी लिखिए जिसका सीधा और स्पष्ट संबंध चित्र से हो।



2. निम्नलिखित में से किसी एक विषय पर हिन्दी में लगभग 120 शब्दों में पत्र लिखिए :

(क) छात्रावास में रहने वाली छोटी बहन को पत्र लिखकर उसे अभी मोबाइल फोन खरीदने का हठ न करने के लिए समझाइए।

(7)

अथवा

ख) विद्युत अभियंता को बिजली चोरी रोकने के लिए प्रार्थना-पत्र लिखिए।

3. निम्नलिखित गद्यांश को ध्यान से पढ़िए तथा उसके नीचे लिखे गए प्रश्नों के उत्तर हिन्दी में लिखिए। उत्तर यथासंभव आपके अपने शब्दों में होना चाहिए :

(10)

एक बार महाराज कृष्णदेवराय ने अपने राज्य का वार्षिक उत्सव बड़ी धूमधाम से मनाया। उसमें आसपास के राजाओं को भी आमंत्रित किया। सभी ने उन्हें कीमती उपहार दिए। उपहारों में चार कीमती फूलदान भी थे, जो एक राजा ने दिए थे। महाराज को ये फूलदान इतने अधिक मन भाए कि उन्होंने उनकी सुरक्षा के लिए अलग से एक सेवक तैनात कर दिया और उसे सख्त आदेश दिया कि यदि फूलदानों के रख-रखाव में किसी प्रकार की लापरवाही हुई या वे टूट गए, तो उसे मृत्युदंड दिया जाएगा।

वह सेवक दिन-रात उनकी हिफाजत करता था। उन पर धूल भी नहीं लगने देता था लेकिन बदकिस्मती से एक दिन अचानक एक फूलदान उसके हाथ से छूटकर टूट गया। खबर सुनते ही महाराज आग-बबूला हो गए और उन्होंने इस लापरवाह सेवक को आठवें दिन फाँसी देने का हुक्म सुना दिया।

तेनालीराम को जब यह पता चला, तो उन्होंने महाराज को समझाने की कोशिश की कि राम सिंह बीस वर्षों से उनकी सेवा में है, उसे इतने मामूली नुकसान का इतना कठोर दंड देना उचित नहीं है। महाराज ने उनकी एक न सुनी। वे अपना-सा मुँह लेकर लौट आए, लेकिन उन्होंने उस सेवक की प्राणरक्षा का संकल्प कर लिया। वे कारागार में गए, सेवक से सारी बात की जानकारी ली और उसके कान में कुछ कहकर चले आए।

दिन तेजी से बीते और फाँसी वाला दिन आ गया। उस दिन सभी फाँसी गृह में एकत्रित हुए। महाराज अभी भी क्रोध में थे और सेवक को फाँसी पर झूलता देखना चाहते थे। सेवक को फाँसी के तख्ते पर चढ़ा दिया गया और तब जल्लादों ने उससे उसकी अंतिम इच्छा पूछी। सेवक ने कहा- "मैं बाकी बचे वे फूलदान भी देखना चाहता हूँ, जिनकी वजह से मैं फाँसी पर चढ़ाया जा रहा हूँ।"

महाराज की अनुमति से तीनों फूलदान उसके सम्मुख लाए गए। उसने आव देखा न ताव और उन फूलदानों को ज़मीन पर पटककर चूर-चूर कर दिया। महाराज के क्रोध की सीमा न रही और उन्होंने दहाड़ते हुए पूछा - "मूर्ख! ये कीमती फूलदान क्यों तोड़ दिए तुमने"- "क्या मिला तुम्हें इन्हें तोड़कर?" "तीन निर्दोषों का जीवन महाराज!" निर्भीकता से वह बोला- "जिस प्रकार मैं निर्दोष इन फूलदानों के कारण फाँसी पर चढ़ाया जा रहा हूँ, कभी-न-कभी मेरी तरह तीन और लोग भी फाँसी पर चढ़ाए जा सकते थे - ये फूलदान मनुष्यों के जीवन से अधिक कीमती नहीं हैं, महाराज।" उसकी बात सुनकर उन्हें तुरंत आभास हो गया कि क्रोध में वे कैसा अनर्थ करने जा रहे थे। उन्होंने फौरन सेवक की फाँसी स्थगित कर दी।

क) सेवक का क्या नाम था? उसे क्या काम सौंपा गया था? उस काम के साथ क्या शर्त जुड़ी हुई थी?

ख) इस कहानी में महाराज को कितनी बार क्रोध आया और क्यों? समझाते हुए लिखिए।

ग) तेनालीराम क्या चाहते थे? उन्होंने अपने काम को पूरा करने के लिए क्या प्रयास किए?

घ) महाराज के पास फूलदान कब आए थे? उन फूलदानों का क्या हश्र हुआ?

ङ) सेवक को फूलदान तोड़ने का मौका कब मिला? फूलदान तोड़कर सेवक को क्या मिला?

4. निम्नलिखित प्रश्नों के उत्तर निर्देशानुसार लिखिए :

क) 'निर्दोष' का विलोम बताइए -

अ) सदोष

ब) अपदोष

स) अदोष

द) दोषी

(1)

- ख) 'जंगल' का पर्यायवाची लिखिए - (1)
- अ) अरण्य, विपिन      ब) पादप, विटप  
 स) भूधर, अचल      द) वारिधि, पयोधि
- ग) 'कृपण' की भाववाचक संज्ञा बताइए - (1)
- अ) कृपण्य      ब) कृपणता  
 स) महाकृपण      द) कृपा
- घ) 'दर्शन' का विशेषण बताइए - (1)
- अ) दर्शनीय      ब) दर्शनी  
 स) दर्शनशीलक      द) प्रदर्शनी
- ङ) शुद्ध शब्द लिखिए - (1)
- अ) प्रामात्मा      ब) पर्यात्मा  
 स) परमात्मा      द) परमातमा
- च) 'गागर में सागर भरना' मुहावरे का अर्थ बताइए - (1)
- अ) कम बोलना      ब) बहुत कम अंतर होना  
 स) बहुत अधिक बोलना      द) कम शब्दों में अधिक कहना
- छ) देश पर मर-मिटने वाले वीर कभी नहीं मरते। (रेखांकित वाक्यांश हेतु एक शब्द लिखिए) (1)
- अ) देश पर मर - मिटने वाले वीर अजर होते हैं।  
 ब) देश पर मर- मिटने वाले वीर सर्वव्यापक होते हैं।  
 स) देश पर मर- मिटने वाले वीर अनंत होते हैं।  
 द) देश पर मर-मिटने वाले वीर अमर होते हैं।
- ज) मैंने किसी के रोने की आवाज़ सुनी। (1)
- (‘मैंने’ के स्थान पर ‘मुझे’ का प्रयोग करें एवं वाक्य पुनः लिखें)
- अ) मुझे किसी के रोने की आवाज सुनाई दी।  
 ब) मुझे किसी के रोने की आवाज आई।  
 स) मुझे रोने की आवाज किसी की आई।  
 द) मुझे किसी के रोने की आवाज सुनी थी।

5. निम्नलिखित गद्यांश को ध्यानपूर्वक पढ़िए तथा उसके नीचे लिखे प्रश्नों के उत्तर हिन्दी में लिखिए- (10)

‘बस पाँच सौ! इतनी-सी रकम देकर, आप मेरा अपमान कर रहे हैं।’

क) वक्ता कौन है? इतनी-सी रकम से उसका क्या तात्पर्य है?

ख) वक्ता की बात सुनकर रसीला ने क्या समझ लिया? उस संबंध में वह क्या सोचने लगा?

ग) रसीला ने यह बात किसे बताई? रसीला की बात सुनकर उसने क्या कहा?

घ) इस कहानी में लेखक ने समाज की कौन-सी बुराई को प्रकट करने का प्रयास किया है? क्या वे अपने प्रयास में सफल रहे हैं? समझाइए।

6. ‘महत्त्व मूर्ति के रंग-रूप या कद का नहीं उस भावना का है वरना तो देशभक्ति भी आजकल मज़ाक की चीज होती जा रही है’ (10)

क) यहाँ किस मूर्ति की बात की जा रही है? वह मूर्ति कहाँ पर स्थित थी?

ख) मूर्ति में क्या कमी थी? उस कमी को कौन पूरा करता था और कैसे?

ग) कस्बे की क्या-क्या विशेषताएँ थीं?

घ) हालदार साहब का चरित्र-चित्रण लिखिए।

7. ‘मैंने देखा कि कुहरे की सफेदी में कुछ ही हाथ दूर से एक काली-सी मूर्ति हमारी तरफ आ रही थी।’ (10)

क) लड़का कहाँ और क्या नौकरी करता था?

ख) लड़के ने अपने घर-परिवार के विषय में क्या बताया?

ग) इस समय उस बालक के समक्ष कौन-सी समस्या थी? क्या वह हल हो पाई? यदि नहीं तो क्यों?

घ) अपना-अपना भाग्य ‘कहानी के शीर्षक की सार्थकता पर विचार प्रकट करें।

## साहित्य सागर (पद्य-भाग)

8. निम्नलिखित पद्यांश को पढ़कर नीचे लिखे प्रश्नों के उत्तर लिखिए-

(10)

रहिए लटपट काटि दिन, बरु घामे मा सोय।

छाँह न बाकी बैठिए, जो तरु पतरो होय।।

जो तरु पतरो होय, एक दिन धोखा देहैं।

जा दिन बहै बयारि, टूटि तब जर से जैहैं।

कह गिरिधर कविराय छाँह मोटे की गहिए।

पाती सब झरि जायँ, तऊ छाया में रहिए।।

क) किस प्रकार के पेड़ की छाया में नहीं बैठना चाहिए और क्यों?

ख) 'छाँह मोटे की गहिए'- कवि ने ऐसा क्यों कहा है?

ग) पतला पेड़ हमें किस प्रकार धोखा दे सकता है?

घ) शब्दार्थ लिखिए - घामे, पतरो, तरु, पाती, बयारि, गहिए

9. ऊँचा खड़ा हिमालय, आकाश चूमता है,

(10)

नीचे चरण तले पड़, नित सिंधु झूमता है।

गंगा, यमुना, त्रिवेणी, नदियाँ लहर रही हैं,

जगमग छटा निराली, पग-पग पर छहर रही हैं।

वह पुण्यभूमि मेरी, वह स्वर्णभूमि मेरी।

वह जन्मभूमि मेरी, वह मातृभूमि मेरी।

क) उपर्युक्त पंक्तियों का प्रसंग स्पष्ट कीजिए।

ख) 'नीचे चरण तले पड़' से कवि क्या कहना चाहते हैं?

ग) कवि ने भारतभूमि के लिए किन-किन संबोधनों का प्रयोग किया है?

घ) हिमालय की क्या विशेषता है?

10. आगे-आगे नाचती-गाती बयार चली,

(10)

दरवाज़े-खिड़कियाँ खुलने लगीं गली-गली,

पाहुन ज्यों आए हो, गाँव में शहर के।

मेघ आए बड़े बन - ठन के सँवर के।

क) मेघों की तुलना किससे की गई है?

ख) 'पाहुन ज्यों आए हों गाँव में शहर के' - से कवि का क्या तात्पर्य है?

ग) मेघों के आने पर धूल की क्या प्रतिक्रिया हुई?

घ) कविता का केन्द्रीय भाव लिखिए।

**Annual Examination - 2024-25**

**Class - IX**

**Time : 2 Hrs. COMPUTER APPLICATIONS M.M. : 100**

*Note: Answer to this paper must be written on the paper provided separately. You will not be allowed to write during first 15 minutes. This time is to be spent in reading the question paper. The time given at the head of this paper is the time allowed for writing the answers. This paper is divided into two sections. Attempt all questions from Section A and any four questions from Section B. The intended marks for questions or part of questions are given in brackets [ ].*

**SECTION - A**

**Attempt all questions from this section.**

**1. Choose the correct answer and write the correct option :** **[20]**

- i) Which of the following is a valid flow of control statement?
  - a) for
  - b) continue
  - c) break
  - d) both (b) & (c)
- ii) The ability of a class to acquire properties of another class is called
  - a) polymorphism
  - b) inheritance
  - c) encapsulation
  - d) abstraction
- iii) What makes Java programs platform independent?
  - a) Source code
  - b) executable code
  - c) byte code
  - d) both (a) & (b)
- iv) How many bits will be allocated by the data type char
  - a) 8 bits
  - b) 64 bits
  - c) 32 bits
  - d) 16 bits
- v) The statement  $(100 == 100) \parallel (200 != 200)$  evaluates to
  - a) 0
  - b) 1
  - c) true
  - d) false
- vi) If  $(x != y) z = x$ ; else  $z = y$ ; can also be written as
  - a)  $z = (x != y) ? x : y$ ;
  - b)  $z = (x != y) ? y : x$ ;
  - c)  $z = (x == y) ? x : y$ ;
  - d) none

- vii) UNICODE is a
- a) 8 bits code
  - b) 16 bit code
  - c) 32 bit code
  - d) 64 bit code
- viii) Assertion(A): The char data type can store a numeric value.  
Reason(R): The char data type internally represented using the Unicode standard.
- a) Both (A) and (R) are true and (R) is the correct explanation of (A)
  - b) Both (A) and (R) are true and (R) is not the correct explanation of (A)
  - c) (A) is true but (R) is false
  - d) (A) is false but (R) is true.
- ix) What will be the output when the statement is written as `System.out.println ('A' + 2);`
- a) A2
  - b) C
  - c) 67
  - d) compile time error
- x) Which operator is not a binary operator?
- a) `>=`
  - b) `&&`
  - c) `*`
  - d) none
- xi) The statement(s) that appears only once but may execute many times are known as
- a) sequences
  - b) conditional
  - c) iteration
  - d) both (b) & (c)
- xii) Which of these classes contain the method `print()` and `println()` ?
- a) `System.out`
  - b) `System`
  - c) `BufferedReader`
  - d) `PrintStream`
- xiii) What is the default package in Java?
- a) `java.util`
  - b) `java.lang`
  - c) `Java.io`
  - d) none
- xiv) Which of the following is a safeguard against Intellectual Property Rights?
- a) Malicious code
  - b) Spamming
  - c) Copyright
  - d) Cracking

xv) What is the highest value stored in a variable of byte type?

- a) 128
- b) 127
- c) -128
- d) -127

xvi) Assertion(A) : A for loop in Java can be used without initialization, condition or increment statement.

Reason(R): All three components of the *for* loop are optional in Java syntax.

- a) Both (A) and (R) are true and (R) is the correct explanation of (A)
- b) Both (A) and (R) are true and (R) is not the correct explanation of (A)
- c) (A) is true but (R) is false
- d) (A) is false but (R) is true.

xvii) Which of the following is a non-primitive data type?

- a) String
- b) boolean
- c) char
- d) byte

xviii) What does the spamming refer to in the context of digital communication?

- a) Sending unsolicited bulk messages, often for commercial purposes
- b) Encrypting emails for security purposes
- c) Forwarding jokes to the large group of friends
- d) none

xix) Which of the following is not a jump statement in Java?

- a) goto
- b) break
- c) continue
- d) return

xx) What was the initial name of Java?

- a) java
- b) Oak
- c) Oake
- d) none

2. a) Identify and name the following tokens :

- i) public
- ii) 'a'
- iii) ==
- iv) {}

[2]

- b) Write a Java expression for the following : [2]

$$\sqrt{\frac{3x + x^2}{a + b}}$$

- c) If the value of basic = 1500, what will be the value of tax after the following statement is executed?  
tax = basic > 1200 ? 200 : 100; [2]
- d) Give the output of following code and mention how many times the loop will execute? [2]
- ```
int i;
for(i=5; i>=1;i --)
{
    if(i%2 ==1)
    continue;
    System.out.print(i+ " ");
}
```
- e) Evaluate the following expression if the value of x=2, y=3 and z=1. [2]
- $$x = z + y ++ + y$$
- f) Give the output of the following : [2]
- $$\text{Math.sqrt(Math.max(9, 16))}$$
- g) State the difference between while and do while loop. [2]
- h) Write the return data type of the following function. [2]
- Math.round( )
  - Math.abs()
- i) Convert the following if else if construct into switch case [2]
- ```
if (var== 1)
System.out.println("good");
else if(var==2)
System.out.println("better");
else if(var==3)
System.out.println("best");
else
System.out.println("invalid");
```

- j) What are the types of conversion shown by the following examples: [2]
- `char c = (char) 120;`
  - `int x = 't';`

### Section - B

(Attempt any four questions)

3. Using the switch-case statement, write a menu driven program to do the following :

- a) To generate and print Letters from A to Z and their Unicode Letters.

Letters	Unicode
A	65
B	66
.	.
.	.
.	.
z	90

- b) Display the following pattern using iteration (looping) statement:

```

1
1 2
1 2 3
1 2 3 4
1 2 3 4 5

```

[15]

4. A special two-digit number is such that when the sum of its digits is added to the product of its digits, the result is equal to the original two-digit number. Example:

Consider the number 59.

[15]

Sum of digits =  $5 + 9 = 14$

Product of its digits =  $5 \times 9 = 45$

Sum of the sum of digits and product of digits =  $14 + 45 = 59$

Write a program to accept a two-digit number. Add the sum of its digits to the product of its digits. If the value

is equal to the number input, output the message "Special 2- digit number" otherwise, output the message "Not a special 2-digit number".

5. Write a Java program to generate and display the first 10 terms of the Fibonacci series 0,1, 1, 2,3, 5 ...  
The first two Fibonacci numbers are 0 and 1, and each subsequent number is the sum of the previous two. [15]
6. Write a Java program to enter any three numbers from the user using Scanner and display the smallest as well as largest of three numbers. [15]
7. A Pre-Paid taxi charges from the passenger as per the tariff given below :

DISTANCE	RATE
Up to 5 km	Rs. 100
For the next 10 km	Rs. 10/km
For the next 10 km	Rs.8/km
More than 25 km	Rs.5/km

Write a program to input the distance covered and calculate the amount to be paid by the passenger. The program displays the printed bill with the details given below :

Taxi No. : \_\_\_\_\_  
 Distance Covered : \_\_\_\_\_  
 Amount to be Paid : \_\_\_\_\_

[15]

[3×5=15]

8. Answer the following questions :
- What is copyright?
  - What is hacking? Discuss anyone motive behind hacking.
  - List any three internal threats to a system.
  - What are viruses? What harm can they do to a system?
  - What do you mean by software piracy? Explain.



Hridayashi Dubey

26

Annual Examination - 2024-25

Class - IX - B

Time : 3 Hrs.

MATHEMATICS

M.M. : 80

**Note:** You will not be allowed to write during the first 15 minutes. This time is to be spent in reading the question paper. The time given at the head of this paper is the time allowed for writing the answers. Attempt all questions from **SECTION A** and any four from **SECTION B**. The intended marks for question or parts of questions are given in brackets [ ].

**SECTION - A**

[40]

Attempt all questions from this Section.

1. Choose the correct answers to the questions from the given options. (Do not copy the questions, write the correct answers only)

[15]

a) If  $x = 2 + \sqrt{3}$ , then the value of  $\sqrt{x} + \frac{1}{\sqrt{x}}$  is :

i)  $3 + \sqrt{3}$

ii)  $\sqrt{6}$

iii)  $2\sqrt{6}$

iv) 6

b) If  $x^a = y$ ,  $y^b = z$ ,  $z^c = x$  then  $abc$  is :

i) 1

ii) 2

iii)  $2^0$

iv) 0

c) D is a point on the side of BC of a  $\triangle ABC$  such that AD bisects  $\angle BAC$  then :

i)  $BD = CD$

ii)  $BA > BD$

iii)  $BD > BA$

iv)  $CD > CA$

d) If  $\log_3 n - \log_3 4 = 2$ , then  $n$  is :

i) 8

ii) 400

iii) 36

iv) 6

e) The area of an equilateral triangle is  $173.2 \text{ m}^2$  and then perimeter is :

i) 20 m

ii) 40 m

iii) 60 m

iv) 80 m



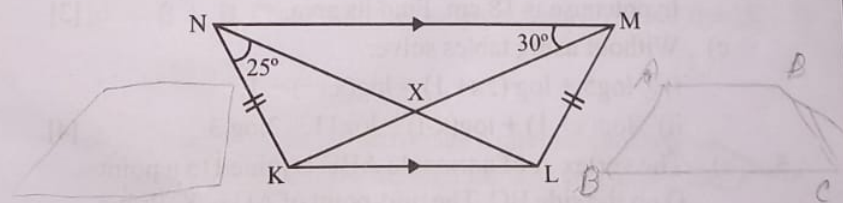
the volume is :

- i) 729 cm<sup>3</sup>                      ii) 1000 cm<sup>3</sup>
- iii) 1331 cm<sup>3</sup>                    iv) 512 cm<sup>3</sup>
- m) If  $\tan 38 = \cot(x+40)$ , then x is :
  - i) 78°                                  ii) 12°
  - iii) 2°                                  iv) 52°
- n) Statement 1 : The abscissa of a point (5, 2) is 5  
 Statement 2 : The perpendicular distance of a point from y-axis is called abscissa. Which of the following is valid?
  - i) Only 1                              ii) Only 2
  - iii) both 1 and 2                    iv) neither 1 nor 2
- o) A wire of length 36 cm is bent in the form of a semi-circle, then the radius of the semi-circle is :
  - i) 9 cm                                  ii) 8 cm
  - iii) 7 cm                                iv) 6 cm

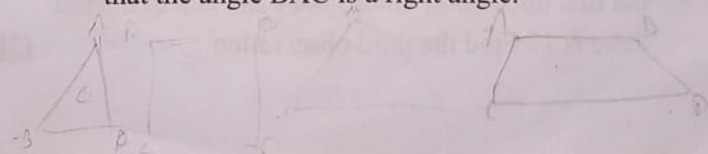
UMDN = 30

2. a) If  $\frac{(49)^{n+1} \cdot 7^n - (343)^n}{7^{3m} \cdot 2^4} = \frac{3}{343}$ , prove that  $m = (n+1)$ . [4]

- b) KLMN is an isosceles trapezium whose diagonals cut at X and KL is parallel to NM.  
 If  $\angle KNL = 25^\circ$ ,  $\angle KMN = 30^\circ$ .  
 Find i)  $\angle KXN$  ii)  $\angle MLN$  [4]



- c) AD is an altitude of a  $\Delta ABC$  and  $AD = 12$  cm,  $BD = 9$  cm and  $DC = 16$  cm long respectively. Prove that the angle BAC is a right angle. [4]



... have more share than women

3/6

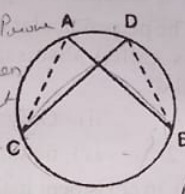
[4]

3. Solve :  $\frac{3x-6}{4} + 3 - \frac{5y-4}{2} = \frac{5y}{2}, \frac{y-x}{4} + \frac{x}{8} - \frac{7x-5y}{3} = y-2x$  [4]

b) i) The radius of a circle is 2.5 cm, AB, CF are two parallel chords 3.9 cm apart. If AB = 1.4 cm, find CF.

ii) In the given figure AB=CD, prove that AC=DB. [2+2=4]

Statement :  
 AB = CD / Given  
 DC = AB / Given  
 CB = AD / Arc  
 AC = DB



iii) Factorize the following :

i)  $x^4 + 7x^2 + 16$ .

ii)  $x^3 - \frac{1}{x^3} - 6x + \frac{6}{x}$  [2+3=5]

SECTION - B

[40]

Attempt any four questions from this section.

4. a) If  $x = 2 + \sqrt{3}$ , find the value of  $x^2 + \frac{1}{x^2}$ . [3]

b) The perimeter of a right triangle is 50 cm and the hypotenuse is 18 cm. Find its area, [3]

c) Without using tables solve:  
 i)  $\log 5 + \log(5x+1) = \log(x+5) + 1$ .  
 ii)  $\log(x+1) + \log(x-1) = \log 11 + 2\log 3$  [4]

5. a) The vertex A of a triangle ABC is joined to a point D on the side BC. The mid-point of AD is X. Prove that the area of triangle BXC is half of triangle ABC. [3]

b) The mean of 5 observations is 15. If the mean of the first three observations is 14 and that of the last three is 17 Find the third observation. [3]

iv)

... have more share than women

[5]

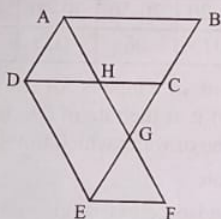
- c) In how many years will a sum of Rs 3000 at 20% per annum compounded semi-annually become Rs 3993? [4]

6. a) Find the value of  $x^2 + \frac{1}{x^2}$  if [3]

i)  $x - \frac{1}{x} = 6$       ii)  $x - \frac{1}{x} = \sqrt{29}$

- b) Prove that the figure formed by joining the mid-points of the consecutive sides of a quadrilateral is a parallelogram. [3]

- c) In the given figure  $AB \parallel DC \parallel EF$ ,  $AD \parallel BC$  &  $ED \parallel FA$ . Prove that the  $A(DEFH) = A(ABCD)$  [4]



$A(DEFH) = A(ABCD)$   
 $AB \parallel DC \parallel EF$

- a) The side BC of a square ABCD is produced to any point E. prove that  $AE^2 = 2BC \cdot BE + CE^2$ . [3]

- b) If A, B, C are the interior angles of a  $\Delta$ , prove that [3]

$$\tan \frac{(B+C)}{2} = \cot \frac{A}{2}$$

- c) A road 3.5 m wide surrounds a circular plot whose circumference is 44 m. Find the cost of paving the road at Rs 10 per  $m^2$ . [4]

8. a) Two cubes each of volume  $343 \text{ cm}^3$  are joined end to end. Find the surface area of the resulting cuboid. [3]

$$x^2 + \frac{1}{x^2}$$

$$\frac{x-5y}{3} = y-2x \quad [4]$$

B, CF are  
 of AB = 1.4

that AC = DB.

$$[2+2=4]$$

$$[2+3=5]$$

$$[40]$$

$$[3]$$

$$[3]$$

$$[4]$$

point  
 prove  
 ABC. [3]

n of  
 last

$$[3]$$

[26]  
 15

Dubey  
 - 2024-25

ICS M.M.  
 the first fifteen minutes  
 on paper. The time given  
 for writing the answers is  
 compulsory. A total of fifteen  
 marks are to be written out of three questions  
 is from section B.

this part [30 Mar

Right to Information is an implied Fundamental Right meaning \_\_\_\_\_

- i) It is a part of a named Fundamental Right.
- ii) It partakes of the same basic nature and character of the Fundamental Right.
- iii) It is implicit in the Right to Freedom and Expression.

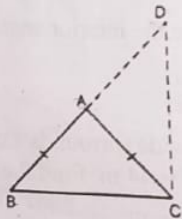
- b) Using ruler and compasses only construct the parallelogram ABCD, given that  
 $AB = 6 \text{ cm}$ ,  $BC = 4 \text{ cm}$  and altitude =  $2.9 \text{ cm}$ . [3]
- c) If  $x^2 + y^2 = 51xy$ , prove that

$$\log\left(\frac{x-y}{7}\right) = \frac{1}{2}(\log x + \log y) \quad [4]$$

9. a) AB and CD are two parallel chords of a circle such that  $AB = 16 \text{ cm}$  and  $CD = 30 \text{ cm}$ . If the chords are on the opposite sides of the centre and the distance between them is  $23 \text{ cm}$ , find the radius of the circle. [5]
- b) Construct the frequency polygon for the following data : [5]

Class	0-10	10-20	20-30	30-40	40-50
Frequency	03	07	06	02	05

10. a) The area of cross-section of a pipe is  $5.4 \text{ cm}^2$  and water is pumped out of it at the rate of  $27 \text{ km/hr}$ . Find in liters the volume of water which flows out of the pipe in one minute. [3]
- b) In the figure, ABC is an isosceles triangle in which  $AB = AC$ . The side BA is produced to D such that  $AB = AD$ . Prove that  $\angle BCD$  is a right angle. [3]



- c) Solve graphically the simultaneous equations :  
 $x + y + 3 = 0$  and  $3x - 2y + 4 = 0$ . [4]

□□□

Hrudiyarshi Dubey  
Annual Examination - 2024-25  
Class - IX - V

(26)

Time : 3 Hrs.

**MATHEMATICS**

M.M. : 80

Note: You will not be allowed to write during the first 15 minutes. This time is to be spent in reading the question paper. The time given at the head of this paper is the time allowed for writing the answers. Attempt all questions from Part-I (compulsory). A total of five questions are to be attempted from Part-II, two out of three questions from section A and three out of five questions from section B.

Hrudiyarshi Dubey  
Annual Examination - 2024-25  
Class - IX

(26)

Time : 2 Hrs.

**HISTORY & CIVICS**

M.M. : 80

Note: You will not be allowed to write during the first fifteen minutes. This time is to be spent in reading the question paper. The time given at the head of this paper is the time allowed for writing the answers. Attempt all questions from Part-I (compulsory). A total of five questions are to be attempted from Part-II, two out of three questions from section A and three out of five questions from section B.

**PART - I**

[30 Marks]

Attempt all questions from this part

1. Choose the correct option : [16]
- a) Right to Property is \_\_\_\_\_.
    - i) a Fundamental Right
    - ii) a Fundamental Duty
    - iii) a Legal Right
    - iv) a Directive Principle
  - b) Right to Information is an implied Fundamental Right meaning \_\_\_\_\_.
    - i) It is a part of a named Fundamental Right.
    - ii) It partakes of the same basic nature and character of the Fundamental Right.
    - iii) It is implicit in the Right to Freedom and Expression.
    - iv) All of the above.
  - c) Directive Principles: \_\_\_\_\_ :: Fundamental Right: Justifiable
    - i) Enforceable by courts    ii) Not justifiable
    - iii) Obligatory                iv) Mandatory
  - d) People of India directly elect their representatives to the Lok Sabha and the \_\_\_\_\_.
    - i) Rajya Sabha
    - ii) State Legislative Council
    - iii) State Legislative Assemblies
    - iv) Parliamentary Committees

9. a) Show that:  
rate of change of momentum [9]

ग)  
अ  
घ) सं  
कह  
ड) नीचे  
बनाक  
और स



Hridayasht...

[2]

- e) Under the system of local self-government, which local body discharges judicial functions in a rural area?
- i) Gram Panchayat
  - ii) Nyaya Panchayat
  - iii) Panchayat Samiti
  - iv) Gram Sabha
- f) Which of the following is NOT a part of compulsory functions of a Municipal Corporation?
- i) Provision of public health services
  - ii) Provision of electricity, water, sewage disposal
  - iii) Undertaking public safety and security
  - iv) Provision of housing for all
- g) Complete the analogy with reference to Khilji Administration.
- Market controller : Shahna :: Identity card: \_\_\_\_\_
- i) Dagh
  - ii) Chehra
  - iii) Tanka
  - iv) None of the above
- h) Name the new faith promulgated by Akbar.
- i) Mahzar
  - ii) Sulh-kul
  - iii) Din-i-Ilahi
  - iv) Ibadat
- i) Name the oldest European Church in India.
- i) St. Francis Church (Kochi)
  - ii) St. Vasco Church
  - iii) St. Francisco Church
  - iv) St. Anglico Church
- j) Interest in man, his interests, his nature and his life on earth is referred to as \_\_\_\_\_.
- i) Spirituality
  - ii) Theology
  - iii) Humanism
  - iv) Reformation
- k) Who found the Society of Jesus?
- i) Ignatius Loyola
  - ii) Ignatius Gloriana
  - iii) Philippe de Bourbon
  - iv) Philip V

9. HISTO

l)

m)

n)

o)

p) V

B

i)

iii

2. a) Na

b) Na

c) Be

fo

- 1) Who among the following, visited India during the reign of Chandragupta II?
- i) Fa-hien                      ii) Hiuen Tsang  
iii) I-tsing                      iv) None of these
- m) Who was the founder of the Slave Dynasty?
- i) Iltutmish                      ii) Ruknuddin  
iii) Qutubuddin Aibak      iv) Muhammad Ghori
- n) Which of the following was NOT a change associated with the Industrial Revolution?
- i) Production by machines  
ii) Wages to employees for their labour  
iii) Large scale production of goods  
iv) Domestic system production
- o) Select the option that shows the correct relationship between i) and ii).
- i) The Great Bath has a large rectangular tank in a courtyard surrounded by a corridor on all four sides.  
ii) The water for the Great Bath was provided by the Indus River.
- a) (ii) contradicts (i)  
b) (ii) is the reason for (i)  
c) (i) is true but (ii) is false  
d) (i) and (ii) are independent of each other
- p) Which of the following means 'Three Baskets' of Buddhist canon?
- i) Jataka                      ii) Tripitikas  
iii) Angas                      iv) Dwadashangi
2. a) Name two functions of the Nyaya Panchayat. [2]  
b) Name the three-tier institutions of the Panchayati Raj. [2]  
c) Between whom was the First Battle of Panipat fought? What was the outcome of the battle? [2]

Time

Note : You  
time is to  
of this pag  
for questi

प्रश्न-पत्र दो  
केवल चार प्र  
प्रश्न करना

1. निम्नलि

250 श

क) का

कल

काय

बता

ख) आज

कि

ग) 'वन

हैं, कै

अपने

घ) 'साँच

कहानी

ङ) नीचे

बनाक

और स

- d) Mention any two doctrines of the Sufi Cult. [2]  
 e) What is meant by the term 'Industrial Revolution'? [2]  
 f) Name any two famous literary figures of the Gupta Age. [2]  
 g) Mention any two causes of the 'Renaissance'. [2]

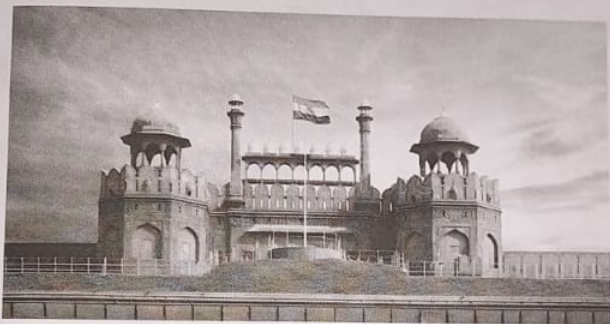
**PART - II****[50 Marks]****SECTION - A (Civics)**Attempt any **two** questions from this Section.

3. With reference to elections, answer the following :  
 a) What is known as General Elections? [3]  
 b) State two points of difference between a by-election and mid-term election. [3]  
 c) State any four functions of the Election Commission. [4]
4. With reference to the local self-government, answer the following questions :  
 a) List three functions of the Panchayat Samiti. [3]  
 b) State any three functions of the Mayor. [3]  
 c) Giving examples, state how compulsory functions are distinguished from optional functions. [4]
5. Explain the following basic features of the Indian Constitution:  
 a) Single Citizenship [3]  
 b) Universal Adult Franchise [3]  
 c) Fundamental Rights [4]

**SECTION - B (History)**Attempt any **three** questions from this Section.

6. With reference to the Bhakti Movement, Sufism and Christianity, answer the following questions:  
 a) How did Sufi and Bhakti movements foster the growth of Indo-Islamic culture? [3]  
 b) Mention the teachings of Kabir as mentioned in the Bijak. [3]

- [2] c) Explain the role of Christian missionaries in  
[2] promoting language, literature and art in India. [4]
7. With reference to the sources of information about the  
[2] Vedic Age, write short notes on the following :  
[2] a) The Vedas [3]  
[2] b) The Epics [3]  
[2] c) Role of Iron Implement [4]
8. Study the picture below and answer the following  
[3] questions :



- a) Who built this monument? Where is it located? State  
[3] its ceremonial importance in the present.
- b) Mention three important buildings within the fort. [3]
- c) Mention four architectural features of this fort. [4]
9. With reference to the Reformation, answer the following :  
[3] a) Mention any three Church practices that caused  
[3] dissatisfaction among the people.
- b) How did New Learning become a factor that led to  
[3] the Reformation?
- c) State the contribution of Martin Luther in reforming  
[4] the church in Europe.

## Time

Note : Your  
time is to be  
of this paper  
for question

प्रश्न-पत्र दो भागों  
केवल चार प्रश्नों के  
प्रश्न करना अनिवार्य

1. निम्नलिखित वि

250 शब्दों में संक्षि

क) काम को कल

कल करने वाले

कार्यक्षमता बढ़ती

बताइए कि एक विद्य

ख) आज का युग विज्ञापन

कि विज्ञापन हमारे जीव

ग) 'वन है तो भविष्य है', अ

हैं, कैसे? कथन को स्पष्ट

अपने विचार लिखिए।

घ) 'साँच को अ



Annual Examination - 2024-25

Class - IX

Time : 2 Hrs.

CHEMISTRY

M.M. : 80

Answers to this Paper must be written on the paper provided separately. You will not be allowed to write during first 15 minutes.

This time is to be spent in reading the question paper.

The time given at the head of this Paper is the time allowed for writing the answers. Section A is compulsory. Attempt any four questions from Section B. The intended marks for questions or parts of questions are given in brackets [ ]

SECTION - A

(Attempt all the questions from this section)

1. Choose the correct answers to the questions from the given options. (Do not copy the question, write the correct answers only.) [15]
  - a) Which of the following metals does not give hydrogen with dilute acids :
    - i) Iron
    - ii) lead
    - iii) copper
    - iv) zinc
  - b) Which of the following electronic configuration represents the most electropositive element?
    - i) 2, 1
    - ii) 2, 2
    - iii) 2, 8, 1
    - iv) 2, 8, 2
  - c) An alkali metal found in period 2 and group 1 is :
    - i) Magnesium
    - ii) Sodium
    - iii) Lithium
    - iv) Potassium
  - d) With the rise in temperature the solubility of calcium sulphate in water :
    - i) Decreases
    - ii) Increases and then decreases
    - iii) Increases sharply
    - iv) Increases only a little
  - e) Assertion (A): Alkali metals do not form dipositive ions.  
Reason (R): After loss of one electron alkali metals achieve stable electronic configuration of noble gases.
    - i) Both A and R are true and R is the correct explanation of A

[2]

- ii) Both A and R are true but R is not the correct explanation of A
- iii) A is true but R is false
- iv) A is false but R is true
- f) The temperature of 127°C is equal to
  - i) 100 K
  - ii) 273 K
  - iii) 300 K
  - iv) 400 K
- g) A gas that turns red litmus paper blue, is :
  - i) Hydrogen gas
  - ii) Ammonia gas
  - iii) Nitrogen gas
  - iv) Oxygen gas
- h) % of water of crystallization in Blue vitriol  $\text{CuSO}_4 \cdot 5\text{H}_2\text{O}$  (Cu = 64, S = 32, O = 16, H = 1) :
  - i) 250%
  - ii) 36%
  - iii) 90%
  - iv) None
- i) The molecular mass of Urea :  $(\text{NH}_2)_2\text{CO}$  (N = 14, C = 12, H = 1, O = 16) :
  - i) 61 u
  - ii) 100 u
  - iii) 60u
  - iv) 59 u
- j) A substance that does not contain water of crystallization is :
  - i) Green Vitriol
  - ii) Lead chloride
  - iii) Glauber's salt
  - iv) Washing soda crystals
- k) Assertion(A): Two electrons of Helium atom are placed in only one shell (K) but three electrons of Lithium need two shells (K,L).  
Reason(R): A shell can have maximum of  $2n^2$  electrons.
  - i) Both A and R are true and R is the correct explanation of A
  - ii) Both A and R are true but R is not the correct explanation of A
  - iii) A is true but R is false
  - iv) A is false but R is true
- l) Which is not a greenhouse gas?
  - i) Carbon monoxide
  - ii) Methane
  - iii) Nitrous oxide
  - iv) Carbon dioxide

CHEM

m

n)

o)

2. a)

b)

c)

- m) The salt that undergoes photo chemical decomposition is :  
 i) Copper sulphate    ii) Zinc carbonate  
iii) Silver nitrate    iv) None
- n) When Ammonium dichromate is heated, then the colour of the residue is :  
 i) Green    ii) Black  
iii) Yellow    iv) White
- o) For the reaction,  
 $\text{PbO} + \text{H}_2 \rightarrow \text{Pb} + \text{H}_2\text{O}$   
 Which of the following statements is wrong?  
 i)  $\text{H}_2$  is the reducing agent  
 ii)  $\text{PbO}$  is the oxidizing agent  
 iii)  $\text{PbO}$  is the oxidised to  $\text{Pb}$   
 iv)  $\text{H}_2$  is oxidised to  $\text{H}_2\text{O}$
2. a) Write the chemical formula for the following : [5]  
 i) Sodium plumbite  
 ii) Ammonium nitrate  
 iii) Calcium Phosphide  
 iv) Cuprous sulphide  
 v) Iron(III) Hydroxide
- b) Match the following Column A with Column B. [5]
- | Column A                     | Column B    |
|------------------------------|-------------|
| i) Lead oxide                | a) Black    |
| ii) Copper oxide             | b) Yellow   |
| iii) Element without neutron | c) Bromine  |
| iv) Liquid non-metal         | d) Neon     |
| v) An inert gas              | e) Hydrogen |
- c) Complete the following by choosing the correct answers from the bracket : [5]  
 i) The combining capacity of an atom is called \_\_\_\_\_ [valency / radical]  
 ii) A molecule which has double covalent bond \_\_\_\_\_ [oxygen molecule / nitrogen molecule]

I. Read the appropriate (Please do correct ser

- ii) Portia's p  
 i) Save  
 ii) Stop th  
 impend  
 iii) Speed up  
 iv) Assist her  
 b) What does Cas  
 examples of C  
 episodes?  
 i) Caesar is brav  
 ii) Caesar is prone  
 iii) Caesar is not li  
 iv) Caesar is  
 c) Th

Time : 3 Hrs.

Class - IX

HINDI

M.M. : 80

Note : You will not be allowed to write  
time is to be spent in reading the ques  
of this paper is the time allowed for

... fifteen minutes. This

26  
M.M. : 80

[4]

- iii) In Electrovalent compound, the bond is formed due to \_\_\_\_ of electrons. [Sharing / transfer]
- iv) Ammonia molecule has \_\_\_\_ lone pair of electron. [1/2]
- v) At constant Pressure, volume of a given mass of a dry gas is directly proportional to its absolute temperature is \_\_\_\_ [Boyle's law / Charles's law]
- d) Name the following : [5]
- i) A type of reaction in which heat is absorbed.
- ii) A gas which changes Pink colour solution of Potassium permanganate colourless.
- iii) A colourless and odourless gas which on passing through lime water turns milky.
- iv) A reaction in which a precipitate is formed.
- v) A reddish brown colour gas which has pungent odour.
- e) Balance the following equations : [5]
- i)  $PbS + O_2 \rightarrow PbO + SO_2$
- ii)  $C + H_2SO_4 \rightarrow CO_2 + H_2O + SO_2$
- iii)  $PbO + NH_3 \rightarrow Pb + H_2O + N_2$
- iv)  $MnO_2 + HCl \rightarrow MnCl_2 + H_2O + Cl_2$
- v)  $Pb_3O_4 + HCl \rightarrow PbCl_2 + H_2O + Cl_2$

**SECTION B (40 Marks)**

*(Attempt any four questions)*

3. a) Convert : [2]
- i)  $37^\circ C$  to K      ii) 100 k to  $^\circ C$
- b) Define : [2]
- i) Efflorescence      ii) Hygroscoy
- c) Draw the orbital structure of the following : [3]
- i)  $MgCl_2$       ii)  $CCl_4$       iii)  $NH_3$
- d) X [2, 8, 7] and Y [2, 8, 2] are two elements. Using this information complete the following: [3]
- i) \_\_\_\_ is the metallic element.

[ 5 ]

- ii) Metal atoms tend to have a maximum of \_\_\_\_\_ electrons in the outermost shell.
- iii) \_\_\_\_\_ a diatomic gas.
4. a) With regard to the preparation of hydrogen gas by Bosch process, answer these questions : [2]  
 i) Write the reaction for the preparation of water gas  
 ii) Name the solution used to remove CO gas.
- b) State one difference in each pair : [2]  
 i) Drying agent and Dehydrating agent.  
 ii) Soft water and Hard water
- c) The formula of a Phosphate of a metal M is  $MPO_4$  then write the formula of its : [3]  
 i) Acetate      ii) Sulphate      iii) Oxide
- d) For atom  ${}_{20}Ca^{40}$  find : [3]  
 i) Number of protons  
 ii) Number of neutrons  
 iii) Number of electrons in  $Ca^{2+}$
5. a)  $120\text{ cm}^3$  of a gas is taken at  $27.3\text{ K}$ . The temperature is then raised to  $0^\circ\text{C}$ . What is the new volume of the gas? The pressure is kept constant. [2]
- b) Give reason for the following : [2]  
 i) Why is nitric acid not used in the preparation of hydrogen gas?  
 ii) Why zinc granules are preferred in the preparation of hydrogen gas over pure zinc?
- c) Write the electronic configuration of : [3]  
 i) Mg      ii) Na
- d) An element Z has atomic number 16. [3]  
 i) Write its electronic configuration  
 ii) To which group does it belongs?  
 iii) What is its Valency?
6. a) Write the name of acidic and basic radical in the following compounds : [2]  
 i)  $KClO_3$       ii)  $CaSiO_3$

- iii) \_\_\_\_\_ is prone to diseases  
 iv) Caesar is not liked by people  
 c) The second citizen, a cobbler  
 i) \_\_\_\_\_ is afraid of the tw  
 ii) \_\_\_\_\_ says he us

You will not be allowed to write during the first 15 minutes to be spent in reading the question paper. The time given for writing answers is the time allowed for writing answers. Questions are given in brackets [ ].

प्र दो भागों में  
चार प्रश्नों के उत्तर  
करना अनिवार्य

निम्नलिखित

250 शब्दों में

(क) काम को

कल कर

कार्यक्षम

बताइए।

(ख) आज का

कि विज्ञान

(ग) 'वन है त

हैं, कैसे।

अपने वि

(घ) 'साँच के

कहानी

(ङ) नीचे दि

बनाकर

और स्प

[ 6 ]

- b) A gas occupies  $800 \text{ cm}^3$  under  $760 \text{ mm Hg}$  pressure. Find under what pressure the gas will occupy  $380 \text{ cm}^3$ , the temperature remaining constant. [2]
- c) What do you observe when : [3]
- Zinc nitrate is heated strongly
  - Hydrogen sulphide gas passed through lead acetate solution.
  - Iron nails are added to copper sulphate solution.
- d) Explain the term 'global warming'. State two ways by which global warming can be reduced. [3]
7. a) Write the name of the following compound : [2]
- $\text{Mg}_3\text{N}_2$
  - $\text{Na}_2\text{ZnO}_2$
- b) Atomic number of element A, B and C are 12, 17 and 20 respectively, then answer the following questions : [2]
- Number of electrons in outermost shell of A.
  - Electronic configuration of B.
- c) Identify the type of reaction : [3]
- $4\text{Fe} + 3\text{O}_2 \rightarrow 2\text{Fe}_2\text{O}_3$
  - $\text{BaCl}_2 + \text{Na}_2\text{SO}_4 \rightarrow \text{BaSO}_4 + 2\text{NaCl}$
  - $\text{NH}_4\text{Cl} \rightleftharpoons \text{NH}_3 + \text{HCl}$
- d) What is the cause of acid rain? Give any two impacts of acid rain. [3]
8. a) Define the following : [2]
- Modern Periodic Law
  - Isotopes
- b) One litre of a gas at  $10^\circ\text{C}$  is heated till both its volume and pressure are tripled. Find the new temperature. [2]
- c) Define the following term : [3]
- Oxidising agent
  - Mass number
  - Water of crystallisation
- d) Calculate the percentage of nitrogen in Ammonium hydroxide -  $\text{NH}_4\text{OH}$  [3]
- [At mass : H = 1, N = 14, O = 16]

□□□

M.M. : 50

fifteen minutes.  
The time given  
for the answers.

[30]

Self-defence?  
Start with

keep a

one's life?

[10]

'Charity'. T  
Fements. T  
our T

and T

restition. F

[10]

Time : 2 Hrs.

Annual Examination - 2024-25  
Class - IX  
CHEMISTRY

Answers to this Paper must be written separately. You will not be allowed to write during the first fifteen minutes. This time is to be spent in reading the question paper. The time given at the head of this paper is the time allowed for writing the answer.

Annual Examination - 2024-25

Class - IX

ENGLISH - II

M.M. : 80

Time : 2 Hrs.

Note:

- i) You will not be allowed to write during the first fifteen minutes. This time is to be spent in reading the question paper. The time given at the head of this paper is the time allowed for writing the answer.
- ii) Section A is compulsory- All questions in section A must be answered.
- iii) You must attempt one question from each of the sections, B, C and D and one other question from any section of your choice.
- iv) The intended marks for questions or parts of questions are given in brackets [ ].

SECTION - A

(Attempt all questions from this Section.)

1. Read the following questions and choose the most appropriate response from the choices given below (Please do not copy the question- simply write out in correct serial order the appropriate word or phrase.) [16]
  - a) Portia's prayer to the heavens is to
    - i) Save Caesar from being killed
    - ii) Stop the soothsayer from warning Caesar of his impending danger
    - iii) Speed up the enterprise of killing Caesar
    - iv) Assist her in not giving out Brutus's secret
  - b) What does Cassius convince Brutus of by giving examples of Caesar's drowning and sickness episodes?
    - i) Caesar is brave and sturdy
    - ii) Caesar is prone to diseases
    - iii) Caesar is not liked by people
    - iv) Caesar is weak and vulnerable
  - c) The second citizen, a cobbler,
    - i) is afraid of the two tribunes.
    - ii) says he uses a ruler while doing his job.

Time : 3 Hrs.

HINDI

Note : You will not be allowed to write during time is to be spent in reading the question paper of this paper is the time allowed for writing the questions are given in brackets [ ].

समय का जो भागों में बिताकर है। खण्ड 'क' के सभी

[ 2 ]

- iii) uses a pun on the word 'sole' when he speaks to the tribunes.
- iv) says that he corrects the souls of sinners.
- d) How would Brutus' joining the conspirators change their crime?
- It will give them moral support
  - It will make their group strong
  - It converts their crime into a noble act
  - None of the above
- e) How does Julius Caesar react to Calpurnia's unsettling dream?
- He pokes fun at Calpurnia's superstitiousness
  - He orders the priests to conduct sacrifices and interpret omens
  - He decides to stay home and avoid any potential danger
  - All of the above
- f) Portia: If this were true, then should I know this secret. What does Portia refer to as 'this'?
- Her being Brutus' true and honourable wife.
  - Brutus being troubled by something.
  - Her being charming and beautiful.
  - Brutus being unwell.
- g) The Night Mail does not pass through
- the fields and plain
  - grassy lands
  - the slopes
  - mango grove
- h) What is the whisper all around at 11.39?
- It is very cold.
  - Where is Skimble?
  - I want my tea.
  - How is Skimble?

Annual Examination

ENG. - II

- i) Upon seeing 'dawned on'
- He shocked
  - He needed
  - His state
  - All of the above
- j) The poet found the childh
- childhood
  - he is happy
  - he is dislik
  - he was
- k) Why did the
- To keep
  - To stiff
  - To gift
  - To pro
- l) Which figur
- servant was
- Irony
  - Simile
- m) Who said th
- "Let's not ta
- going arou
- Bonku
  - Nidhu
- n) What is Mr
- chef
  - warden
- o) Laura Mert
- major
  - D.M

- i) Upon seeing the fire spring up from dust what 'dawned on' the doctor?
- He should go to the hospital
  - He needed help
  - His staff needed help
  - All of the above
- j) The poet felt the need to make a contrast between the childhood days and adult life because:
- childhood was a perfect time.
  - he is happier as an adult.
  - he disliked his childhood days.
  - he was forced to do so.
- k) Why did the gardener limit the bonsai tree's growth?
- To keep it tidy and beautiful
  - To stifle its growth
  - To gift it to someone
  - To protect the trees from wind
- l) Which figure of speech is used in the line 'The servant was the master on this occasion'?
- Irony
  - Alliteration
  - Simile
  - Metaphor
- m) Who said the following statement?  
"Let's not talk of Satellites. After all it's a machine, going around the earth, they say."
- Bonku Babu
  - Ram Kanai
  - Nidhu Babu
  - Chandi Babu
- n) What is Mr. Sowerberry's profession?
- chef
  - coffin maker
  - warden
  - gateman
- o) Laura Merton is a daughter of a retired \_\_\_\_\_
- major
  - captain
  - D.M
  - colonel

Time : 2 Hrs.

Note : You will not be allowed to be spent in reading the question Paper is the time allowed for Attempt any four Questions from or parts of questions are given

(Attempt all the)

1. Choose the correct

- Which of the following is not a type of tooth?
  - Molars
  - Premolars
  - Peritonium
  - Periosteum
- The external surface of the stomach is called :
  - Peritonium
  - Periosteum
  - Typhoid is caused by
    - Housefly
    - Virus
- Assertion (A) : Connective tissue is more than one type of tissue. Reason (R): Vascular connective tissue is a complex tissue.
  - A is True and R is False
  - A is False and R is True
  - Both A and R are True
  - Both A and R are False
- Perianth is the collection of
  - Sepals
  - Bracts
- Principal heat regulating centre in the brain is
  - Heart
  - Hypothalamus
- The visible part of the flower is
  - Hair bulb
  - Hair papilla

Questions are given in bra  
प्रश्न-पत्र दो भागों में विभक्त है। ख  
केवल चार प्रश्नों के उत्तर देने हैं। स  
प्रश्न करना अनिवार्य है।

1. निम्नलिखित विषयों में से  
250 शब्दों में संक्षिप्त

Annual Exam  
Class  
CHEM  
Time : 2 Hrs.  
Answers to this Paper must  
separately. You will not  
This time is to be

[ 4 ]

- nathu  
p) In the story 'The Boy who Broke the Bank ' why  
was Sitaram annoyed?  
i) Because the bank refused to pay him extra 2  
rupees a month  
ii) Because the bank had not paid his salary  
iii) Both (i) and (ii)  
iv) None of the above

**SECTION B - DRAMA**  
[Shakespeare: Julius Caesar]

(Answer one or more questions from this Section.)

2. Read the extract given below and answer the  
questions that follow :

**Brutus**

Cassius, Be not deceived: if I have veil'd my look,  
I turn the trouble of my countenance  
Merely upon myself. Vexed I am  
Of late with passions of some difference,  
Conceptions only proper to myself.

- a) Where are Brutus and Cassius at this time? What is  
the occasion? [3]  
b) What has Cassius told Brutus regarding the latter's  
attitude towards him? [3]  
c) What reason does Brutus give to Cassius for not  
going to the games? With whom does Brutus  
compare himself to? [3]  
d) What does Brutus tell Cassius regarding his  
conflicting thoughts and emotions? What effects are  
they having on Brutus regarding his attitude towards  
others? [3]  
e) What is Cassius' motive in showing his friendship  
with Brutus? How is Cassius shown to be a  
schemer? [4]

3. Rea  
que  
Dec  
If yo  
The  
Apt  
"Bro  
Who  
If C  
"Lo,  
Caes  
How  
I am  
Give  
a)  
b)  
c)  
d)  
e)  
(Ans  
4. Read  
"The  
that  
To m  
was L

[ 5 ]

3. Read the extract given below and answer the questions that follow :

**Decius**

If you shall send them word you will not come;  
Their minds may change. Besides, it were a mock  
Apt to be render'd, for someone to say,  
"Break up the Senate till another time,  
When Caesar's wife shall meet with better dreams."  
If Caesar hide himself, shall they not whisper.  
"Lo, Caesar is afraid"?

**Caesar**

How foolish do your fears seem now, Calpurnia!  
I am ashamed I did yield to them.

Give me my robe, for I will go:

- a) What had Decius assured Caesar that the Senate were proposing to do on that particular day? Why? [3]
- b) When was a similar thing already offered and what was the reaction of Caesar at that time? [3]
- c) What interpretation had Decius offered to Calpurnia's dream? What was his motive? [3]
- d) Earlier in the play, Caesar himself had expressed, once to Antony and once to Calpurnia, other thoughts on the topic of fear. Describe as closely as you can anyone of the things he says about fear. [3]
- e) Explain in your own words the meaning of the phrase "it were a mock/Apt to be render'd." What is revealed of Decius' character in the passage? [4]

**SECTION C - PROSE**

[Treasure Chest]

(Answer one or more questions from this Section.)

4. Read the extract below from Oscar Wilde's story "The Model Millionaire" and answer the questions that follow :

To make matters worse, he was in love. The girl he loved was Laura Merton, the daughter of a retired Colonel who

Time : 2 Hrs.

Note : You will not be allowed to be spent in reading the question paper is the time allowed for attempt any four Questions from any parts of questions are given.

(Attempt all the questions choose the correct option) Which of the following

- i) Molars
- ii) Premolars
- iii) external surface of bone
- iv) Peritonium
- v) Periosteum
- vi) vid is caused by :
- vii) usefly
- viii) is
- ix) ii) Ba
- x) iv) Non

(A) : Complex tissues a type of cell. Vascular tissues in plant.

and R is False  
and R is True  
R are True  
R are False

lective term for a group ii) Tepals iv) Petals

- f) Bracts
- g) Principal heat regulating centre of our body
- h) Heart
- i) Hypothalamus
- ii) Skin
- iii) The visible part of the hair is :
- iv) Lungs
- v) Hair bulb
- vi) Hair papilla
- vii) ii)

had lost his temper and his digestion in India, and had never found either of them again. Laura adored him, and he was ready to kiss her shoe-strings. They were the handsomest couple in London, and had not a penny-piece between them. The Colonel was very fond of Hughie, but could not hear of any engagement.

- a) How did 'he' look? Describe his appearance. [3]
- b) Which two things did Colonel lose in India? [3]
- c) What was the hindrance in Hughie's engagement with Laura? [3]
- d) The Colonel was fond of Hughie. Still he did not allow him to marry his daughter. Why? [3]
- e) Which sentence in the passage shows that 'he' was madly in love with Laura? Explain. [4]

**5. Read the extract given below from Rabindra Nath Tagore's story 'The Homecoming' and answer the questions that follow :**

For a boy of fourteen his own home is the only Paradise. To live in a strange house with strange people is little short of torture, while the height of bliss is to receive the kind looks of women, and never to be slighted by them.

It was anguish to Phatik to be the unwelcome guest in his aunt's house, despised by this elderly woman, and slighted, on every occasion. If she ever asked him to do anything for her, he would be so overjoyed that he would overdo it; and then she would tell him not to be so stupid, but to get on with his lessons.

- a) What happens if a boy of fourteen is continuously scolded? [3]
- b) What is the height of bliss for a boy of fourteen? [3]
- c) How did Phatik feel in the house of his uncle? [3]
- d) How did Phatik react whenever his aunt asked him to do something? [3]
- e) How is a boy of fourteen a big nuisance? [4]

M.M. : 80

er must be written on the paper provided  
t be allowed to write during first 15 minutes.  
in reading the question paper.  
d of this Paper is the time allowed for writing  
s compulsory. Attempt any four questions  
ed marks for questions or parts of

[7]

### SECTION - D (POETRY)

#### [Treasure Chest]

(Answer one or more questions from this Section.)

6. Read the extract given below from the poem 'A Doctor's Journal Entry for August 6, 1945' and answer the questions that follow :

She did not wish to, but in our distress  
What choice had we? A dreadful loneliness  
Came over me when she had gone. My mind  
Ran at high speed, my body crept behind.  
I saw the shadowy forms of people, some  
Were ghosts, some scarecrows, all were wordless dumb-  
Arms stretched straight out, shoulder to dangling hand;  
It took some time for me to understand  
The friction on their burns caused so much pain.

- a) Why was the doctor's wife reluctant to leave him? [3]  
b) 'My mind/Ran at high speed, my body crept behind'.  
Explain. [3]  
c) How did people look like? What had happened to them? [3]  
d) Why were some people moving with stretched hands? [3]  
e) What common thing among the victims was noticed by the doctor on his way to the hospital? [4]

7. Read the extract given below from T. S Eliot's poem 'The skimbleshank's and answer the questions that follow :  
But you saw him at Dumfries, where he speaks to the police  
If there's anything they ought to know about:  
When you get to Gallowgate there you do not have to wait-  
For Skimbleshanks will help you to get out!  
He gives you a wave of his long brown tail  
Which says: "I'll see you again!"

Annual Examination  
Class -  
BIOLOGY

SECTION -  
Correct option :  
the following teeth is

- ii) Incisor  
iv) Canine  
surface of bone is covered by :  
ii) Pericardium  
iv) None of these

ii) Bacteria  
iv) None of these  
plex tissues are made of  
tissues in plants

False  
True  
e  
e  
m for a group  
Tepals  
Petals

- iii) Hypothalamus  
g) The visible part of the hair is :  
i) Hair bulb  
iii) Hair papilla  
ii) Skin  
iv) Lungs  
ii) Hair follicle

You will not be  
time is to be spent in  
of this paper is the time  
for questions are given  
प्रश्न पत्र की भाषा में दिए  
केवल चार प्रश्नों के उत्तर  
प्रश्न करना अनिवार्य है।

1. निम्नलिखित कि  
250 शब्दों में शी

Annual Examination -  
Class - IX  
CHEMISTRY

Time : 2 Hrs.

Answers to this Paper must be written on  
separately. You will not be allowed to write down  
This time is to be spent in reading the question  
The time given at the head of this Paper is the time  
the answers. Section A is compulsory. Attempt  
from Section B. The intended marks for questions  
are given in brackets.

[ 8 ]

You'll meet without fail on the Midnight Mail  
The Cat of the Railway Train."

- a) What does Skimble do at Dumfries station? Why? [3]
- b) When do you think the train reaches its destination?  
Name the first and last stations of the Midnight Mail. [3]
- c) Why do the passengers not have to wait to get down  
at Gallowgate? [3]
- d) How does Skimble bid goodbye to the passengers?  
What does the wave of this long brown tail mean? [3]
- e) Once the passengers fall asleep what does the  
railway cat do? [4]

□□□

ON - A  
ons from this s  
to the question  
y the question.  
metals does  
lead  
zinc  
retroic config  
sitive element  
2  
, 8, 2  
d 2 and group  
lithium  
assium  
olubility of calc.

form dipositive  
ctron alkali m  
on of noble gas  
is the correct

Annual Examination - 2024-25

Class - IX

BIOLOGY

M.M. : 80

Time : 2 Hrs.

Note : You will not be allowed to write during first 15 minutes. This time is to be spent in reading the question paper. The time given at the head of this Paper is the time allowed for writing the answers. Section A is compulsory. Attempt any four Questions from Section B The intended marks for questions or parts of questions are given in brackets [ ].

SECTION - A

[40]

(Attempt all the questions from this section)

J. Choose the correct option :

[1×15=15]

- a) Which of the following teeth is bicuspid?  
i) Molars                      ii) Incisors  
iii) Premolars                iv) Canines
- b) The external surface of bone is covered by a membrane called :  
i) Peritonium                ii) Pericardium  
iii) Periosteum               iv) None of these
- c) Typhoid is caused by :  
i) Housefly                    ii) Bacteria  
iii) Virus                        iv) None of the above
- d) Assertion (A) : Complex tissues are made up of more than one type of cell.  
Reason (R) : Vascular tissues in plants are a type of complex tissue.  
i) A is True and R is False  
ii) A is False and R is True  
iii) Both A and R are True  
iv) Both A and R are False
- e) Perianth is the collective term for a group of :  
i) Sepals                        ii) Tepals  
iii) Bracts                        iv) Petals
- f) Principal heat regulating centre of our body :  
i) Heart                         ii) Skin  
iii) Hypothalamus            iv) Lungs
- g) The visible part of the hair is :  
i) Hair bulb                    ii) Hair follicle  
iii) Hair papilla                iv) Hair shaft

- h) The type of joint found at shoulder is also found at  
 i) Elbow                      ii) Knee  
 iii) Ankle                     iv) Hip
- i) The part of the flower that gives rise to the fruit is  
 i) Sepals                      ii) Petals  
 iii) Ovary                     iv) Stamens
- j) A biology teacher asked her students to give two examples of vestigial organs in the human body.  
 i) Raj said: Wisdom teeth and Pinna  
 ii) Sonu said: Body hair and large intestine  
 iii) Lata said: Vermiform appendix and wisdom teeth  
 iv) Abhay said : Pinna and Ossicles  
 Who were correct?  
 a) Abhay and Sonu    b) Sonu and Lata  
 c) Raj and Lata        d) Abhay and Raj
- k) Plant cell has a cell wall made of  
 i) Protein                      ii) Fructose  
 iii) Cellulose                iv) Fatty acids
- l) The basic structural and functional unit of a lung is :  
 i) Capillaries                ii) Alveolus  
 iii) Bronchioles            iv) Bronchi
- m) WHO headquarters is located in  
 i) Paris                        ii) Geneva  
 iii) Berlin                    iv) New York
- n) Assertion (A): Muscles can only pull on structures not push.  
 Reason (R): Skeletal muscles are often arranged in pairs that pull bones in opposite directions.  
 i) A is True and R is False  
 ii) A is false and R is true  
 iii) Both A and R are True  
 iv) Both A and R are False
- o) During a practical exam, a maize grain was kept on the table. Students were told to observe the grain and name the cotyledon and mention the type of seed.



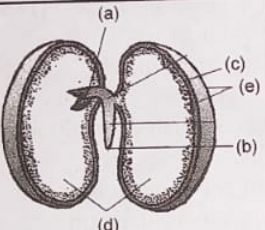
- i) Coleoptile  
 ii) Scutellum  
 iii) Endosperm  
 iv) Coleorhiza
2. a) Name the following  
 i) Transport tissue  
 ii) Arrangement of xylem  
 iii) Process of photosynthesis  
 iv) Bacteria which fix nitrogen  
 v) Name the tissue which causes aerenchyma formation
- b) Arrange and name the following in correct order beginning with 'G'  
 i) Snake, Grasshopper  
 ii) Larynx, Cilia  
 iii) Cyton, Axon  
 iv) Annelida, Earthworm  
 v) Zygote, Embryo
- c) Given below is a diagram of a flower (front). Read it and fill in the

**Girdles** are the structures that support the limb bones. The pectoral girdle is not only for the forelimb but also for the trunk. The hip or pelvic girdle is formed by (a)            (b)           . Each girdle has a (c)           . On each side of the particular cavity is the (d)            head of the (e)



[ 4 ]

- d) Read the explanation given below and name the structure : [1×5=5]
- i) The largest gland in the human body that secretes bile.
  - ii) A cell formed by the fusion of gametes.
  - iii) A large hole at the back of cranium through which the spinal cord emerges out.
  - iv) Prevents food from entering the trachea during swallowing.
  - v) Protects the lungs from mechanical injuries.
- e) Given below is the structure of bean seed. Match the structures marked (a) to (e) with their correct functions : [5]

Structure of bean seed	Functions
	<ol style="list-style-type: none"> <li>i) Forms the root.</li> <li>ii) Forms the shoot.</li> <li>iii) Protect the seed from injury and attack of bacteria.</li> <li>iv) Contain food for the embryo and protect it.</li> <li>v) Inner layer also protective in nature</li> </ol>

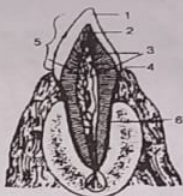
**SECTION - B**

[40]

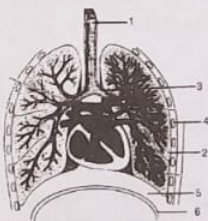
*(Attempt any four questions)*

3.
  - a) Define Respiration. [1]
  - b) Why does gaseous exchange continue in the lungs even during expiration. [2]
  - c) Differentiate between Glycolysis and Krebs's Cycle. [2]
  - d) What are bracts? State their function. [2]
  - e) Draw a well labelled diagram of intestinal villus. [3]
4.
  - a) Define Malnutrition. [1]
  - b) Name the nutrients whose deficiencies cause Night blindness and Goitre disease. [2]
  - c) Differentiate between Vasoconstriction and Vasodilation. [2]
  - d) Name the causative germ of Tuberculosis. How is this disease transmitted. [2]
  - e) Draw a neat and labelled diagram of nerve cell. [3]

5. a) Define Antibodies. [1]  
 b) How is the liver an important organ in our body? [2]  
 c) Why are cells of small size? [2]  
 d) What is the role played by the hypocotyl in epigeal germination? [2]  
 e) Observe the diagram and answer the following questions. [3]



- i) Name the parts labelled 1-6.  
 ii) Identify the tooth and give a reason to support your answer.
6. a) Define Albinism. [1]  
 b) Landfills are coming up fast near large cities. Give reason. [2]  
 c) Differentiate between ileum and ilium. [2]  
 d) Why is it difficult to analyse protoplasm chemically? [2]  
 e) Observe the diagram and answer the following questions. [3]



- i) Label the part 1 to 6.  
 ii) What are the two advantages of C - shaped cartilaginous rings found in structure.  
 iii) Name the fluid filled between the two protective layers of the organ as part 2.

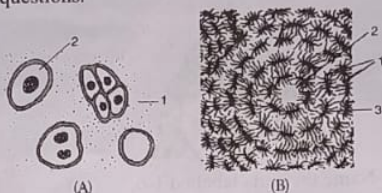
b) Calculate the frequency of oscillation?  
 pendulum. Does it depend upon amplitude?  
 c) Name the S.I. unit of force and define it.  
 d) How is and G related?  
 e) Name two greenhouse gases. Will these gases increase or decrease the average temperature of the earth?  
 f) Define linear momentum and state its S.I. unit.  
 g) Write one difference between concave and convex lenses.  
 h) Write one difference between concave and convex mirrors that are chosen.

7. a) Give reason to your answer.  
 b) A ball is thrown vertically upwards. It returns 6 sec later calculate the greatest height reached by the ball. (Take  $g = 10 \text{ms}^{-2}$ )  
 c) The initial velocity of the ball. (Take  $g = 10 \text{ms}^{-2}$ )  
 d) The initial velocity of the ball. (Take  $g = 10 \text{ms}^{-2}$ )  
 e) Can two magnetic field lines intersect each other?  
 f) Give reason to your answer.

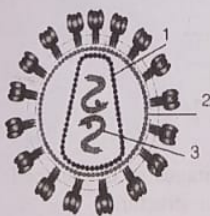
8. a) A ball is thrown vertically upwards. It returns 6 sec later calculate the greatest height reached by the ball. (Take  $g = 10 \text{ms}^{-2}$ )  
 b) The initial velocity of the ball. (Take  $g = 10 \text{ms}^{-2}$ )  
 c) Can two magnetic field lines intersect each other?  
 d) Give reason to your answer.

9. a) A ball is thrown vertically upwards. It returns 6 sec later calculate the greatest height reached by the ball. (Take  $g = 10 \text{ms}^{-2}$ )  
 b) The initial velocity of the ball. (Take  $g = 10 \text{ms}^{-2}$ )  
 c) Can two magnetic field lines intersect each other?  
 d) Give reason to your answer.

7. a) Define Tidal volume. [1]  
 b) The principle of vaccination is to produce immunity against a disease. Explain. [2]  
 c) Differentiate between Vaccination and immunisation. [2]  
 d) Name the Modified sebaceous glands present in eye and ear. [2]  
 e) Observe the diagram and answer the following questions. [3]



- i) Identify the tissues A and B.  
 ii) Label all the guidelines marked in the figures A and B.  
 iii) Mention one functional difference between A and B.
8. a) Define Fermentation. [1]  
 b) Write the full form of DPT and BCG. [2]  
 c) Differentiate between inspired air and alveolar air (CO<sub>2</sub> Content). [2]  
 d) Mention two symptoms of the disease Hepatitis. [2]  
 e) Observe the diagram and answer the following questions. [3]



- i) Name the parts labeled 1-3.  
 ii) Identify the microorganism.  
 iii) Does it cause any disease? If yes, name the disease.

□ □ □

8190471651150506792  
 M.R.S.P. ₹ : 58.00  
 HARYANA TRADERS (P) LTD.  
 4035, Chauri Bazar, Delhi-110006  
 Web : www.neelgagan.com  
 Customer Care : 011-4161494

Annual Examination - 2024-25

Class - IX

Time : 2 Hrs. COMMERCIAL APPLICATIONS M.M. : 100

Note: You will not be allowed to write during the first fifteen minutes. This time is to be spent in reading the question paper. The time given at the head of this paper is the time allowed for writing the answers. This paper is divided into two sections.

Section A is compulsory. Attempt any four questions from Section B. The intended marks for questions or parts of questions are given in the brackets [ ].

SECTION - A

[40]

(Attempt all questions from this section)

1. Choose the correct answers to the questions from the given options. (Do not copy question. Write correct answer only.) [20]
  - i) Non-economic activities does not include [1]
    - a) Parental
    - b) Business
    - c) Religious
    - d) Social
  - ii) These organisations are engaged in buying and selling of goods. [1]
    - a) Banking and Finance Companies
    - b) Transport Organisations
    - c) Trading Organisations
    - d) Manufacturing Organisations
  - iii) The ownership where individual supplies the total capital from his own wealth or from borrowed funds is : [1]
    - ~~a) Sole Proprietorship~~
    - b) Joint Hindu Family Business
    - c) General Partnership
    - d) Joint Stock Company
  - iv) How profit is distributed in Joint Hindu Family Business? [1]
    - a) Men have more share than women

- b) The older members of family receives more profit than younger members
- e) Equal shares for all of them
- d) Only the Karta has all the profit
- v) The partner who neither contributes capital nor takes part in the management of business. [1]
- a) Secret Partner     b) Limited Partner
- c) Nominal Partner    d) Working Partner
- vi) The number of members in a private company are: [1]
- a) minimum 5 and maximum 100
- b) Minimum 2 and maximum 200
- c) Marketing cooperative
- d) Bargaining cooperative
- vii) Public sector enterprises are accountable to public through : [1]
- a) parliament     b) government
- c) Public    d) None of these
- viii) Which of the following is a function of Human Resources Department? [1]
- a) Investment of Funds
- b) Training and Executive Development
- c) Dividend Policy
- d) Repairs and Maintenance
- ix) Some persons tend to form a judgement or arrive at a conclusion before receiving the complete message. This tendency is known as : [1]
- a) Perception
- b) Resistance to change
- c) Premature Evaluation
- d) Lack of mutual Trust
- x) Which method of communication is most suitable in case of emergency? [1]
- a) Written communication
- b) Spoken communication
- c) Both (i) and (ii)
- d) None of these

xi)

xii)

xiii)

xiv)

xv)

xvi)

xvii)

xviii)

- xi) A \_\_\_\_\_ is used for internal communication between executives and subordinates. [1]  
a) letter                      b) Memo  
c) email                        d) fax
- xii) \_\_\_\_\_ means anything which will enable the firm to get a cash or benefit in future. [1]  
a) Asset                        b) Capital  
c) Liability                    d) None of these
- xiii) Which of the following is not called books of original entry? [1]  
a) Journal                      b) Cashbook  
c) Sales return book        d) None of these
- xiv) The process of recording transactions from the journal into classified accounts in the Ledger is called : [1]  
a) Transferring                b) Posting  
c) Ledgering                    d) None of these
- xv) Soil is formed by the decomposition of rocks and mineral. This formation process is called: [1]  
a) Soilination                 b) Rocking  
c) Weathering                 d) None of these
- xvi) Of the total water in the world, about 97% is [1]  
a) Fresh water                 b) ice caps and glaciers  
c) salty water                  d) None of these
- xvii) LPG stands for [1]  
a) Liquified Petroleum gas  
b) Liquid Petrol gas  
c) Lazy petrol gas  
d) None of these
- xviii) Control of gaseous contaminants can be done through [1]  
a) Combustion                 b) Absorption  
c) Adsorption                  d) All of these

xix) Statement I : Owners need accounting information to know the profitability and financial soundness of their investment. [1]

Statement II : Creditors require accounting information to assess the credit worthiness and repaying capacity of the firm .

- a) Only I is correct  
 b) Only II is correct  
 c) Both I and II are correct  
 d) Both I and II are wrong

xx) Read the statements carefully and choose the correct option. [1]

Assertion : A telephone communication is a talk between two persons.

Reason : Telephonic communication can provide immediate feedback.

- a) Both Assertion and reason are true and Reason is the correct explanation of Assertion.  
 b) Both Assertion and Reason are true but Reason is not the correct explanation of the Assertion.  
 c) Assertion is true and Reason is false.  
 d) Both Assertion and Reason are False.

2. a) Distinguish between : [10]

- i) Secret Partner and Sleeping Partner.  
 ii) Book-keeping and Accountancy.

b) Justify the following statements :

- i) Entrepot trade involves both import and export.  
 ii) Oral communication is more economical than written communication.

iii) Partnership is more stable than sole proprietorship.

3. Answer the following questions : [10]

- a) What is meant by the term departmentation?  
 b) Explain the principle of 'one man one vote' in the context of cooperative societies.

*is the process of governing tasks into jobs responsibility to*

- c) Wh  
 d) Wh  
 e) Wh  
 stock

(Ans)

4. a) Exp  
 b) Wh  
 c) "A J  
 org

5. a) Des  
 b) Dis  
 ent  
 c) WH

6. a) Ex  
 be  
 b) W  
 ad  
 c) W  
 th

7. a) D  
 b) D  
 c) E  
 D  
 D

8. a) E  
 b) D  
 c) W  
 m

9. Read  
 quest  
 Gopal

819041651506792

(Product of all times)  
**HARYANA TRADE**  
 4035, Chawri Bazar,  
 Web : www.nete  
 Customer Care :

- c) What is a multinational company?  
 d) What is meant by economic activities?  
 e) What do you mean by perpetual succession in a joint stock company?

## SECTION - B

[60]

(Answer any four questions from this Section.)

4. a) Explain any five merits of sole proprietorship. [5]  
 b) What is partnership deed? State its contents. [5]  
 c) "A Joint Stock Company is the best form of business organisation." Do you agree? Give reasons. [5]
5. a) Describe various types of cooperative societies. [5]  
 b) Distinguish between public sector and private sector enterprises. [5]  
 c) What is a statutory corporation? Discuss any three features of it. [5]
6. a) Explain three main purposes for which water can be utilised. [5]  
 b) What is the meaning of recycling? What are the advantages of recycling? [5]  
 c) What are non-conventional energy resources? How these resources help in saving energy? [5]
7. a) Discuss the need and relevance of accounting. [5]  
 b) Distinguish between Ledger and Journal. [5]  
 c) Explain the functions of the Human Resources Department in a large business firm. [5]
8. a) Explain the process of communication. [5]  
 b) Discuss various advantages of oral communication. [5]  
 c) What is e-mail? Why has it become a popular method of communication? [5]

## Case Study

9. Read the passage carefully and answer the following questions.

Gopaldas, in order to promote local craftsmen of Gujarat,

Hunichyanshi D

Annual Examination - 20

Class - IX

HISTORY & CIVICS

Time : 2 Hrs.

Note: You will not be allowed to write during the  
This time is to be spent in reading the question paper

9-COMM.

[ 6 ]

formed an organisation where in the persons voluntarily associate them to promote common economic interest. The basic purpose of this organisation was to help these craftsmen to find market for their products. It had a managing committee that was elected on the basis of "one member, one vote" .

- a) Identify and define the form of business organisation set up by Gopaldas. [5]
- b) Quoting the line from the above passage, enlist any three features of this form of organisation. [5]
- c) Enlist any three merits of this form of organisation. [5]

□□□

Pages : 48  
M.R.S.P. ₹ : 58.00  
(Purchase of all items)  
HARVANA TRADERS (P) LTD.