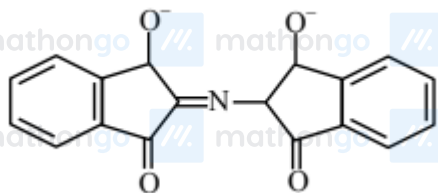


Questions with Answer Keys

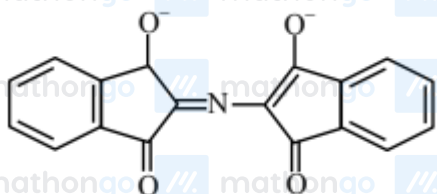
MathonGo

Q1 (20 July 2021 Shift 1)

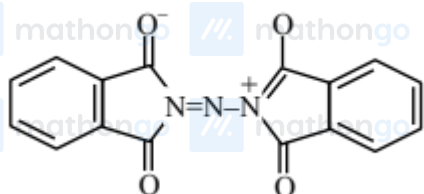
The correct structure of Rhumann's Purple, the compound formed in the reaction of ninhydrin with proteins is:



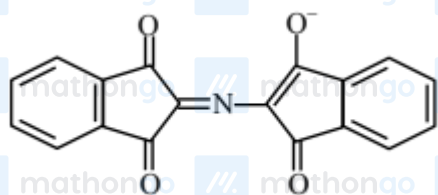
(1)



(2)



(3)



(4)

Q2 (20 July 2021 Shift 1)

Identify the incorrect statement from the following

- (1) Amylose is a branched chain polymer of glucose
- (2) Starch is a polymer of α -D glucose
- (3) β -Glycosidic linkage makes cellulose polymer
- (4) Glycogen is called as animal starch

Q3 (22 July 2021 Shift 1)

Thiamine and pyridoxine are also known respectively as:

#MathBoleTohMathonGo

Questions with Answer Keys

MathonGo

(1) Vitamin B₂ and Vitamin E

(2) Vitamin E and Vitamin B₂

(3) Vitamin B₆ and Vitamin B₂

(4) Vitamin B₁ and Vitamin B₆

Q4 (25 July 2021 Shift 1)

The water soluble protein is

(1) Fibrin

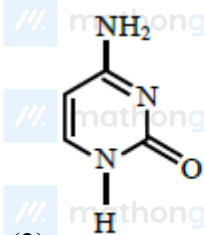
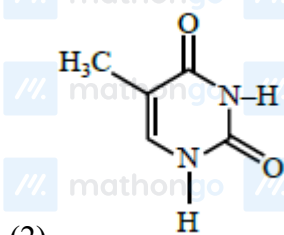
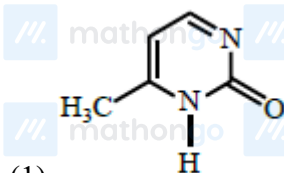
(2) Albumin

(3) Myosin

(4) Collagen

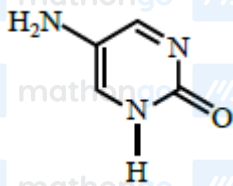
Q5 (25 July 2021 Shift 2)

Which one of the following is correct structure for cytosine ?



Questions with Answer Keys

MathonGo



(4)

Q6 (27 July 2021 Shift 1)

Which one among the following chemical tests is used to distinguish monosaccharide from disaccharide ?

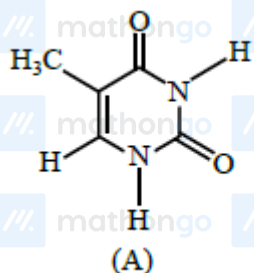
(1) Seliwanoff's test

(2) Iodine test

(3) Barfoed test

(4) Tollen's test

Q7 (27 July 2021 Shift 1)



The compound 'A' is a complementary base of in DNA stands.

(1) Uracil

(2) Guanine

(3) Adenine

(4) Cytosine

Q8 (27 July 2021 Shift 2)

Compound A gives D-Galactose and D-Glucose on hydrolysis. The compound A is :

Hints and Solutions

MathonGo

Q1



Ninhydrin Test

Q2

Amylose is a linear chain polymer of α -D-glucose while amylopectine is branched chain polymer of α -D-glucose.

Q3

Vitamine- B₁ is also known as Thiamine while vitamin B-6 is known as Pyridoxine

Q4

Sol. Albumin is water soluble.

Q5

The correct structure of cytosine



