

Questions

MathonGo

Q1 - 25 July - Shift 1

Drugs used to bind to receptors, inhibiting its natural function and blocking a message are called :

- (A) Agonists
- (B) Antagonists
- (C) Allosterists
- (D) Anti histaminists

Space for your notes:

Q2 - 25 July - Shift 2

Match List I with List II.

List-I		List-II	
A.	Sulphate	I.	Pesticide
B.	Fluoride	II.	Bending of bones
C.	Nicotine	III.	Laxative effect
D.	Sodium arsinite	IV.	Herbicide

Space for your notes:

Choose the correct answer from the options given below:

- (A) A-II, B-III, C-IV, D-I
- (B) A-IV, B-III, C-II, D-I
- (C) A-III, B-II, C-I, D-IV
- (D) A-III, B-II, C-IV, D-I

Q3 - 25 July - Shift 2

Some drugs bind to a site other than, the active site of an enzyme. This site is known as

- (A) non-active site
- (B) allosteric site
- (C) competitive site
- (D) therapeutic site

Space for your notes:

#MathBoleTohMathonGo

Questions

MathonGo

Q4 - 26 July - Shift 1

Stearic acid and polyethylene glycol react to form which one of the following soap/s detergents ?

- (A) Cationic detergent (B) Soap
(C) Anionic detergent (D) Non-ionic detergent

Space for your notes:

Q5 - 26 July - Shift 2

How many of the following drugs is/are example(s) of broad spectrum antibiotic ?

Ofloxacin, Penicillin G, Terpineol, Salvarsan

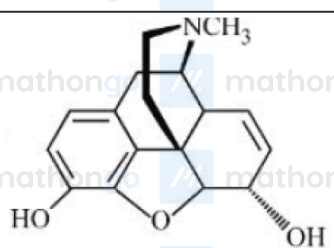
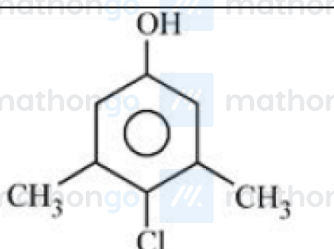
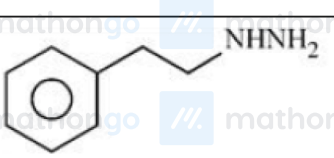
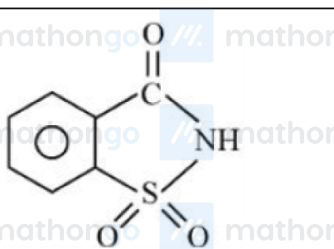
Space for your notes:

Q6 - 27 July - Shift 1

#MathBoleTohMathonGo

Match List I with List II

Space for your notes:

List I	List II
A. 	I. Anti-depressant
B. 	II. 550 times sweeter than cane sugar
C. 	III. Narcotic analgesic
D. 	IV. Antiseptic

Choose the correct answer from the options given below:

- (A) A-IV, B -III, C-II, D-I
 (B) A-III, B -I, C-II, D-IV
 (C) A-III, B -IV, C-I, D-II
 (D) A-III, B -I, C-IV, D-II

Q7 - 27 July - Shift 2

Questions

MathonGo

Which of the following enhances the lathering property of soap?

- (A) Sodium stearate
- (B) Sodium carbonate
- (C) Sodium rosinate
- (D) Trisodium phosphate

Space for your notes:

Q8 - 28 July - Shift 2

Two statements in respect of drug-enzyme interaction are given below

Statement I : Action of an enzyme can be blocked only when an inhibitor blocks the active site of the enzyme.

Statement II : An inhibitor can form a strong covalent bond with the enzyme.

In the light of the above statements. Choose the *correct* answer from the options given below

- (A) Both Statement I and Statement II are true
- (B) Both Statement I and Statement II are false
- (C) Statement I is true but Statement II is false
- (D) Statement I is false but Statement II is true

Space for your notes:

Q9 - 29 July - Shift 2

The number of chlorine atoms in bithionol is _____.

Space for your notes:

#MathBoleTohMathonGo

Questions

MathonGo

// mathongo // mathongo // mathongo // mathongo // mathongo // mathongo

Answer Key

// mathongo // mathongo // mathongo // mathongo // mathongo // mathongo

Q1 (B)**Q2 (C)****Q3 (B)****Q4 (D)**

// mathongo // mathongo // mathongo // mathongo // mathongo // mathongo

Q5 (1)**Q6 (C)****Q7 (C)****Q8 (D)**

// mathongo // mathongo // mathongo // mathongo // mathongo // mathongo

Q9 (4)

// mathongo // mathongo // mathongo // mathongo // mathongo // mathongo

// mathongo // mathongo // mathongo // mathongo // mathongo // mathongo

// mathongo // mathongo // mathongo // mathongo // mathongo // mathongo

// mathongo // mathongo // mathongo // mathongo // mathongo // mathongo

// mathongo // mathongo // mathongo // mathongo // mathongo // mathongo

// mathongo // mathongo // mathongo // mathongo // mathongo // mathongo

// mathongo // mathongo // mathongo // mathongo // mathongo // mathongo

// mathongo // mathongo // mathongo // mathongo // mathongo // mathongo

// mathongo // mathongo // mathongo // mathongo // mathongo // mathongo

// mathongo // mathongo // mathongo // mathongo // mathongo // mathongo

// mathongo // mathongo // mathongo // mathongo // mathongo // mathongo

// mathongo // mathongo // mathongo // mathongo // mathongo // mathongo

// mathongo // mathongo // mathongo // mathongo // mathongo // mathongo

// mathongo // mathongo // mathongo // mathongo // mathongo // mathongo

// mathongo // mathongo // mathongo // mathongo // mathongo // mathongo

// mathongo // mathongo // mathongo // mathongo // mathongo // mathongo

#MathBoleTohMathonGo

Q1 (B)

Factual

Q2 (C)

A-Sulphate – III (Laxative effect)

B-Fluoride – II (Bending of bones)

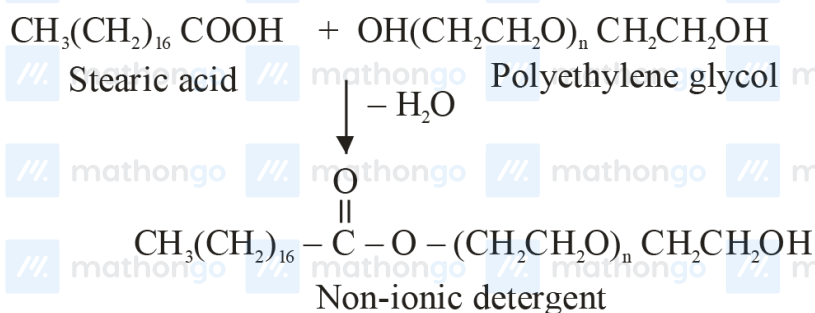
C-Nicotine – I (pesticides)

D-Sodium Arsinite – IV (herbicide)

Q3 (B)

Theoretical

Q4 (D)



Q5 (1)

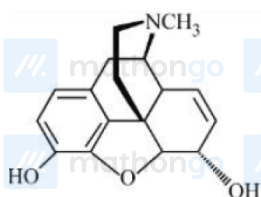
Ofloxacin

Q6 (C)

Hints and Solutions

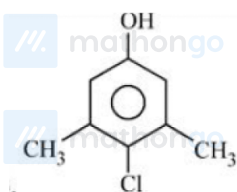
MathonGo

(A)



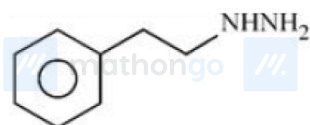
It is morphine use for relief for pain, known for narcotic analgesic

(B)



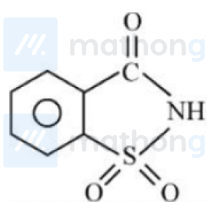
Chloroxylenol used as an antiseptic

(C)



Phenelzine (Nardil) use as Antidepressant

(D)



Saccharin 550 times sweeter than cane sugar

Q7 (C)

Rosin is added to soaps which forms sodium rosinate which lathers well.

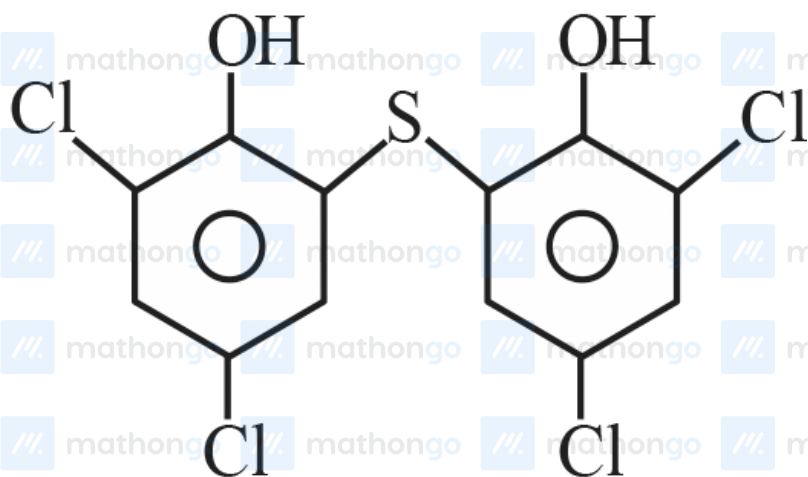
Q8 (D)

#MathBoleTohMathonGo

Some drugs do not bind to active sites. These bind to different site of enzyme called allosteric sites.

Q9 (4)

Bithinol



Chlorine atoms = 4