

Q1 JEE Main 2020 - 2 September (Evening)

If you spill a chemical toilet cleaning liquid on your hand, your first aid would be

- (A) aqueous NaOH
- (B) aqueous NaHCO_3
- (C) aqueous NH_3
- (D) vinegar

Q2 JEE Main 2020 - 3 September (Morning)

The antifertility drug Novestrol" can react with

- (A) Br_2 / water; ZnCl_2 /HCl; FeCl_3
- (B) ZnCl_2 /HCl; FeCl_3 ; Alcoholic HCN
- (C) Br_2 / water; ZnCl_2 /HCl; NaOCl
- (D) Alcoholic HCN; NaOCl ; ZnCl_2 /HCl

Q3 JEE Main 2020 - 3 September (Evening)

Match the following drugs with their therapeutic actions

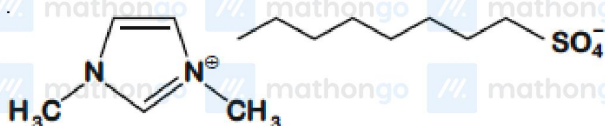
- | | |
|------------------------------------|--------------------|
| (i) Ranitidine | (a) Antidepressant |
| (ii) Nardil
(Phenelzine) | (b) Antibiotic |
| (iii) Chloramphenicol | (c) Antihistamine |
| (iv) Dimetane
(Brompheniramine) | (d) Antacid |
| | (e) Analgesic |

- (A) (i) – (d); (ii) – (c); (iii) – (a); (iv) – (e)
- (B) (i) – (d); (ii) – (a); (iii) – (b); (iv) – (c)
- (C) (i) – (e); (ii)-(a); (iii)-(c); (iv)-(d)
- (D) (i) – (a); (ii) – (c); (iii) – (b); (iv) – (e)

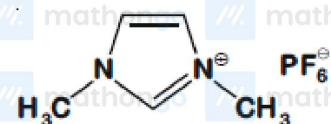
Q4 JEE Main 2020 - 3 September (Evening)

An ionic micelle is formed on the addition of

- (A) excess water to liquid



- (B) excess water to liquid



- (C) sodium stearate to pure toluene
(D) liquid diethyl ether to aqueous NaCl solution

Q5 JEE Main 2020 - 4 September (Evening)

The mechanism of action of Terfenadine" (Seldane) is:

- (A) Activates the histamine receptor
(B) Helps in the secretion of histamine
(C) Inhibits the secretion of histamine
(D) Inhibits the action of histamine receptor

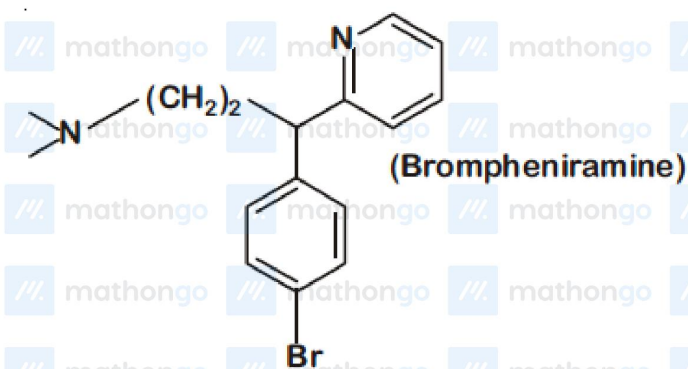
Q6 JEE Main 2020 - 5 September (Morning)

If a person is suffering from the deficiency of nor-adrenaline, what kind of drug can be suggested?

- (A) Analgesic
(B) Antidepressant
(C) Anti-inflammatory
(D) Antihistamine

Q7 JEE Main 2020 - 5 September (Evening)

The following molecule acts as an



- (A) Anti-depressant
- (B) Antiseptic
- (C) Anti-bacterial
- (D) Anti-histamine

Answer Key

Q1 (D)

Q2 (A)

Q3 (B)

Q4 (A)

Q5 (D)

Q6 (B)

Q7 (D)