

JEE Mains 2019 Chapter wise Question Bank

Chemistry in Everyday Life - Questions

Q1

The correct match between Item-I and Item-II is:

Item-I (drug)	Item-II (test)
A Chloroxylenol	P Carbylamine test
B Norethindrone	Q Sodium hydrogencarbonate test
C Sulphapyridine	R Ferric chloride test
D Penicillin	S Bayer's test

(1) A → R ; B → P ; C → S ; D → Q
 (2) A → Q ; B → S ; C → P ; D → R
 (3) A → R ; B → S ; C → P ; D → Q
 (4) A → Q ; B → P ; C → S ; D → R

9 Jan Morning

Q2

The correct match between item (I) and item (II) is :

Item - I	Item - II
(A) Norethindrone	(P) Antibiotic
(B) Ofloxacin	(Q) Antifertility
(C) Equanil	(R) Hypertension
	(S) Analgesics

(1) (A) → (Q); (B) → (R); (C) → (S)
 (2) (A) → (Q); (B) → (P); (C) → (R)
 (3) (A) → (R); (B) → (P); (C) → (S)
 (4) (A) → (R); (B) → (P); (C) → (R)

11 Jan Morning

Q3

The correct match between Item I and Item II is:

Item I	Item II
(A) Allosteric effect	(P) Molecule binding to the active site of enzyme
(B) Competitive inhibitor	(Q) Molecule crucial for communication in the body
(C) Receptor	(R) Molecule binding to a site other than the active site of enzyme
(D) Poison	(S) Molecule binding to the enzyme covalently

- (1) (A) → (R); (B) → (P); (C) → (Q); (D) → (S)
 (2) (A) → (P); (B) → (R); (C) → (Q); (D) → (S)
 (3) (A) → (R); (B) → (P); (C) → (S); (D) → (Q)
 (4) (A) → (P); (B) → (R); (C) → (S); (D) → (Q)

11 Jan Evening

Q4

The correct statement(s) among I to III with respect to potassium ions that are abundant within the cell fluids is/are:

- I. They activate many enzymes
 II. They participate in the oxidation of glucose to produce ATP
 III. Along with sodium ions, they are responsible for the transmission of nerve signals
- (1) I and II only (2) I and III only
 (3) I, II and III (4) III only

12 Jan Evening

Q5

Noradrenaline is a/an:

- (1) Antacid (2) Neurotransmitter
 (3) Antidepressant (4) Antihistamine

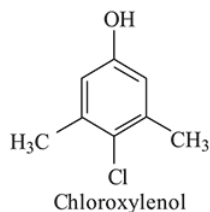
9 April Evening

JEE Mains 2019 Chapter wise Question Bank

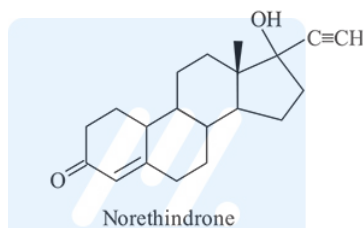
Chemistry in Everyday Life - Answers

Q1

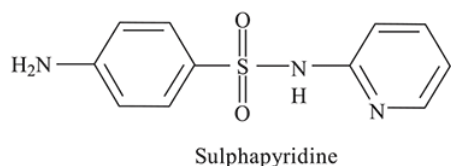
- (3) As chloroxylenol contains phenolic group so it gives positive ferric chloride test



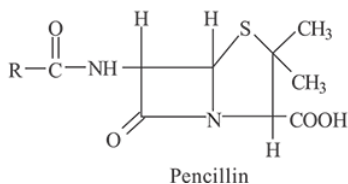
Norethindrone has double bond, thus it will give Bayer's test.



Sulphapyridine contains $-NH_2$ group so it gives carbilamine test.



Penicillin contains $-COOH$ group so it will give sodium hydrogen carbonate ($NaHCO_3$) test.



9 Jan Morning

Q2

(2)

- (A) Norethindrone – Antifertility (Q)
 (B) Ofloxacin – Antibiotics (P)
 (C) Equanil – used for hypertension (R)

11 Jan Morning

Q3

- (1) Allosteric → Molecule bind to a site other than the active site of enzyme
 Competitive inhibitor → Molecule bind to the active site of enzyme
 Receptor → Molecule crucial for communication in the body.
 Poison → Molecule binding to the enzyme covalently

11 Jan Evening

Q4

- (3) K^+ ions are the most abundant cations within cell fluids, where they activate many enzymes, participate in the oxidation of glucose to form ATP and, along with sodium ions, they are responsible for the transmission of nerve signals.

12 Jan Evening

Q5

- (2) Noradrenaline, also called Norepinephrine, is neurotransmitter.

9 April Evening